

| | | | |
|--|------------------------|---|-------------|
| WAAS CH 72619 W18A | APP CRS 183° | Rwy Idg TDZE 173 Apt Elev 173 | 5404 |
|--|------------------------|---|-------------|

RNAV (GPS) RWY 18

FLETCHER FIELD (CKM)

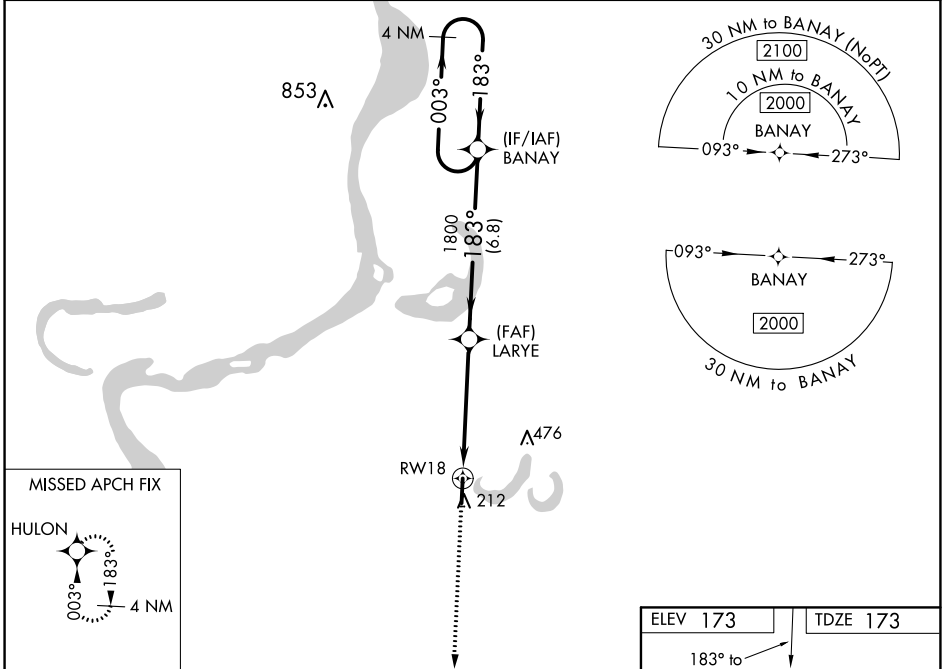
⚠ For uncompensated Baro-VNAV systems, LNAV/VNAV NA below -15°C (5°F) or above 54°C (130°F). Baro-VNAV and VDP NA when using Tunica altimeter setting. DME/DME RNP-0.3 NA. When local altimeter setting not received, use Tunica altimeter setting: increase LPV DA to 483 feet, LNAV/VNAV DA to 647 feet and all MDA 60 feet; increase LPV all Cats visibility 1/8 SM, LNAV/VNAV all Cats visibility 1/4 SM, and LNAV Cat C/D visibility 1/8 SM. Circling Rwy 36 NA at night.

MISSED APPROACH:
Climb to 2000 direct HULON and hold.

AWOS-3
120.675

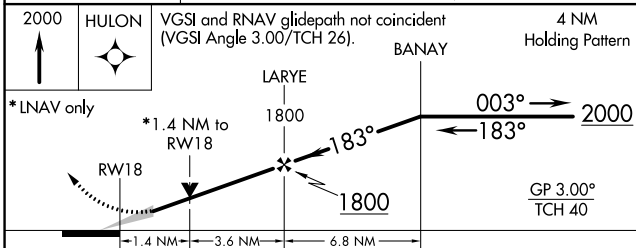
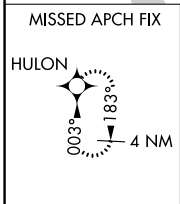
MEMPHIS CENTER
135.3 335.8

UNICOM
122.8 (CTAF) **0**

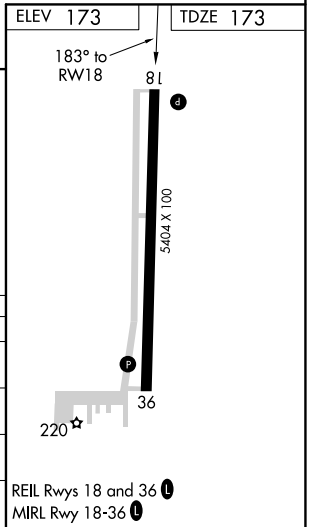


SC-4, 27 JAN 2022 to 24 FEB 2022

SC-4, 27 JAN 2022 to 24 FEB 2022



| CATEGORY | A | B | C | D |
|-------------------|-------|-------------|----------------|----------------|
| LPV DA | | 423-7/8 | 250 (300-7/8) | |
| LNAV/VNAV DA | | 587-13/8 | 414 (500-13/8) | |
| LNAV MDA | 640-1 | 467 (500-1) | 640-13/8 | 467 (500-13/8) |
| C CIRCLING | 740-1 | 567 (600-1) | 780-13/4 | 780-2 |
| | | | 607 (700-13/4) | 607 (700-2) |



REIL Rwys 18 and 36 **0**
MRL Rwy 18-36 **0**