

WAAS CH <b>40120</b> <b>W36A</b>	APP CRS <b>003°</b>	Rwy Idg TDZE <b>173</b> Apt Elev <b>173</b>	<b>5404</b>
--	------------------------	---	-------------

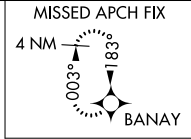
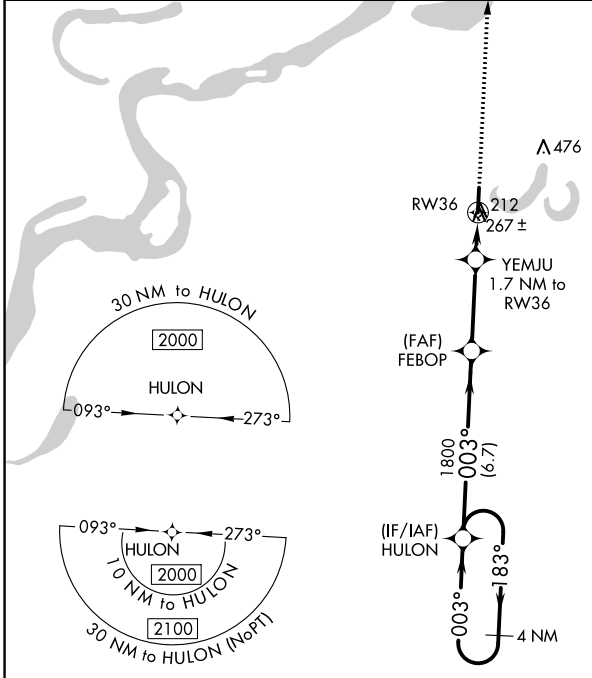
# RNAV (GPS) RWY 36

FLETCHER FIELD (CKM)

For uncompensated Baro-VNAV systems, LNAV/VNAV NA below -15°C (5°F) or above 54°C (130°F). DME/DME RNP-0.3 NA. When local altimeter setting not received, use Tunica altimeter setting; increase LPV DA to 537 feet, LNAV/VNAV DA to 508 feet and all MDA 60 feet; increase LPV all Cats visibility ¼ SM, LNAV/VNAV all Cats visibility ⅓ SM, and LNAV Cat C/D visibility ⅓ SM. Baro-VNAV NA with Tunica altimeter setting. Straight-in/Circling Rwy 36 NA at night. Rwy 36 helicopter visibility reduction below 1 SM NA.

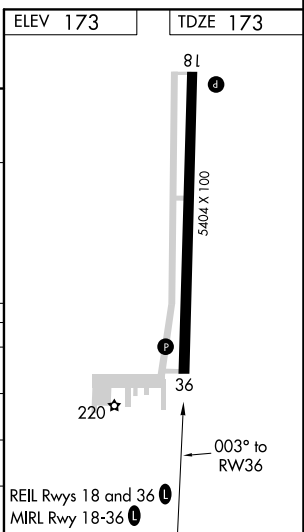
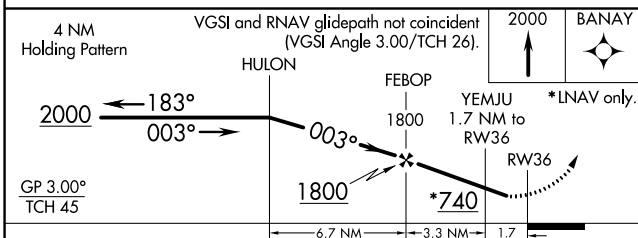
**MISSED APPROACH:**  
Climb to 2000 direct BANAY and hold.

AWOS-3 <b>120.675</b>	MEMPHIS CENTER <b>135.3 335.8</b>	UNICOM <b>122.8 (CTAF)</b>
--------------------------	--------------------------------------	-------------------------------



SC-4, 27 JAN 2022 to 24 FEB 2022

SC-4, 27 JAN 2022 to 24 FEB 2022



CATEGORY	A	B	C	D
LPV DA		477-1	304 (400-1)	
LNAV/VNAV DA		448-1	275 (300-1)	
LNAV MDA		520-1	347 (400-1)	
<b>C</b> CIRCLING	740-1 567 (600-1)		780-1¾ 607 (700-1¾)	780-2 607 (700-2)