

| | | |
|--|------------------------|---|
| LOC/DME I-RBW 110.15 Chan 38 (Y) | APP CRS 229° | Rwy Idg 6002 TDZE 101 Apt Elev 101 |
|--|------------------------|---|

ILS Y or LOC Y RWY 23

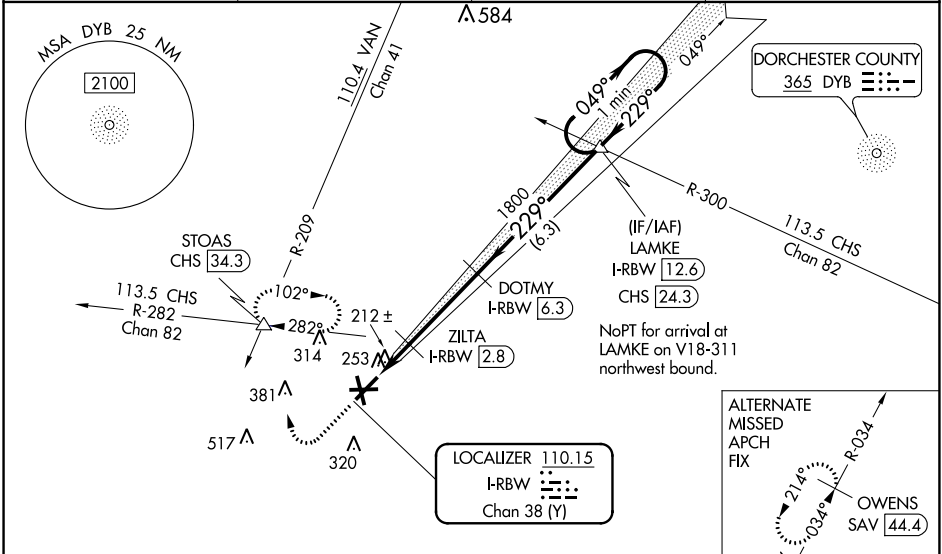
LOWCOUNTRY RGNL (R.B.W)

NA Inop table does not apply to S-LOC 23 Cat C. DME required. Helicopter visibility reduction below $\frac{3}{4}$ SM NA. VDP NA with Charleston AFB/Intl altimeter setting. When local altimeter setting not received, use Charleston AFB/Intl altimeter setting: increase S-ILS 23 DA to 379 feet and all MDA 80 feet; increase S-LOC 23 Cats C/D visibility $\frac{1}{8}$ mile and Circling Cat C visibility $\frac{1}{2}$ mile and Circling Cat D visibility $\frac{1}{4}$ mile. For inop ODALS when using Charleston AFB/Intl altimeter setting, increase S-ILS 23 all Cats visibility to $\frac{1}{8}$ mile and S-LOC 23 Cat D visibility to $\frac{1}{8}$ mile.

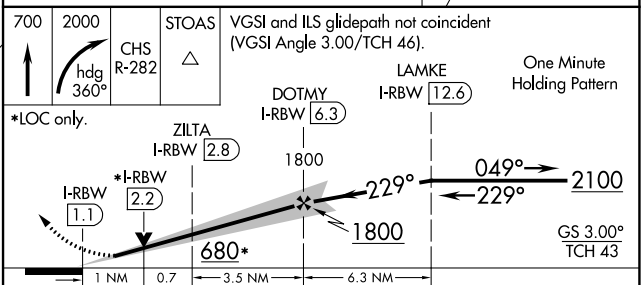
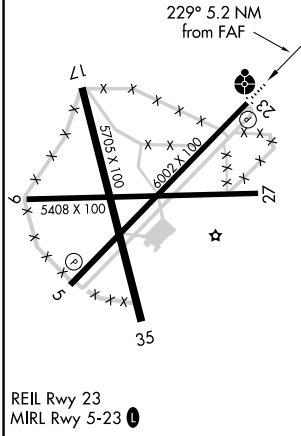


MISSED APPROACH: Climb to 700 then climbing right turn to 2000 on heading 360° and CHS VORTAC R-282 to STOAS/CHS VORTAC 34.3 DME and hold, continue climb-in-hold to 2000.

| | | | |
|--------------------------|--|-----------------------|--|
| AWOS-3 118.725 | CHARLESTON APP CON 120.7 306.925 | GCO 121.725 | UNICOM 122.8 (CTAF) 0 |
|--------------------------|--|-----------------------|--|



| | |
|-----------------|-----------------|
| ELEV 101 | TDZE 101 |
|-----------------|-----------------|



| CATEGORY | A | B | C | D |
|-------------------|--|----------------------|---|----------------------|
| S-ILS 23 | 301- $\frac{3}{4}$ 200 (200- $\frac{3}{4}$) | | | |
| S-LOC 23 | 480- $\frac{3}{4}$ 379 (400- $\frac{3}{4}$) | 480-1 379 (400-1) | | |
| C CIRCLING | 620-1 519 (600-1) | 640-1 539 (600-1) | 700-1 $\frac{1}{2}$ 599 (600-1 $\frac{1}{2}$) | 700-2 599 (600-2) |

SE-2, 27 JAN 2022 to 24 FEB 2022

SE-2, 27 JAN 2022 to 24 FEB 2022