


| | | |
|--|------------------------|---|
| LOC/DME I-RBW 110.15 Chan 38 (Y) | APP CRS 229° | Rwy Idg 6002 TDZE 101 Apt Elev 101 |
|--|------------------------|---|

ILS Z or LOC Z RWY 23

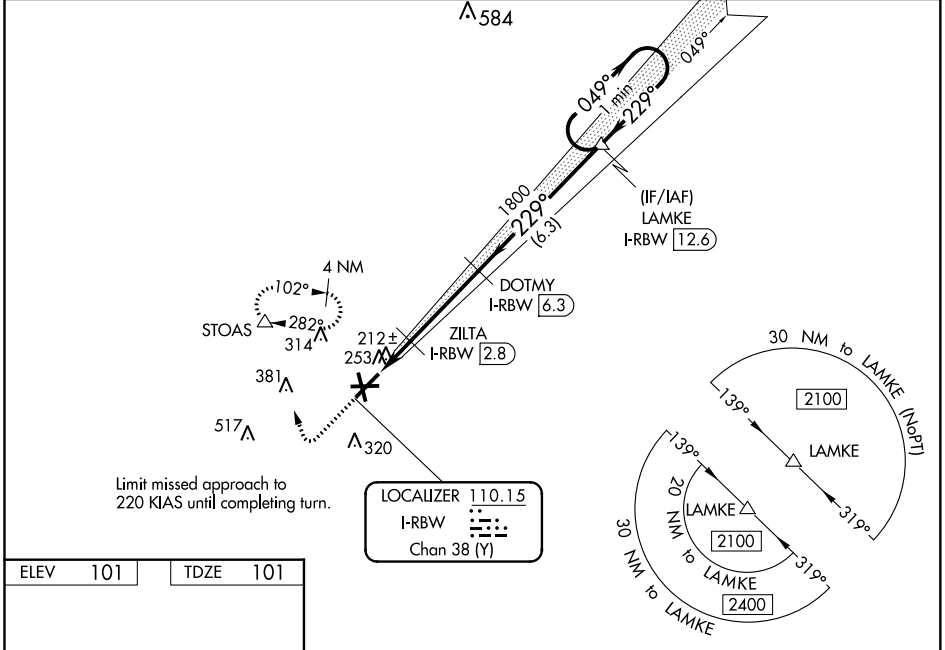
LOWCOUNTRY RGNL (R.B.W)

⚠ NA Inop table does not apply to S-LOC 23 Cat C. GPS and DME required. Helicopter visibility reduction below 3/4 SM NA. VDP NA with Charleston AFB/Intl altimeter setting. When local altimeter setting not received, use Charleston AFB/Intl altimeter setting: increase S-ILS 23 DA to 379 feet and all MDA 80 feet; increase S-LOC 23 Cats C/D visibility 1/8 mile and Circling Cat C visibility 1/2 mile and Circling Cat D visibility 1/4 mile. For inop ODALS when using Charleston AFB/Intl altimeter setting, increase S-ILS 23 all Cats visibility to 7/8 mile and S-LOC 23 Cat D visibility to 1 1/8 mile.

ODALS 

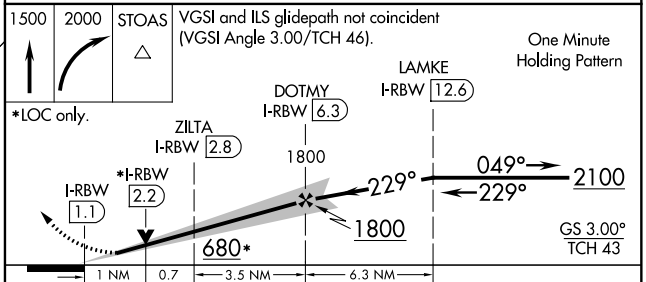
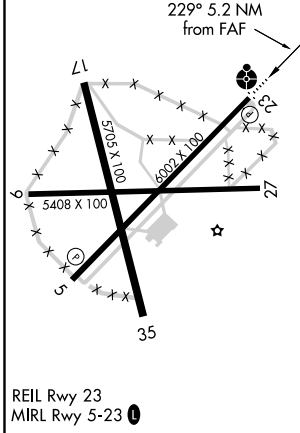
MISSED APPROACH: Climb to 1500 then climbing right turn to 2000 direct STOAS and hold.

| | | | |
|--------------------------|--|-----------------------|--|
| AWOS-3 118.725 | CHARLESTON APP CON 120.7 306.925 | GCO 121.725 | UNICOM 122.8 (CTAF) 0 |
|--------------------------|--|-----------------------|--|



SE-2, 27 JAN 2022 to 24 FEB 2022

SE-2, 27 JAN 2022 to 24 FEB 2022



| | | | | |
|-------------------|-----------------------|----------------------|------------------------------|----------------------|
| CATEGORY | A | B | C | D |
| S-ILS 23 | 301-3/4 200 (200-3/4) | | | |
| S-LOC 23 | 480-3/4 379 (400-3/4) | 480-1 379 (400-1) | | |
| C CIRCLING | 620-1 519 (600-1) | 640-1 539 (600-1) | 700-1 1/2 599 (600-1 1/2) | 700-2 599 (600-2) |