

WAAS CH <b>93616</b> <b>W17A</b>	APP CRS <b>171°</b>	Rwy Idg TDZE Apt Elev	<b>5705</b> <b>93</b> <b>101</b>
--	------------------------	-----------------------------	--

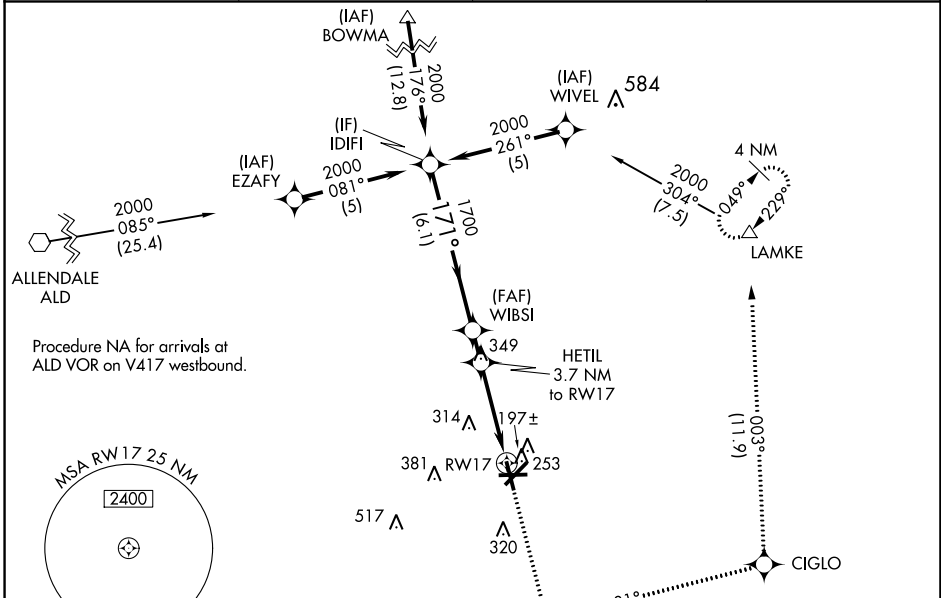
# RNAV (GPS) RWY 17

LOWCOUNTRY RGNL (R.B.W)

**⚠** For uncompensated Baro-VNAV systems, LNAV/VNAV NA below -15°C (5°F) or above 54°C (130°F). Baro-VNAV and VDP NA when using Charleston Intl/AFB altimeter setting. DME/DME RNP-0.3 NA. When local altimeter setting not received, use Charleston AFB/Intl altimeter setting: increase LPV DA to 421 feet and LNAV/VNAV DA to 587 feet and all MDA 80 feet; increase LPV visibility all Cats 1/8 mile; increase LNAV/VNAV visibility all Cats, LNAV Cats C/D, and Circling Cat D visibility 1/4 mile; increase Circling Cat C visibility 1/2 mile.

**MISSED APPROACH:**  
Climb to 2100 direct LATNY and on track 081° to CIGLO and track 003° to LAMKE and hold.

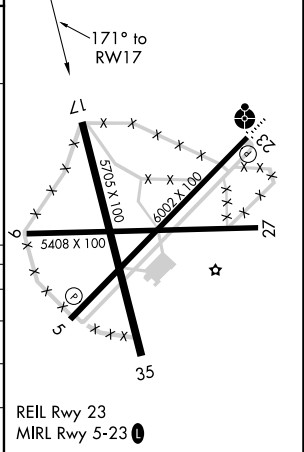
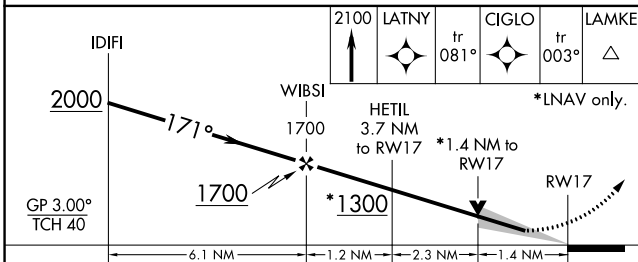
AWOS-3 <b>118.725</b>	CHARLESTON APP CON <b>120.7 306.925</b>	GCO <b>121.725</b>	UNICOM <b>122.8 (CTAF) 0</b>
--------------------------	--	-----------------------	---------------------------------



SE-2, 27 JAN 2022 to 24 FEB 2022

SE-2, 27 JAN 2022 to 24 FEB 2022

ELEV	101	TDZE	93
------	-----	------	----



CATEGORY	A	B	C	D
LPV DA		343-1	250 (300-1)	
LNAV/VNAV DA		508-1½	415 (500-1½)	
LNAV MDA	580-1	487 (500-1)	580-1¾	487 (500-1¾)
<b>C</b> CIRCLING	620-1 519 (600-1)	640-1 539 (600-1)	700-1½ 599 (600-1½)	700-2 599 (600-2)

REIL Rwy 23  
MIRL Rwy 5-23 **0**