

WAAS CH <b>45639</b> <b>W01A</b>	APP CRS <b>007°</b>	Rwy Idg TDZE Apt Elev	<b>4902</b> <b>1571</b> <b>1600</b>
--	------------------------	-----------------------------	---

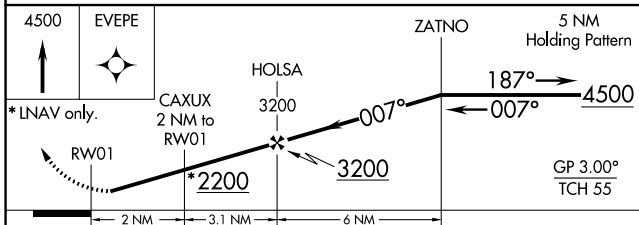
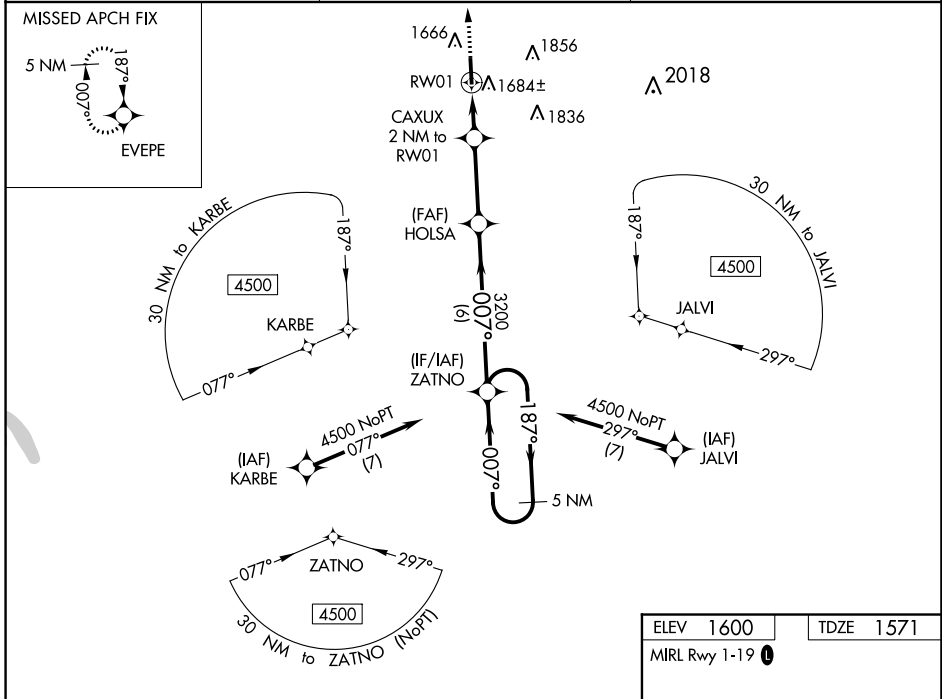
# RNAV (GPS) RWY 1

TITUSVILLE (6G1)

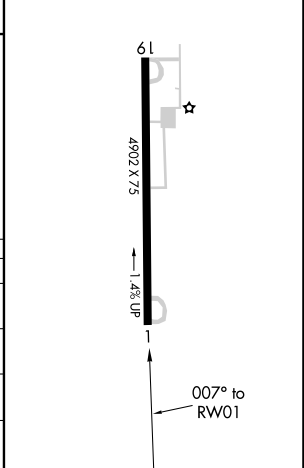
**NA** Baro-VNAV NA. DME/DME RNP-0.3 NA. Helicopter visibility reduction below 1 SM NA. Night landing: Rwy 1 NA. Use Franklin altimeter setting. When not received, use Port Meade altimeter setting and increase LPV DA to 1899, LNAV/VNAV DA to 1961 and all MDA 40 feet; increase LPV and LNAV/VNAV all Cats visibility 1/8 mile, increase LNAV Cats C/D and Circling Cat C visibility 1/4 mile.

**MISSED APPROACH:** Climb to 4500 direct EVEPE and hold, continue climb-in-hold to 4500.

FKL AWOS-3PT <b>118.175</b>	YOUNGSTOWN APP CON * <b>133.95 322.3</b>	CTAF <b>122.9 0</b>
--------------------------------	---	------------------------



ELEV 1600	TDZE 1571
MIRL Rwy 1-19 0	



CATEGORY	A	B	C	D
LPV DA	1864-1		293 (300-1)	
LNAV/VNAV DA	1926-1¼		355 (400-1¼)	
LNAV MDA	1980-1	409 (400-1)	1980-1½	409 (400-1½)
<b>C</b> CIRCLING	2100-1	500 (500-1)	2200-1½ 600 (600-1½)	2280-2¼ 680 (700-2¼)

NE-4, 27 JAN 2022 to 24 FEB 2022

NE-4, 27 JAN 2022 to 24 FEB 2022