

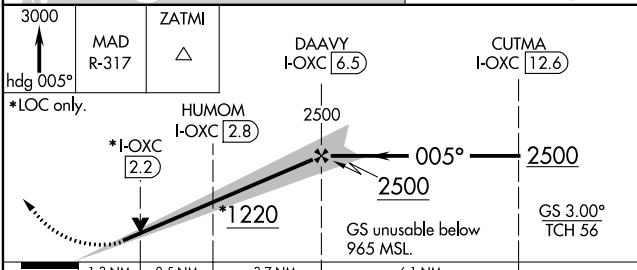
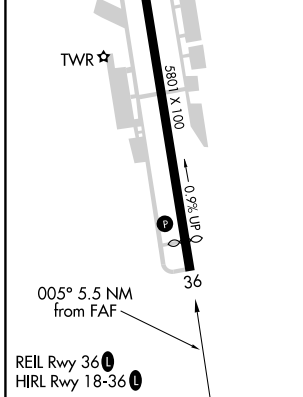
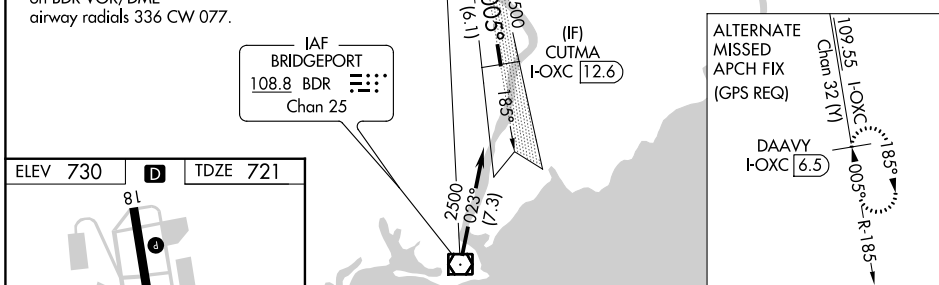
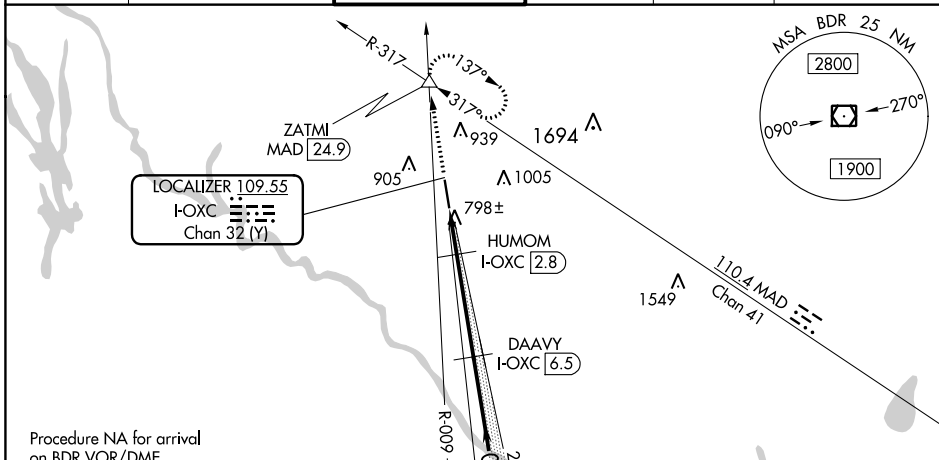
LOC/DME I-OCX 109.55 Chan 32 (Y)	APP CRS 005°	Rwy Idg 5301 TDZE 721 Apt Elev 730
--	------------------------	---

ILS or LOC RWY 36

WATERBURY-OXFORD (OXC)

DME required.		MISSED APPROACH: Climb to 3000 on heading 005° and MAD VOR/DME R-317 to ZATMI INT/MAD 24.9 DME and hold. Continue climb-in-hold to 3000.			
NA	Rwy 36 helicopter visibility reduction below 3/4 SM NA.				

ATIS 132.975	NEW YORK APP CON 124.075 343.65	OXFORD TOWER ★ 118.475 (CTAF) 1	GND CON 121.65	CLNC DEL 121.65	UNICOM 122.95
------------------------	---	--	--------------------------	---------------------------	-------------------------



CATEGORY	A	B	C	D
S-ILS 36	971-3/4 250 (300-3/4)			
S-LOC 36	1140-1	419 (500-1)	1140-1 1/8	419 (500-1 1/8)
C CIRCLING	1300-1	570 (600-1)	1380-1 3/4 650 (700-1 3/4)	1460-2 1/4 730 (800-2 1/4)

NE-1, 27 JAN 2022 to 24 FEB 2022

NE-1, 27 JAN 2022 to 24 FEB 2022