

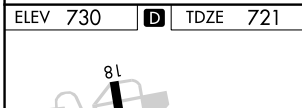
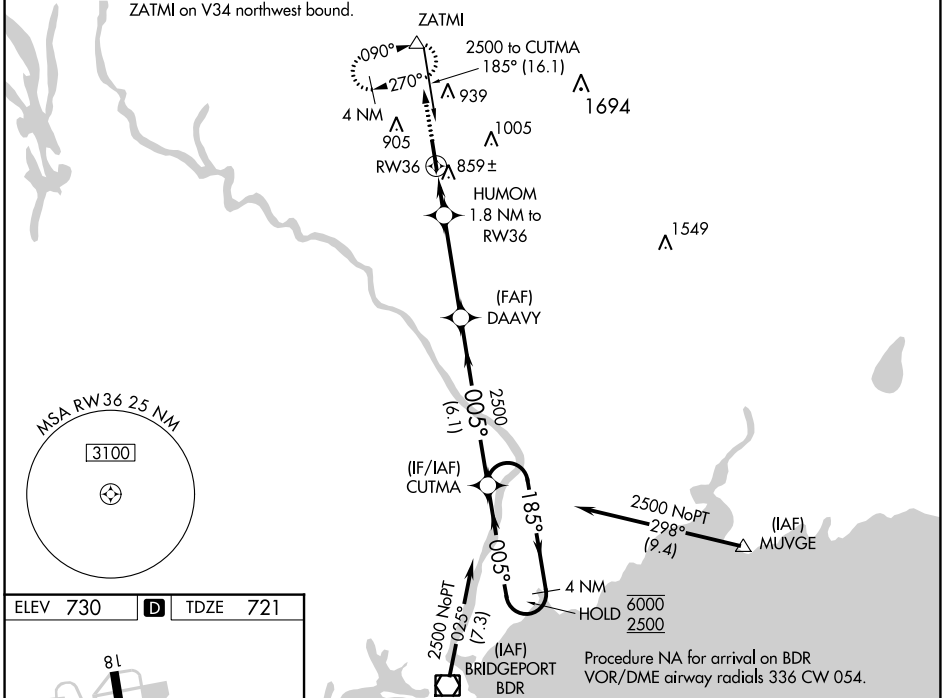
WAAS CH 72922 W36A	APP CRS 005°	Rwy Idg 5301 TDZE 721 Apt Elev 730
--	------------------------	---

RNAV (GPS) RWY 36

WATERBURY-OXFORD (OXC)

RNP APCH.		MISSED APPROACH: Climb to 3000 direct ZATMI and hold, continue climb-in-hold to 3000.			
<p>▼ Rwy 36 helicopter visibility reduction below 3/4 SM NA.</p> <p>▲ For uncompensated Baro-VNAV systems, LNAV/VNAV NA below -16°C or above 54°C.</p>					
ATIS 132.975	NEW YORK APP CON 124.075 343.65	OXFORD TOWER * 118.475 (CTAF) 0	GND CON 121.65	CLNC DEL 121.65	UNICOM 122.95

Procedure NA for arrivals at ZATMI on V34 northwest bound.



3000	ZATMI	*LNAV only			
	HUMOM 1.8 NM to RW36	DAAVY 2500	CUTMA	4 NM Holding Pattern	
	*1.2 NM to RW36	*1300	2500	185° → 6000	← 005° 2500
	RW36			GP 3.00° TCH 56	
	1.2	0.6 NM	3.7 NM	6.1 NM	
CATEGORY	A	B	C	D	
LPV DA	971-3/4		250 (300-3/4)		
LNAV/VNAV DA	1097-1		376 (400-1)		
LNAV MDA	1120-1 399 (400-1)		1120-1 1/8 399 (400-1 1/8)		
CIRCLING	1300-1 570 (600-1)		1380-1 3/4 650 (700-1 1/4)		1460-2 1/4 730 (800-2 1/4)

NE-1, 27 JAN 2022 to 24 FEB 2022

NE-1, 27 JAN 2022 to 24 FEB 2022