

WAAS CH <b>69538</b> <b>W01A</b>	APP CRS <b>011°</b>	Rwy Idg TDZE Apt Elev	<b>4802</b> <b>358</b> <b>358</b>
--	------------------------	-----------------------------	---

# RNAV (GPS) RWY 1

GIBSON COUNTY (TGC)

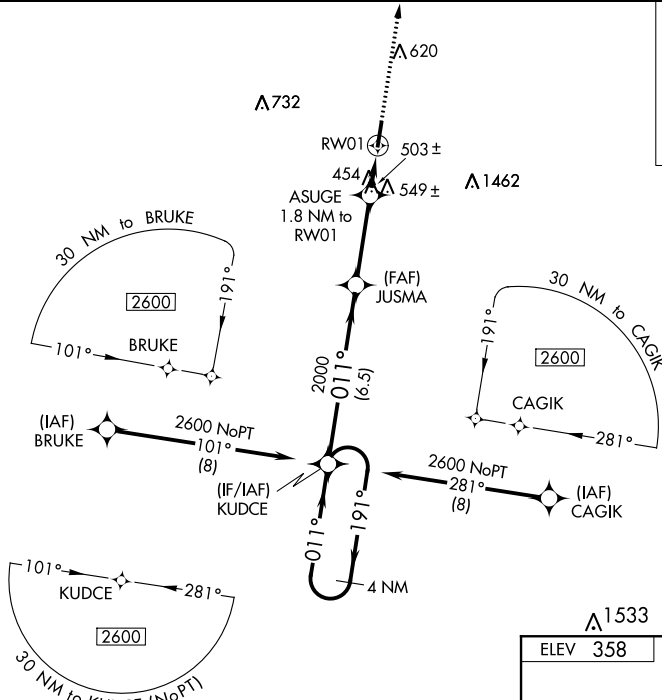
**⚠** Night landing: Rwy 19 NA. DME/DME RNP-0.3 NA. Helicopter visibility reduction below 3/4 SM NA. Obtain local altimeter setting on CTAF; when not received use McKellar-Sipes Rgnl altimeter setting and increase all MDA 60 feet, increase Circling Cat C visibility 1/4 mile.

**MISSED APPROACH:** Climb to 2600 direct PUYTI and hold.

MEMPHIS CENTER  
**134.65 316.15**

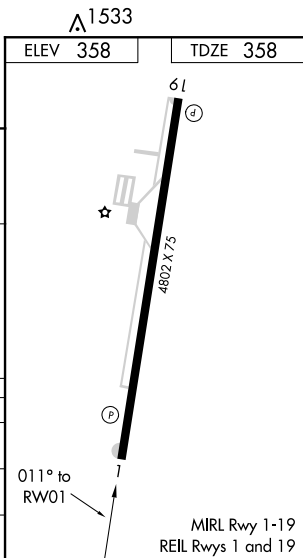
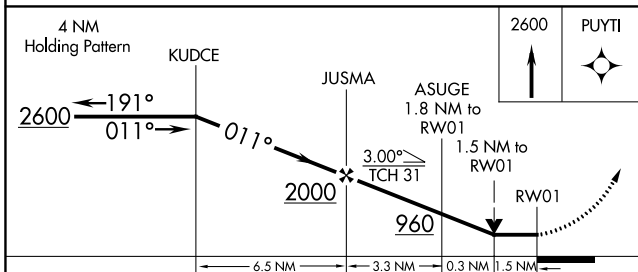
UNICOM  
**122.8 (CTAF)**

MISSED APCH FIX



SE-1, 27 JAN 2022 to 24 FEB 2022

SE-1, 27 JAN 2022 to 24 FEB 2022



CATEGORY	A	B	C	D
LP MDA	720-1 362 (400-1)			
LNAV MDA	800-1 442 (500-1)	800-1 3/4 442 (500-1 3/4)		
<b>C</b> CIRCLING	980-1 622 (700-1)	980-1 3/4 622 (700-1 3/4)	1780-3 1422 (1500-3)	