

WAAS CH <b>72938</b> <b>W19A</b>	APP CRS <b>191°</b>	Rwy Idg TDZE Apt Elev	<b>4802</b> <b>356</b> <b>358</b>
--	------------------------	-----------------------------	---

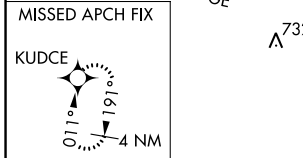
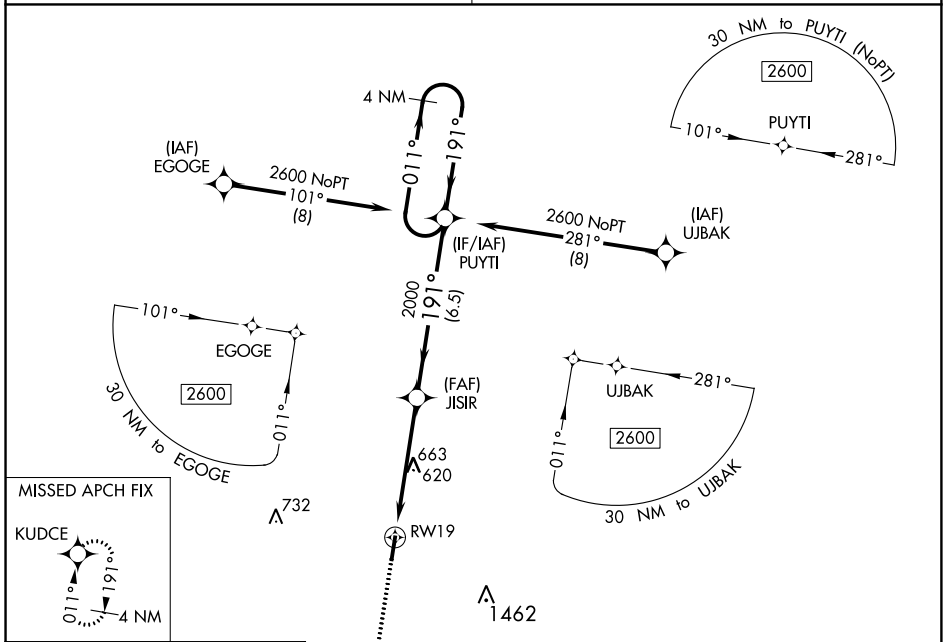
# RNAV (GPS) RWY 19

GIBSON COUNTY (TGC)

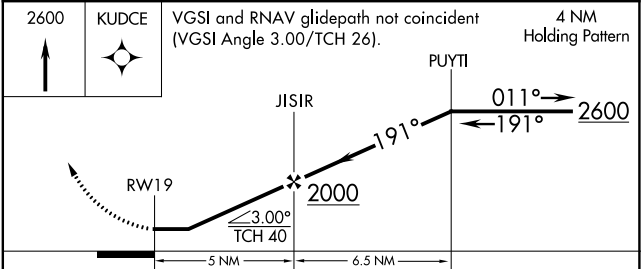
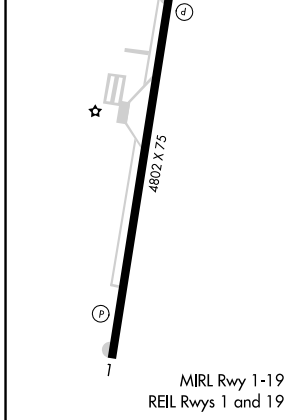
**⚠** Night landing: Rwy 19 NA. DME/DME RNP-0.3 NA. Helicopter visibility reduction below 1 SM NA. Obtain local altimeter setting on CTAF; when not received use McKellar-Sipes Rgnl altimeter setting and increase all MDA 60 feet, increase Circling Cat C visibility ¼ mile.

**MISSED APPROACH:** Climb to 2600 direct KUDCE and hold.

MEMPHIS CENTER <b>134.65 316.15</b>	UNICOM <b>122.8 (CTAF)</b>
--	-------------------------------



ELEV 358	TDZE 356
----------	----------



CATEGORY	A	B	C	D
LP MDA	920-1	564 (600-1)	920-1 <sup>5</sup> / <sub>8</sub>	564 (600-1 <sup>5</sup> / <sub>8</sub> )
LNAV MDA	940-1	584 (600-1)	940-1 <sup>3</sup> / <sub>4</sub>	584 (600-1 <sup>3</sup> / <sub>4</sub> )
<b>C</b> CIRCLING	980-1	622 (700-1)	980-1 <sup>3</sup> / <sub>4</sub> 622 (700-1 <sup>3</sup> / <sub>4</sub> )	1780-3 1422 (1500-3)

SE-1, 27 JAN 2022 to 24 FEB 2022

SE-1, 27 JAN 2022 to 24 FEB 2022