

WAAS CH <b>40138</b> <b>W22A</b>	APP CRS <b>226°</b>	Rwy Idg TDZE Apt Elev	<b>4003</b> <b>421</b> <b>421</b>
--	------------------------	-----------------------------	---

# RNAV (GPS) RWY 22

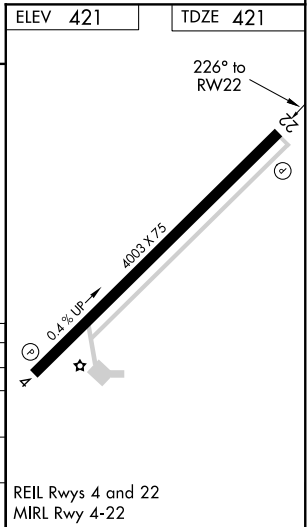
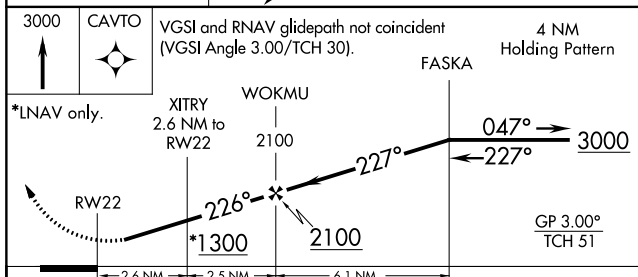
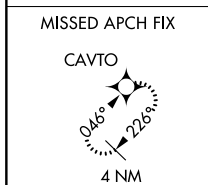
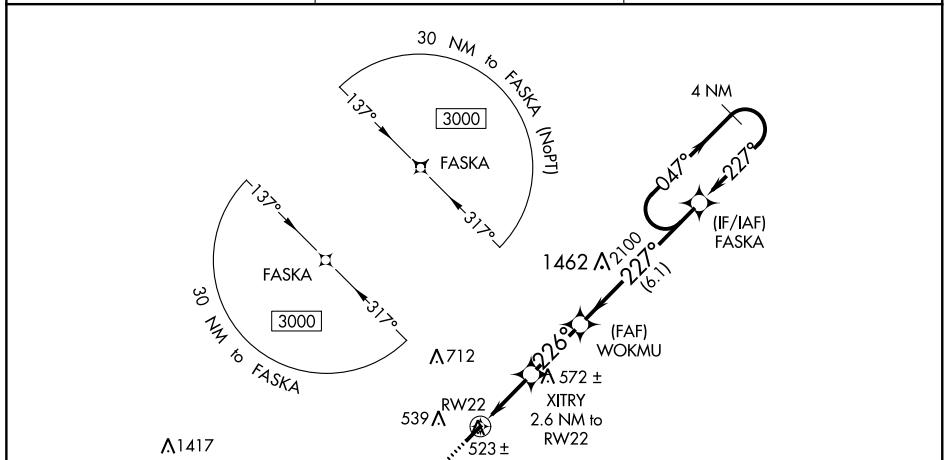
HUMBOLDT MUNI (M53)

▼  
▲ NA

Baro-VNAV NA. DME/DME RNP-0.3 NA. Procedure NA at night. Helicopter visibility reduction below 1 SM NA. Use Jackson altimeter setting, when not received, use Dyersburg altimeter setting: increase LPV all Cats DA to 749 and all Cats visibility 1/8 mile; increase LNAV/VNAV all Cats DA to 817 and all Cats visibility 1/8 mile; increase all MDA 60 feet and LNAV Cats C/D and Circling Cats C/D visibility 1/4 mile.

MISSED APPROACH: Climb to 3000 direct CAVTO and hold.

MKL ASOS <b>119.325</b>	MEMPHIS CENTER <b>134.65 316.15</b>	UNICOM <b>122.8 (CTAF)</b>
----------------------------	--	-------------------------------



CATEGORY	A	B	C	D
LPV DA		701-1	280 (300-1)	
LNAV/VNAV DA		770-1 1/8	349 (400-1 1/8)	
LNAV MDA	820-1	399 (400-1)	820-1 1/8	399 (400-1 1/8)
Ⓢ CIRCLING	900-1 479 (500-1)	920-1 499 (500-1)	1120-2 699 (700-2)	1120-2 1/4 699 (700-2 1/4)

REIL Rwy 4 and 22  
MIRL Rwy 4-22

SE-1, 27 JAN 2022 to 24 FEB 2022

SE-1, 27 JAN 2022 to 24 FEB 2022