

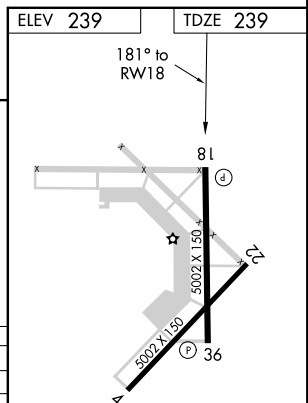
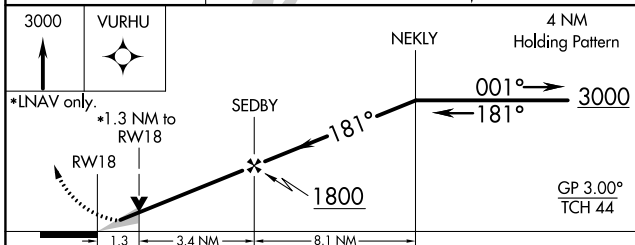
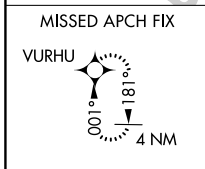
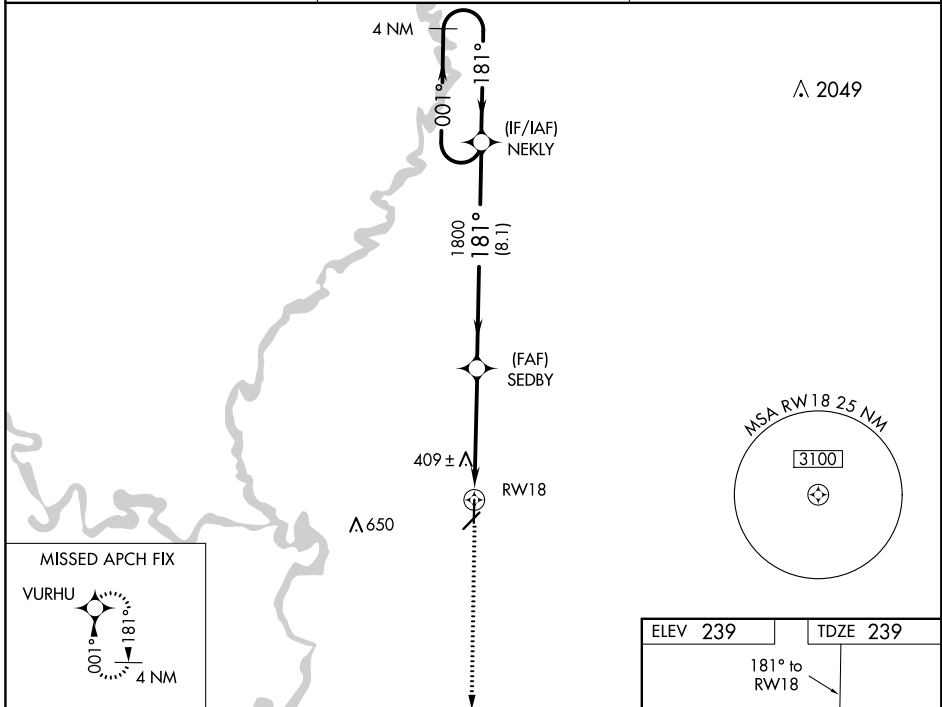
WAAS CH 66008 W18A	APP CRS 181°	Rwy Idg TDZE Apt Elev	5002 239 239
--	------------------------	-----------------------------	---

RNAV (GPS) RWY 18

NEWPORT RGNL (M19)

RNP APCH-GPS. ⚠ When local altimeter setting not received, use Batesville altimeter setting: increase LPV DA to 575 feet and all visibilities ½ SM; increase LNAV/VNAV DA to 845 feet and all visibilities ½ SM; increase all MDAs 100 feet and visibility Cats C ¼ SM and D ½ SM. VDP NA when using Batesville altimeter setting. For uncompensated Baro-VNAV systems, LNAV/VNAV NA below -15°C or above 54°C. Baro-VNAV NA when using Batesville altimeter setting.	MISSED APPROACH: Climb to 3000 direct VURHU and hold.
--	---

AWOS-3PT 118.15	MEMPHIS CENTER 120.075 289.4	UNICOM 122.8 (CTAF) 0
---------------------------	--	---------------------------------



CATEGORY	A	B	C	D
LPV DA		489-3¼	250 (300-¾)	
LNAV/VNAV DA		759-1¾	520 (600-1¾)	
LNAV MDA	700-1	461 (500-1)	700-1¼ 461 (500-1¼)	700-1½ 461 (500-1½)
CIRCLING	760-1	521 (600-1)	760-1½ 521 (600-1½)	900-2 661 (700-2)

REIL Rwy 18 and 36
MIRL Rwy 18-36 0

SC-1, 27 JAN 2022 to 24 FEB 2022

SC-1, 27 JAN 2022 to 24 FEB 2022