

| | | | |
|--|------------------------|---|-------------|
| WAAS CH 70708 W36A | APP CRS 001° | Rwy Idg TDZE 239 Apt Elev 239 | 5002 |
|--|------------------------|---|-------------|

RNAV (GPS) RWY 36

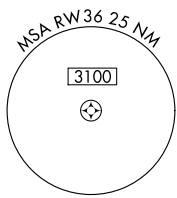
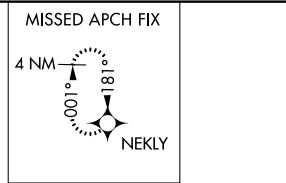
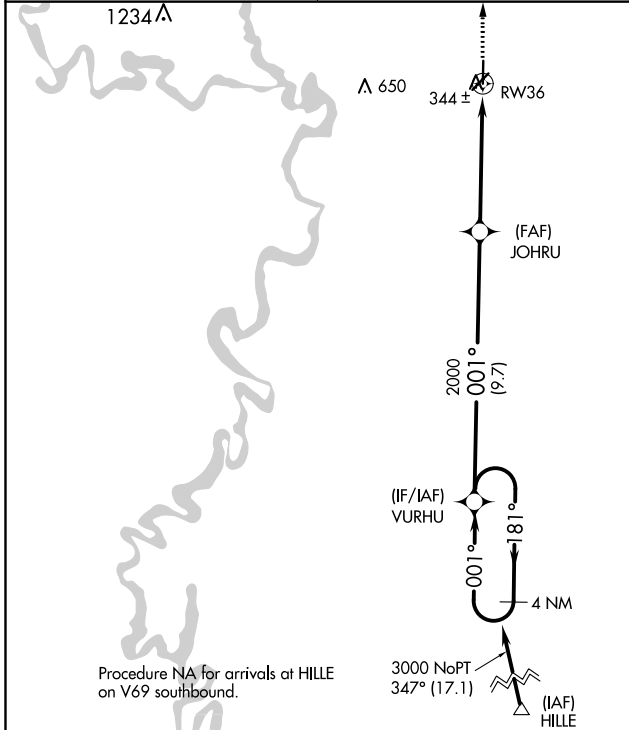
NEWPORT RGNL (M19)

RNP APCH-GPS.

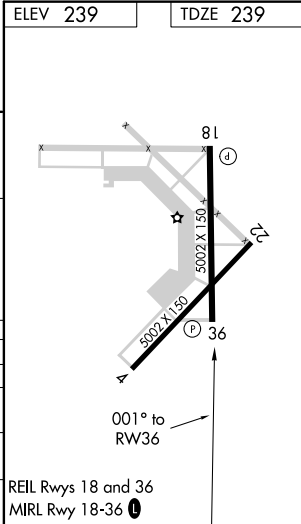
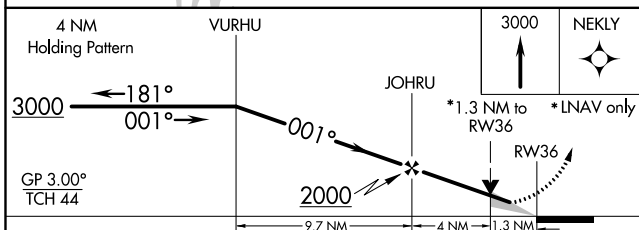
⚠ Baro-VNAV NA when using Batesville altimeter setting. For uncompensated Baro-VNAV systems, LNAV/VNAV NA below -15°C or above 54°C. When local altimeter setting not received, use Batesville altimeter setting; increase LPV DA to 575 feet and all visibilities ½ SM; increase LNAV/VNAV DA to 700 feet and all visibilities ½ SM; increase all MDAs 100 feet and visibility Cats C ¼ SM and D ½ SM. VDP NA when using Batesville altimeter setting.

MISSED APPROACH: Climb to 3000 direct NEKLY and hold.

| | | |
|---------------------------|--|---------------------------------|
| AWOS-3PT 118.15 | MEMPHIS CENTER 120.075 289.4 | UNICOM 122.8 (CTAF) 0 |
|---------------------------|--|---------------------------------|



| | |
|----------|----------|
| ELEV 239 | TDZE 239 |
|----------|----------|



| CATEGORY | A | B | C | D |
|--------------|-------|-------------|------------------------|------------------------|
| LPV DA | | 489-¾ | 250 (300-¾) | |
| LNAV/VNAV DA | | 614-1¼ | 375 (400-1¼) | |
| LNAV MDA | 700-1 | 461 (500-1) | 700-1¼ 461 (500-1¼) | 700-1½ 461 (500-1½) |
| CIRCLING | 760-1 | 521 (600-1) | 760-1½ 521 (600-1½) | 900-2 661 (700-2) |

REIL Rwy 18 and 36
MRL Rwy 18-36 0

SC-1, 27 JAN 2022 to 24 FEB 2022

SC-1, 27 JAN 2022 to 24 FEB 2022