

VORTAC RBV 113.8 Chan 85	APP CRS 236°	Rwy Idg 3881 TDZE 53 Apt Elev 53
----------------------------------------------	------------------------	-------------------------------------------------------------

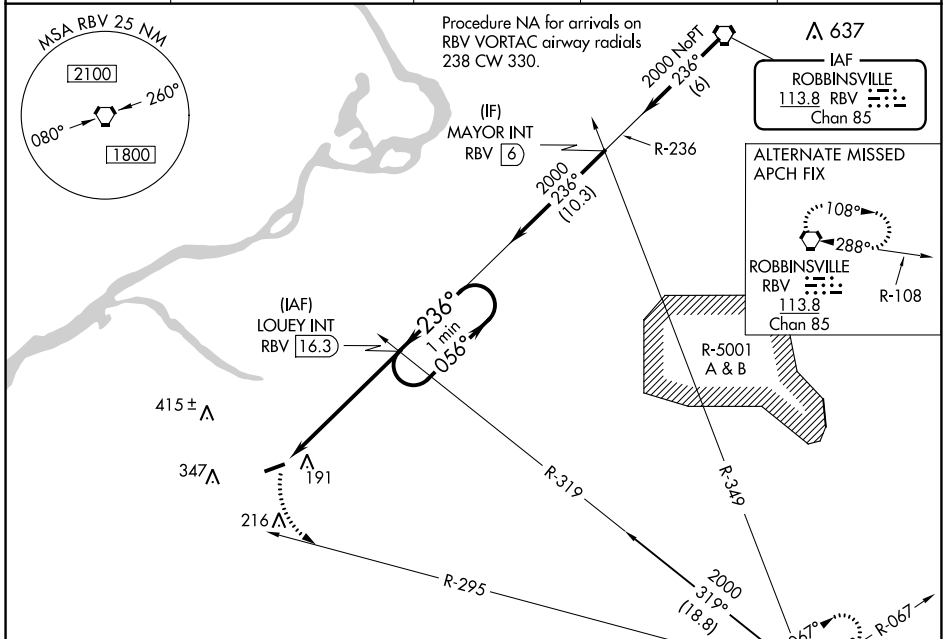
VOR RWY 26

SOUTH JERSEY RGNL (VAY)

⚠ When local altimeter setting not received, use Northeast Philadelphia altimeter setting and increase all MDA 40 feet. Procedure NA at night. Helicopter visibility reduction below 1 SM NA.

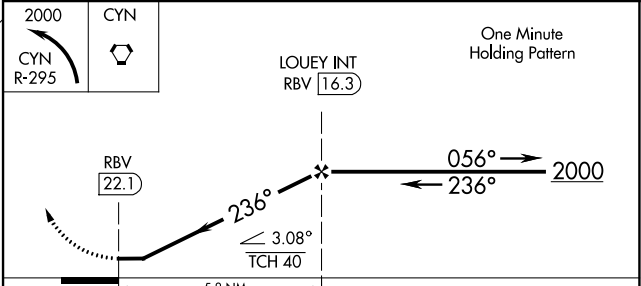
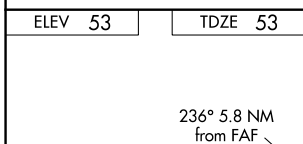
MISSED APPROACH: Climbing left turn to 2000 on CYN VORTAC R-295 to CYN VORTAC and hold.

ASOS 119.325	MC GUIRE APP CON 126.475 363.8	GCO 121.725	UNICOM 122.8 (CTAF)	123.3 0
------------------------	------------------------------------------	-----------------------	-------------------------------	-----------------------



NE-2, 27 JAN 2022 to 24 FEB 2022

NE-2, 27 JAN 2022 to 24 FEB 2022



MIRL Rwy 8-26 **0**

REIL Rwys 8 and 26 **0**

FAF to MAP 5.8 NM					
Knots	60	90	120	150	180
Min:Sec	5:48	3:52	2:54	2:19	1:56

CATEGORY	A	B	C	D
S-26	640-1	587 (600-1)	NA	
CIRCLING	640-1	640-1 ¼	NA	
	587 (600-1)	587 (600-1 ¼)		