

APP CRS	Rwy Idg	4002
240°	TDZE	632
	Apt Elev	632

RNAV (GPS) RWY 24

HEBER SPRINGS MUNI (HBZ)

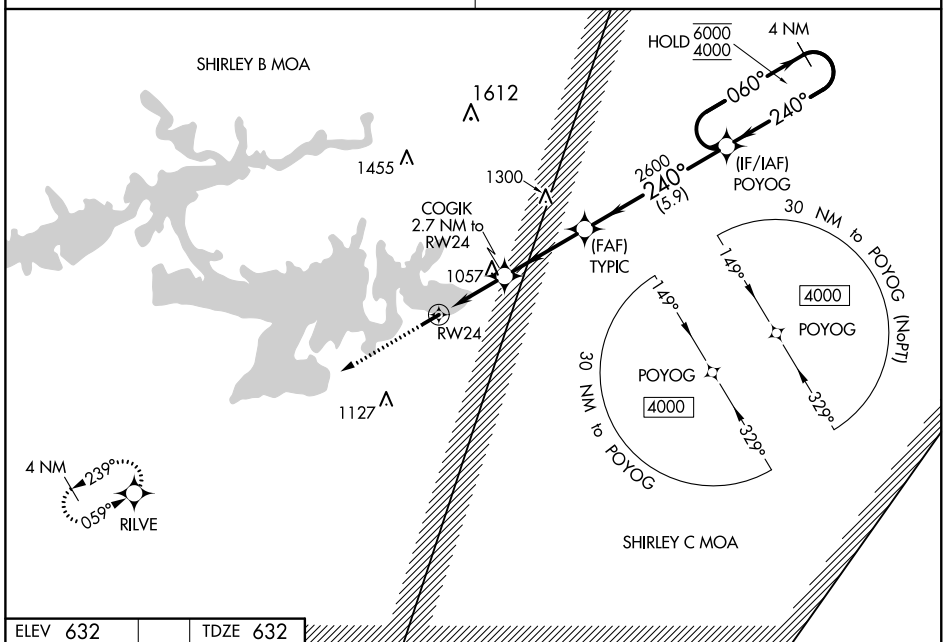
RNP APCH.

Procedure NA at night. Rwy 24 helicopter visibility reduction below 1 SM NA. Obtain local altimeter setting on CTAF; when not received, use Batesville altimeter setting and increase all MDAs 80 feet, and increase LNAV visibility Cat B ¼ SM, Cat C and D ½ SM. Increase Circling visibility Cat B, C ¼ SM, and Cat D ½ SM.

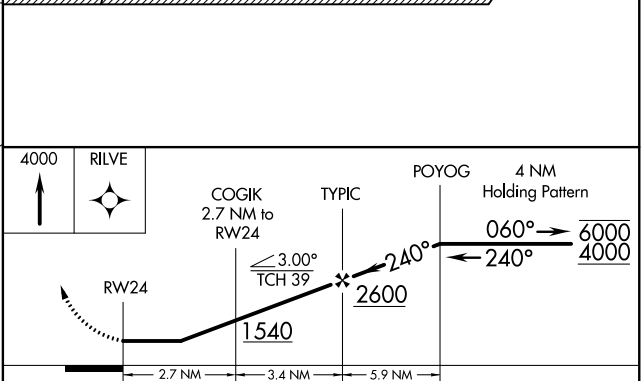
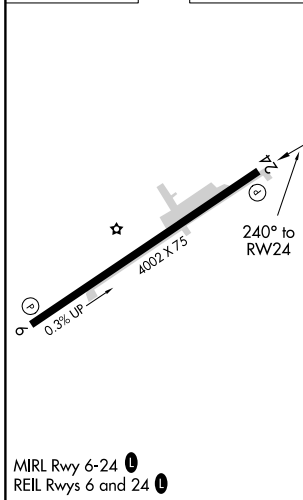
MISSED APPROACH: Climb to 4000 direct RILVE and hold, continue climb-in-hold to 4000.

MEMPHIS CENTER
126.85 281.55

UNICOM
122.7 (CTAF)



ELEV 632	TDZE 632
----------	----------



CATEGORY	A	B	C	D
LNAV MDA	1320-1	688 (700-1)	1320-2	688 (700-2)
C CIRCLING	1320-1 688 (700-1)	1380-1 748 (800-1)	1380-2 ¼ 748 (800-2 ¼)	1440-2 ½ 808 (900-2 ½)

SC-1, 27 JAN 2022 to 24 FEB 2022

SC-1, 27 JAN 2022 to 24 FEB 2022