

APP CRS	Rwy Idg	<b>4002</b>
<b>060°</b>	TDZE	<b>631</b>
	Apt Elev	<b>632</b>

# RNAV (GPS) RWY 6

HEBER SPRINGS MUNI (HBZ)

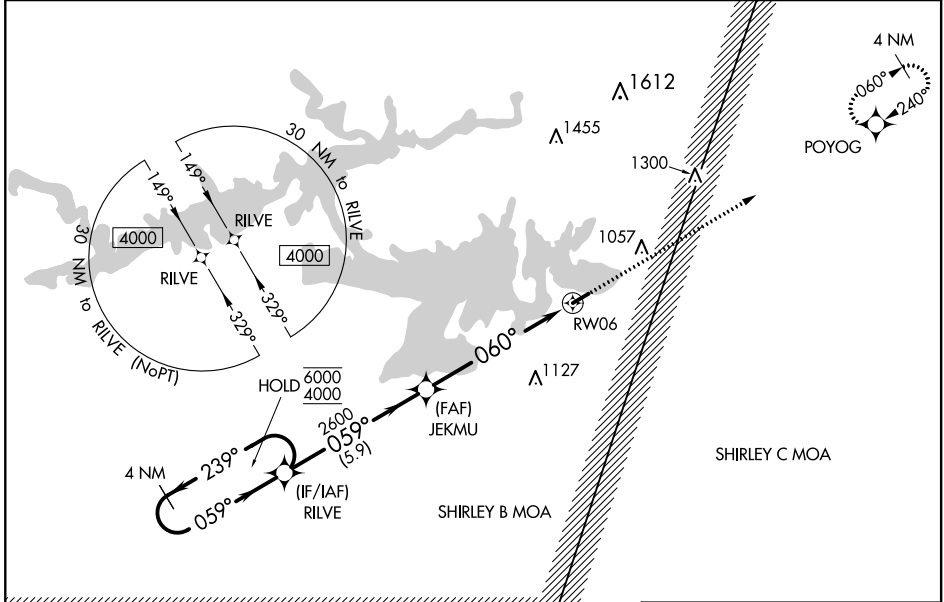
RNP APCH.

**NA** Procedure NA at night. Rwy 6 helicopter visibility reduction below 1 SM NA. Obtain local altimeter setting on CTAF; when not received, use Batesville altimeter setting and increase all MDAs 80 feet, and increase LNAV visibility Cat C and D ¼ SM. Increase Circling visibility Cat C ¼ SM, Cat D ½ SM.

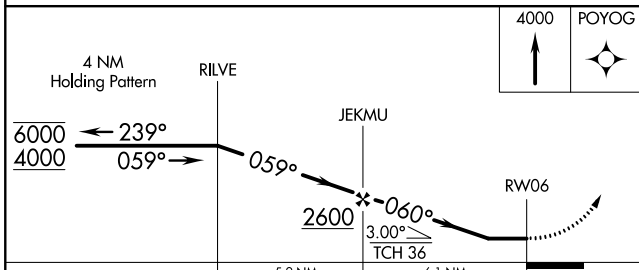
MISSED APPROACH: Climb to 4000 direct POYOG and hold, continue climb-in hold 4000.

MEMPHIS CENTER **126.85 281.55**

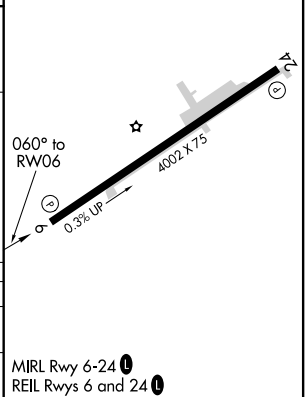
UNICOM **122.7 (CTAF) 0**



ELEV 632	TDZE 631
----------	----------



CATEGORY	A	B	C	D
LNAV MDA	1240-1	609 (700-1)	1240-1¾	609 (700-1¾)
<b>C</b> CIRCLING	1240-1 608 (700-1)	1380-1 748 (800-1)	1380-2¼ 748 (800-2¼)	1440-2½ 808 (900-2½)



SC-1, 27 JAN 2022 to 24 FEB 2022

SC-1, 27 JAN 2022 to 24 FEB 2022