

WAAS CH <b>93818</b> <b>W17A</b>	APP CRS <b>174°</b>	Rwy ldg TDZE Apt Elev	<b>5000</b> <b>657</b> <b>657</b>
--	------------------------	-----------------------------	---

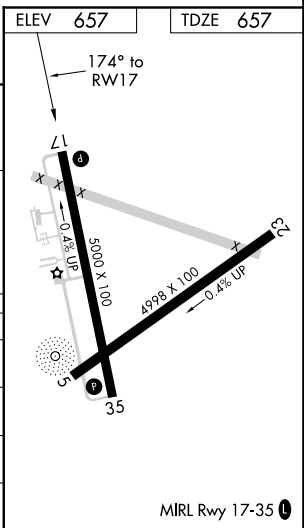
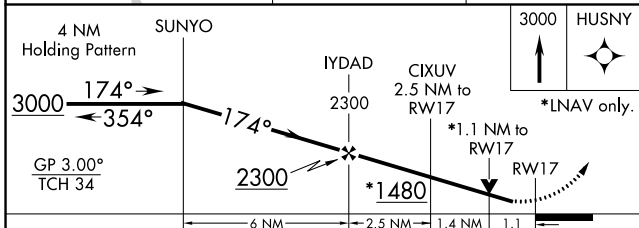
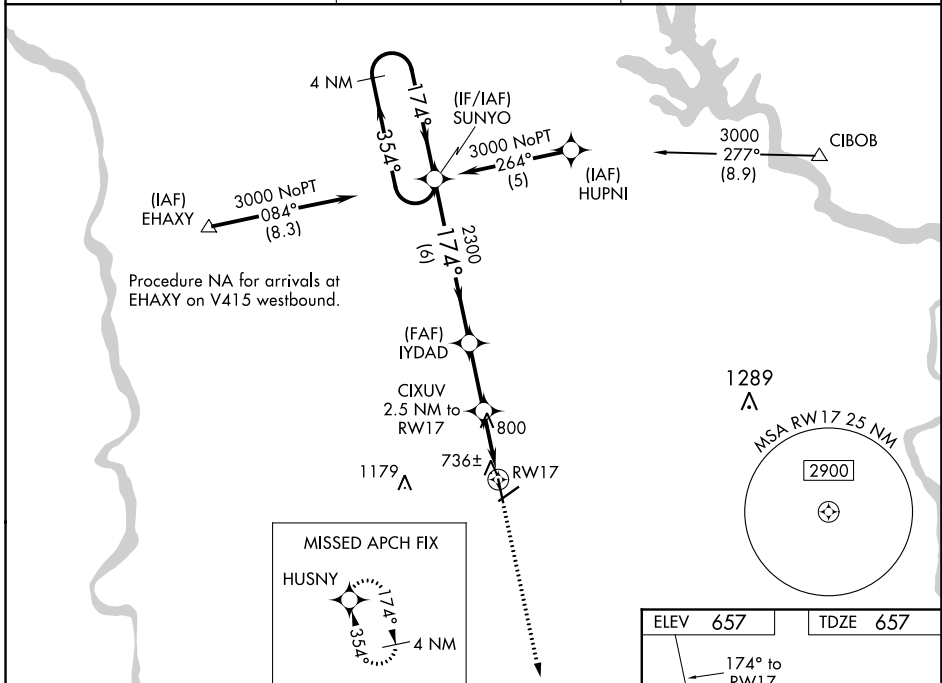
# RNAV (GPS) RWY 17

CHESTER CATAWBA RGNL (DCM)

**⚠** Circling to Rwy 5-23 NA at night. For uncompensated Baro-VNAV systems, LNAV/VNAV NA below -16°C (4°F) or above 47°C (116°F). DME/DME RNP-0.3 NA. Visibility reduction by helicopters NA. When local altimeter setting not received, use Rock Hill altimeter setting and increase all DA 33 feet and all MDA 40 feet and LNAV Cat D visibility ¼ mile. Baro-VNAV and VDP NA when using Rock Hill altimeter setting.

**⚠** MISSED APPROACH: Climb to 3000 direct HUSNY and hold.

AWOS-3 <b>120.975</b>	CHARLOTTE APP CON <b>120.05 307.8</b>	UNICOM <b>122.7</b> (CTAF) <b>📻</b>
--------------------------	--	--



CATEGORY	A	B	C	D
LPV DA		907-1	250 (300-1)	
LNAV/VNAV DA		1134-1¾	477 (500-1¾)	
LNAV MDA	1060-1	403 (500-1)	1060-1¼	403 (500-1¼)
CIRCLING	1160-1	503 (600-1)	1280-1¾ 623 (700-1¾)	1480-2¾ 823 (900-2¾)

SE-2, 27 JAN 2022 to 24 FEB 2022

SE-2, 27 JAN 2022 to 24 FEB 2022