

WAAS CH 97625 W36A	APP CRS 355°	Rwy ldg TDZE 1195 Apt Elev 1220	5000 1195 1220
--	------------------------	---	---

RNAV (GPS) RWY 36

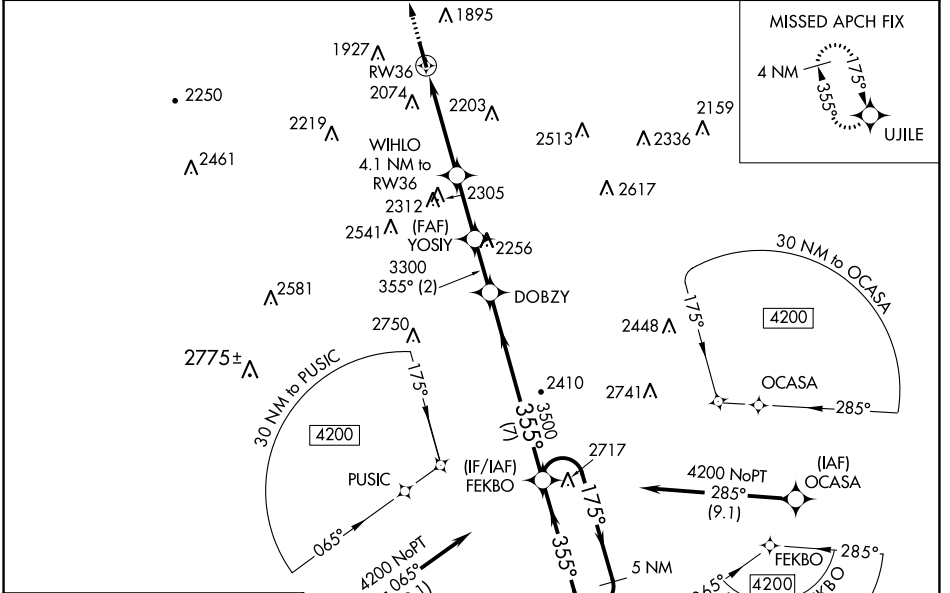
HORNELL MUNI (HTF)

▼ Night landing: RWY 18 NA. For uncompensated Baro-VNAV systems, LNAV/VNAV NA below -17°C (2°F) or above 54°C (130°F). DME/DME RNP-0.3 NA. Helicopter visibility reduction below 3/4 SM NA. When local altimeter setting not received, use Dansville altimeter setting and increase all DA 105 feet, all MDA 120 feet and LPV all Cats visibility 3/8 mile. LNAV/VNAV all Cats visibility 1 mile, and LNAV Cat B visibility 1/4 mile and Cat C visibility 1/2 mile. VDP and Baro-VNAV NA with Dansville altimeter setting.

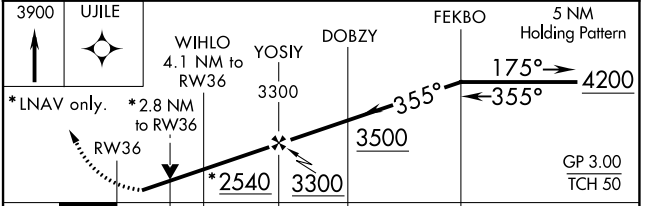
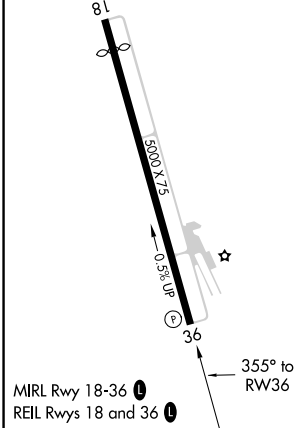
▲ NA
⊗ -19°C

MISSED APPROACH:
Climb to 3900 direct UJILE and hold.

AWOS-3 118.475	CLEVELAND CENTER 124.325 353.85	UNICOM 122.7 (CTAF) 0
--------------------------	---	---------------------------------



ELEV 1220	TDZE 1195
-----------	-----------



CATEGORY	A	B	C	D
LPV DA	1660-1½	465 (500-1½)		NA
LNAV/VNAV DA	2343-4	1148 (1200-4)		NA
LNAV MDA	2120-1¼	925 (900-1¼)	2120-2½ 925 (900-2½)	NA
CIRCLING	2360-1¼ 1140 (1200-1¼)	2360-1½ 1140 (1200-1½)	2440-3 1220 (1300-3)	NA

NE-2, 27 JAN 2022 to 24 FEB 2022

NE-2, 27 JAN 2022 to 24 FEB 2022