

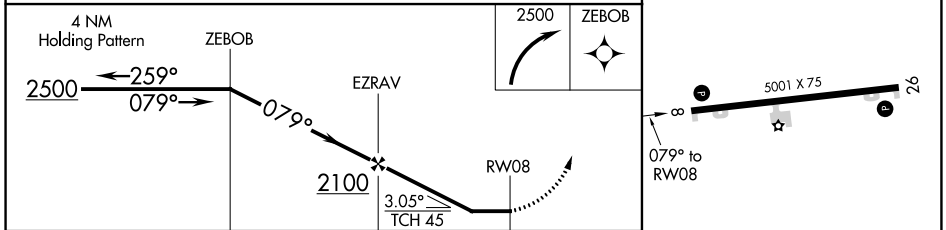
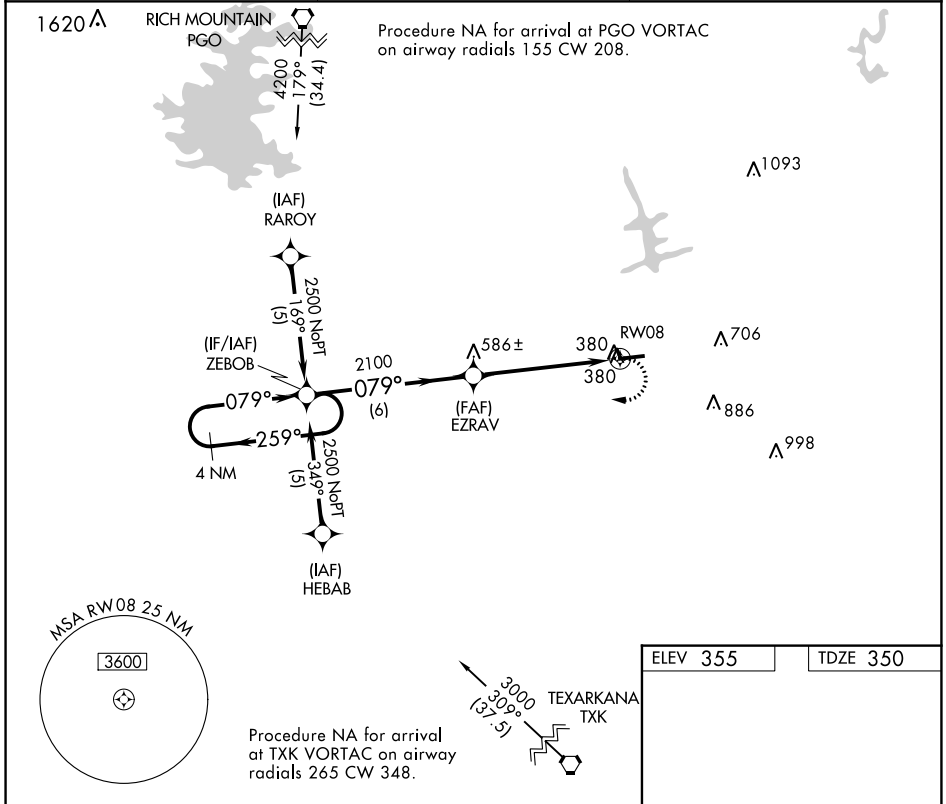
APP CRS	Rwy Idg	5001
079°	TDZE	350
	Apt Elev	355

RNAV (GPS) RWY 8

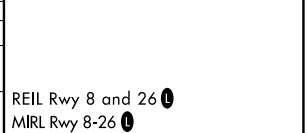
J LYNN HELMS SEVIER COUNTY (DE.Q)

RNP APCH.	<p>▼ If local altimeter setting not received, use Texarkana altimeter setting and increase all MDAs 100 feet.</p> <p>▲ Rwy 8 helicopter visibility reduction below 3/4 SM NA.</p>	MISSED APPROACH: Climbing right turn to 2500 direct ZEBOB and hold.
-----------	---	---

ASOS 134.075	FORT WORTH CENTER 123.925 269.475	UNICOM 122.8 (CTAF) ①
------------------------	---	---------------------------------



CATEGORY	A	B	C	D
LNAV MDA	780-1	430 (500-1)		NA
CIRCLING	900-1	545 (600-1)		NA



SC-1, 27 JAN 2022 to 24 FEB 2022

SC-1, 27 JAN 2022 to 24 FEB 2022