

WAAS CH <b>77818</b> <b>W07A</b>	APP CRS <b>065°</b>	Rwy Idg <b>5003</b> TDZE <b>147</b> Apt Elev <b>147</b>
--	------------------------	---

# RNAV (GPS) RWY 7

MARLBORO COUNTY JETPORT-H E AVENT FIELD (BBP)

RNP APCH.

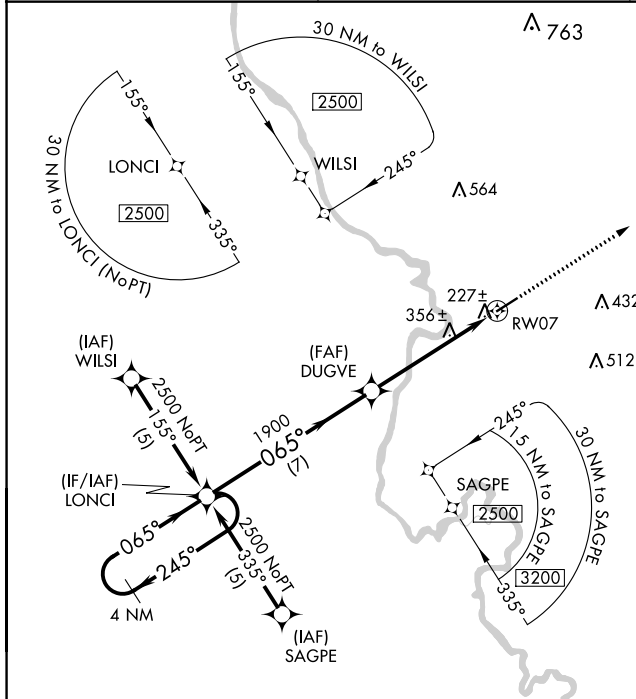
▼ Baro-VNAV NA when using Florence altimeter setting. For uncompensated Baro-VNAV systems, LNAV/VNAV NA below -15°C or above 48°C. Rwy 7 helicopter visibility reduction below ¾ SM NA. When local altimeter setting not received, use Florence altimeter setting and increase all DA 61 feet and MDA 80 feet; increase LPV all Cats, LNAV/VNAV all Cats, and LNAV Cats C and Cat D visibility ¼ mile. VDP NA with Florence altimeter setting.

MISSED APPROACH: Climb to 2500 direct LADKE and hold.

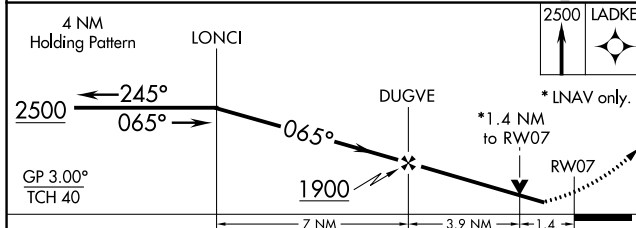
AWOS-3PT  
**123.825**

FLORENCE APP CON ★  
**118.6 341.7**

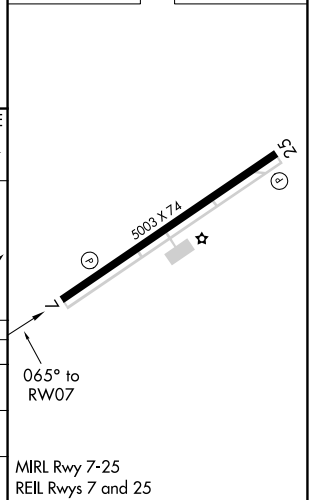
UNICOM  
**122.8 (CTAF)**



ELEV 147	TDZE 147
----------	----------



CATEGORY	A	B	C	D
LPV DA		437-1	290 (300-1)	
LNAV/VNAV DA		507-1¼	360 (400-1¼)	
LNAV MDA	620-1	473 (500-1)	620-1¼ 473 (500-1¼)	620-1½ 473 (500-1½)



SE-2, 27 JAN 2022 to 24 FEB 2022

SE-2, 27 JAN 2022 to 24 FEB 2022