

WAAS CH <b>53740</b> <b>W20A</b>	APP CRS <b>201°</b>	Rwy Idg TDZE Apt Elev	<b>4700</b> <b>117</b> <b>117</b>
--	------------------------	-----------------------------	---

# RNAV (GPS) RWY 20

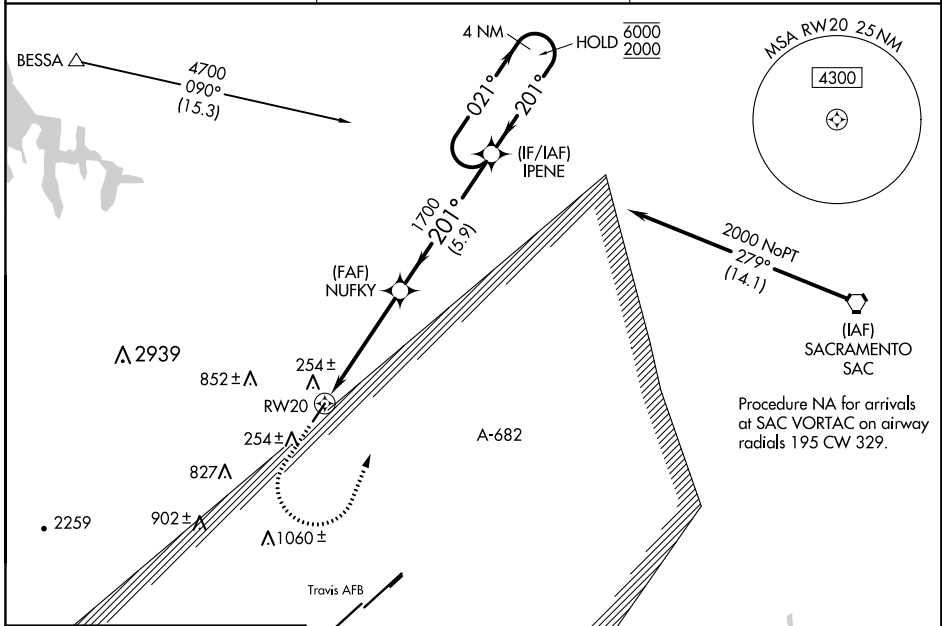
NUT TREE (VCB)

RNP APCH.

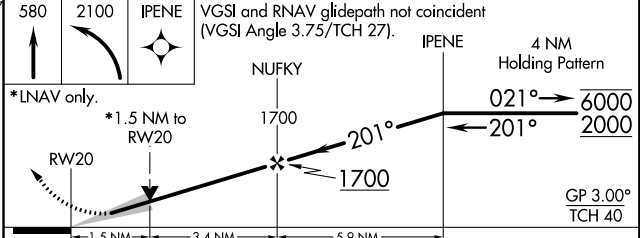
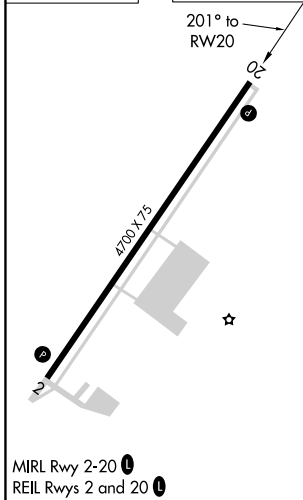
**⚠** Circling NA west of Rwy 2-20. Circling Rwy 2 NA at night.  
**⚠** For uncompensated Baro-VNAV systems, LNAV/VNAV NA below -3°C or above 54°C.

MISSED APPROACH: (Do not exceed 220K until IPENE) Climb to 580 then climbing left turn to 2100 direct IPENE and hold.  
 # Missed approach requires minimum climb of 229 feet per NM to 1300.

ASOS <b>134.75</b>	TRAVIS APP CON <b>128.4 281.45</b>	CTAF <b>122.85</b>
-----------------------	---------------------------------------	-----------------------



ELEV 117	TDZE 117
----------	----------



CATEGORY	A	B	C	D
LPV DA#	367-3/4		250 (300-3/4)	
LPV DA	384-7/8		267 (300-7/8)	
LNAV/VNAV DA	614-1 3/8		497 (500-1 3/8)	
LNAV MDA	720-1 603 (700-1)		720-1 3/4 603 (700-1 3/4)	
<b>C</b> CIRCLING	720-1 603 (700-1)		960-2 1/2 843 (900-2 1/2) 1480-3 1363 (1400-3)	

SW-2, 27 JAN 2022 to 24 FEB 2022

SW-2, 27 JAN 2022 to 24 FEB 2022