

APP CRS	Rwy Idg	3305
144°	TDZE	1288
	Apt Elev	1288

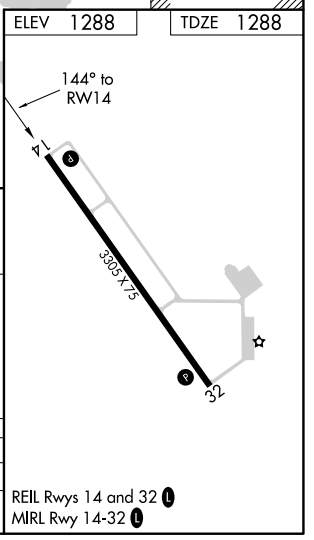
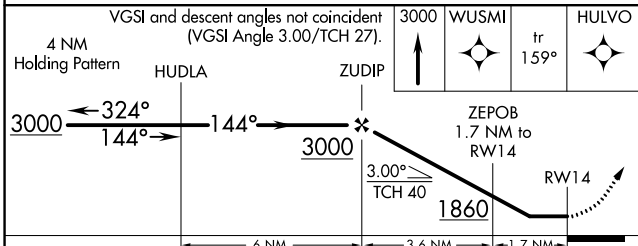
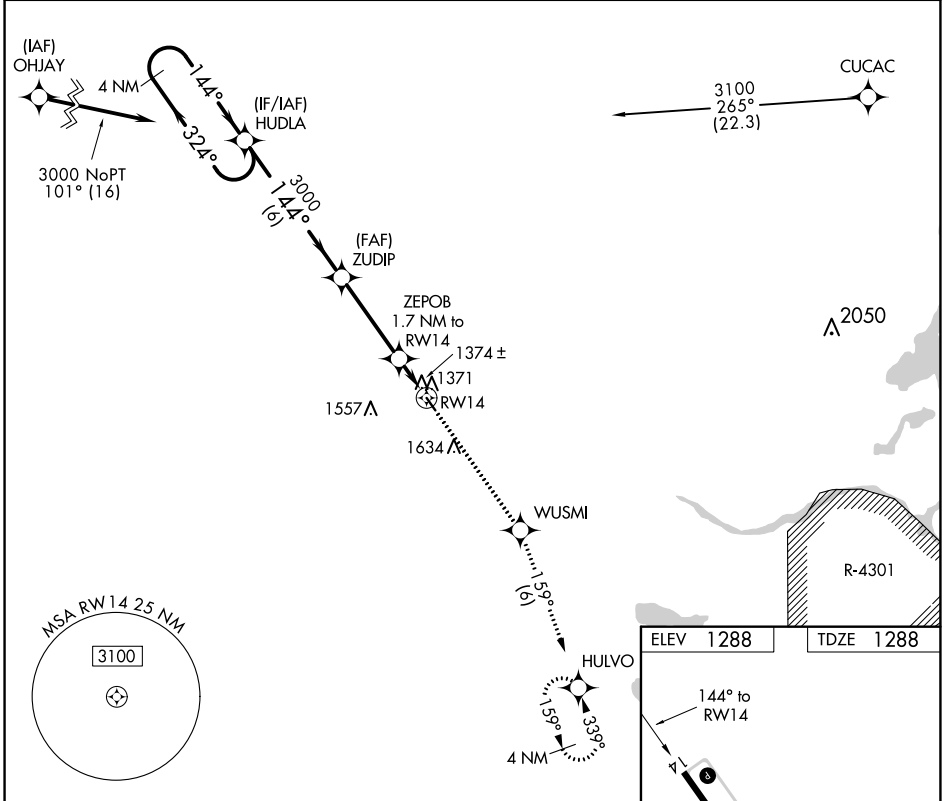
RNAV (GPS) RWY 14

STAPLES MUNI (SAZ)

⚠ Rwy 14 Straight-in and Circling minimums NA at night. Rwy 14 helicopter visibility reduction below 1 SM NA. DME/DME RNP-0.3 NA. When local altimeter setting not received, use Pine River altimeter setting and increase all MDA 80 feet and all Cat C visibilities ¼ SM.

⚠ MISSED APPROACH: Climb to 3000 direct WUSMI and on track 159° to HULVO and hold.

AWOS-3 118.325	MINNEAPOLIS CENTER 118.05 239.0	GCO 121.725	CTAF 122.9 0
--------------------------	---	-----------------------	------------------------



CATEGORY	A	B	C	D
LNVA MDA	1640-1	352 (400-1)		NA
C CIRCLING	1780-1 492 (500-1)	1940-1 652 (700-1)	1940-1¾ 652 (700-1¾)	NA

NC-1, 27 JAN 2022 to 24 FEB 2022

NC-1, 27 JAN 2022 to 24 FEB 2022