

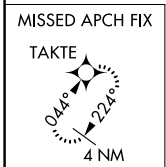
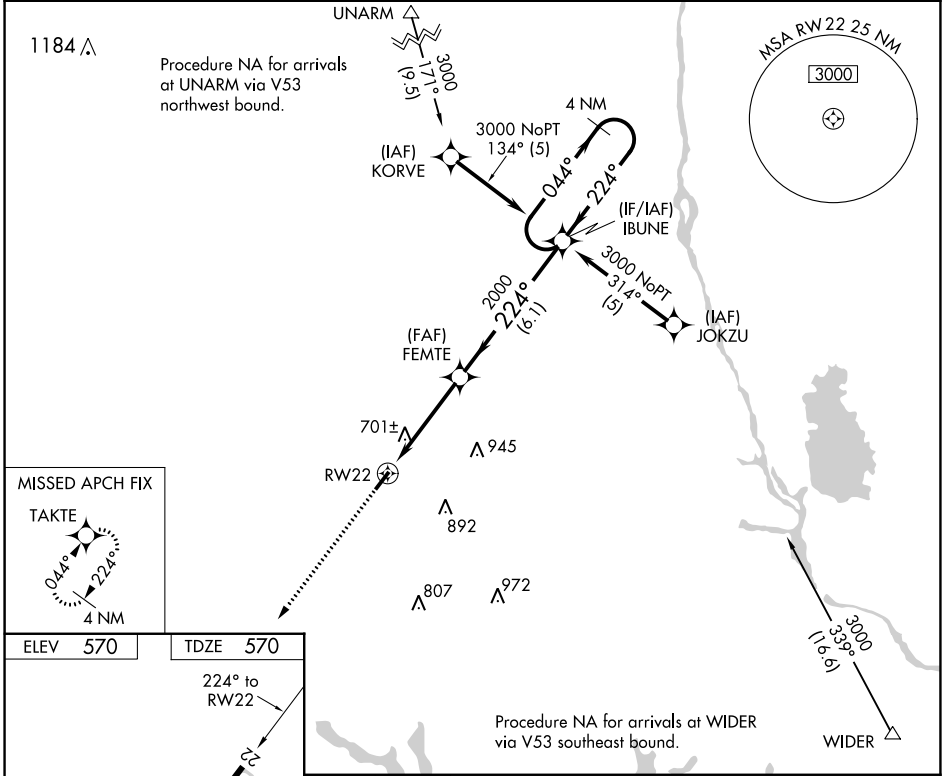
APP CRS	Rwy Idg	4001
224°	TDZE	570
	Apt Elev	570

RNAV (GPS) RWY 22

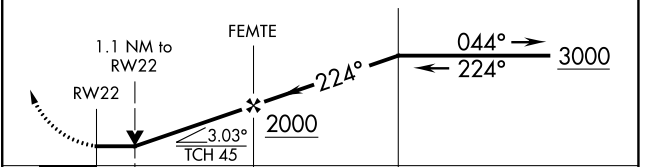
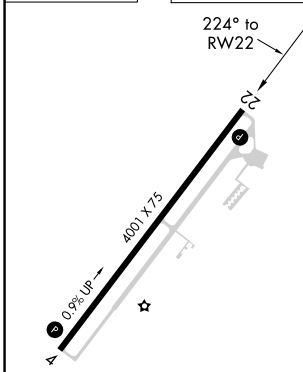
NEWBERRY COUNTY (EOE)

<p>⚠ DME/DME RNP-0.3 NA. When local altimeter setting not received, use Greenwood County altimeter setting and increase all MDA 80 feet. VDP NA when using Greenwood County altimeter setting. Helicopter visibility reduction below $\frac{3}{4}$ SM NA.</p>	<p>MISSED APPROACH: Climb to 3000 direct TAKTE and hold.</p>
---	--

<p>AWOS-3 124.275</p>	<p>COLUMBIA APP CON 133.4 285.6</p>	<p>UNICOM 122.8 (CTAF) 📻</p>
----------------------------------	--	--



ELEV 570	TDZE 570
----------	----------



CATEGORY	A	B	C	D
LNAV MDA	960-1	390 (400-1)	NA	
CIRCLING	1080-1 510 (600-1)	1100-1 530 (600-1)	NA	

SE-2, 27 JAN 2022 to 24 FEB 2022

SE-2, 27 JAN 2022 to 24 FEB 2022