

APP CRS	Rwy Idg	4001
044°	TDZE	558
	Apt Elev	570

RNAV (GPS) RWY 4

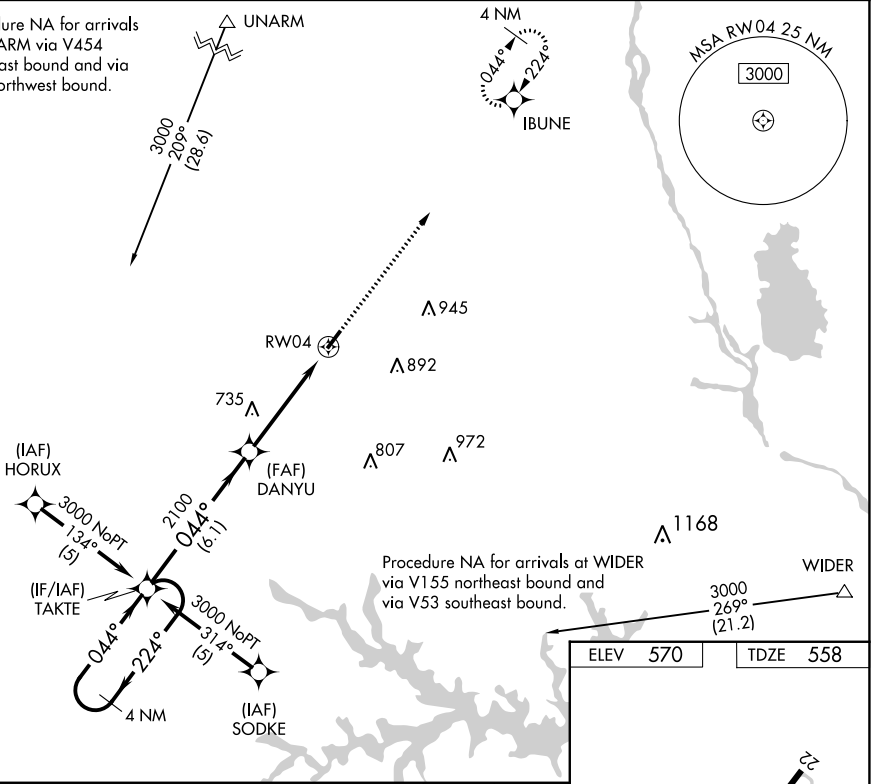
NEWBERRY COUNTY (E/OE)

▽ DME/DME RNP-0.3 NA. When local altimeter setting not received, use Greenwood County altimeter setting and increase all MDA 80 feet. VDP NA when using Greenwood County altimeter setting. Helicopter visibility reduction below 3/4 SM NA.

MISSED APPROACH: Climb to 3000 direct IBUNE and hold.

AWOS-3 124.275	COLUMBIA APP CON 133.4 285.6	UNICOM 122.8 (CTAF) 0
--------------------------	--	---------------------------------

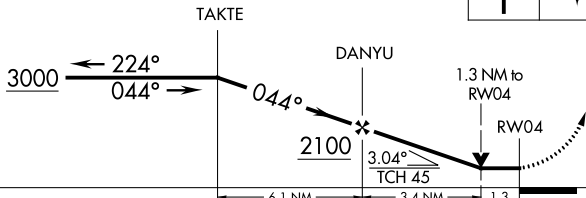
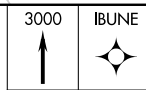
Procedure NA for arrivals at UNARM via V454 northeast bound and via V53 northwest bound.



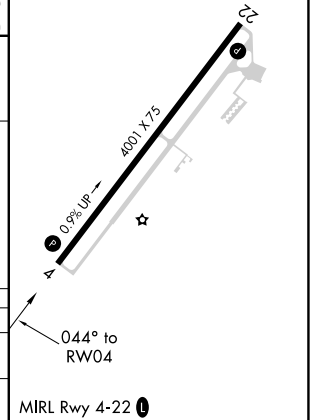
Procedure NA for arrivals at WIDER via V155 northeast bound and via V53 southeast bound.

ELEV 570	TDZE 558
----------	----------

4 NM Holding Pattern



CATEGORY	A	B	C	D
LNVA MDA	1000-1	442 (500-1)		NA
CIRCLING	1080-1 510 (600-1)	1100-1 530 (600-1)		NA



SE-2, 27 JAN 2022 to 24 FEB 2022

SE-2, 27 JAN 2022 to 24 FEB 2022