

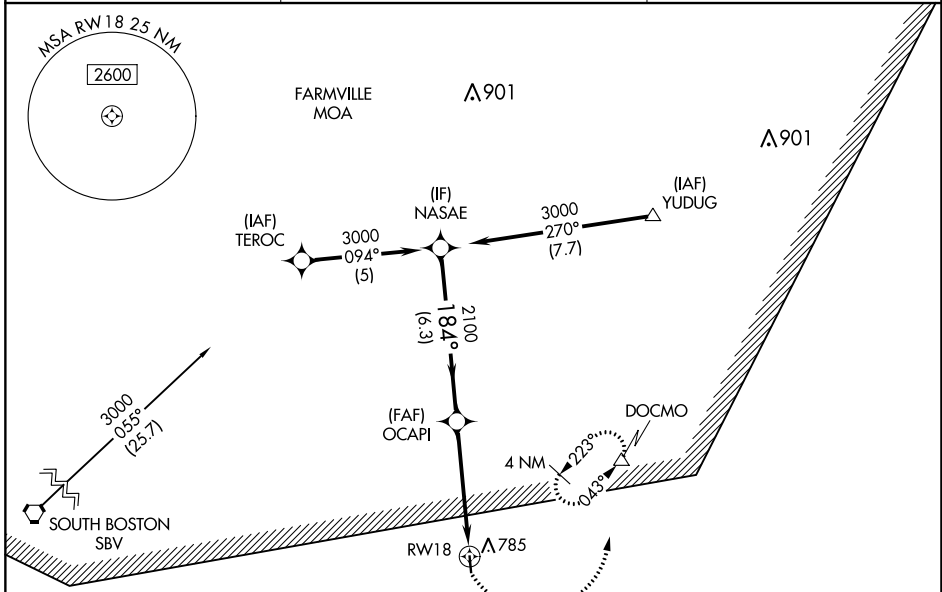
APP CRS	Rwy Idg	3400
184°	TDZE	503
	Apt Elev	503

RNAV (GPS) RWY 18

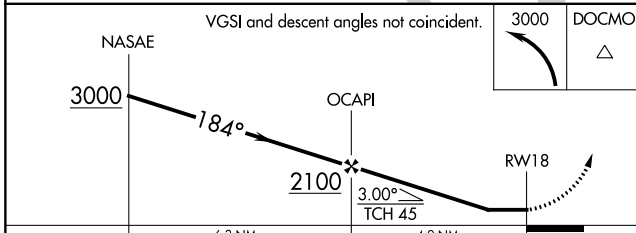
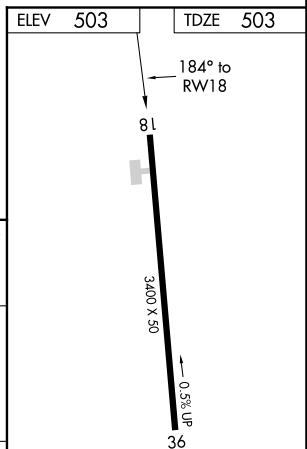
CHASE CITY MUNI (CXE)

RNP APCH.		MISSED APPROACH: Climbing left turn to 3000 direct DOCMO and hold, continue climb-in-hold to 3000.
NA	Use South Hill altimeter setting, when not received use Danville altimeter setting and increase all MDA 60 feet. Procedure NA at night. Rwy 18 helicopter visibility reduction below 1 SM NA.	

AWOS-3 121.225	WASHINGTON CENTER 118.75 353.9	UNICOM 122.9 (CTAF)
--------------------------	--	-------------------------------



Procedure NA for arrivals at SBV VORTAC on airway radials 032 CW 086.



CATEGORY	A	B	C	D
LNAV MDA	1520-3	1017 (1100-3)		NA

NE-3, 27 JAN 2022 to 24 FEB 2022

NE-3, 27 JAN 2022 to 24 FEB 2022