

WAAS CH <b>90424</b> <b>W22A</b>	APP CRS <b>220°</b>	Rwy Idg TDZE Apt Elev	<b>4401</b> <b>35</b> <b>35</b>
--	------------------------	-----------------------------	---------------------------------------

# RNAV (GPS) RWY 22

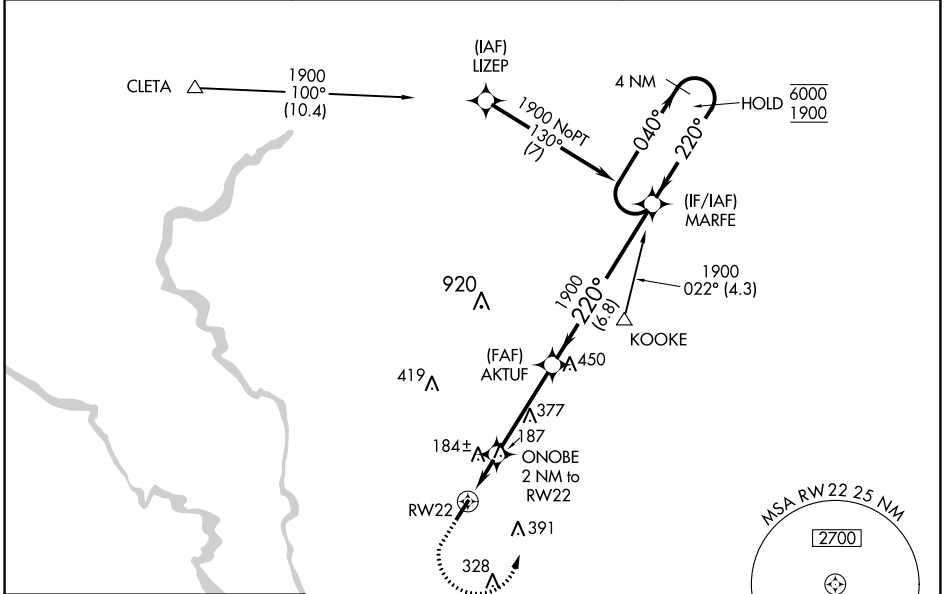
CONWAY-HORRY COUNTY (HYW)

RNP APCH.

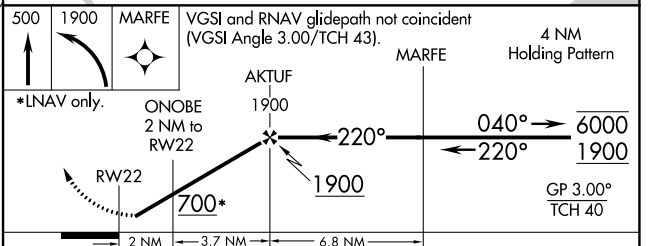
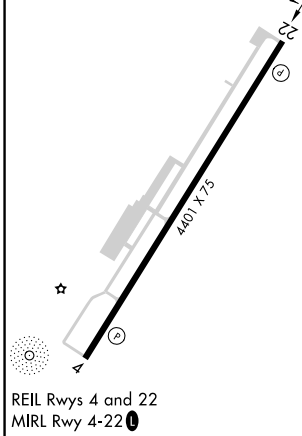
**⚠** Rwy 22 helicopter visibility reduction below 1 SM NA. Straight-in Rwy 22 at night, operational VGSI required, remain on or above VGSI glidepath until threshold. For uncompensated Baro-VNAV systems, LNAV/VNAV NA below -15°C or above 54°C.

MISSED APPROACH: Climb to 500 then climbing left turn to 1900 direct MARFE and hold.

AWOS-3 <b>119.525</b>	MYRTLE BEACH APP CON★ <b>127.4 257.95</b>	UNICOM <b>122.7 (CTAF) 0</b>
--------------------------	--	---------------------------------



ELEV 35	TDZE 35
---------	---------



CATEGORY	A	B	C	D
LPV DA	285-1 250 (300-1)			
LNAV/VNAV DA	438-1½ 403 (500-1½)			
LNAV MDA	440-1	405 (500-1)	440-1½	405 (500-1½)
<b>C</b> CIRCLING	520-1 485 (500-1)	540-1 505 (600-1)	700-1¾ 665 (700-1¾)	700-2 665 (700-2)

SE-2, 27 JAN 2022 to 24 FEB 2022

SE-2, 27 JAN 2022 to 24 FEB 2022