

WAAS CH 56524 W04A	APP CRS 040°	Rwy Idg 4401 TDZE 34 Apt Elev 35
--	------------------------	---

RNAV (GPS) RWY 4

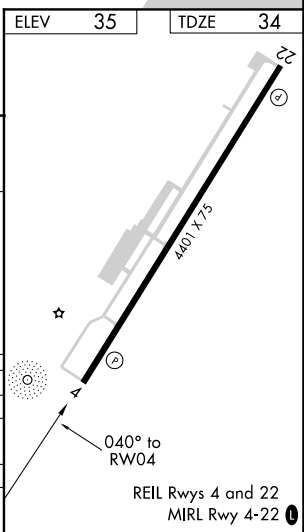
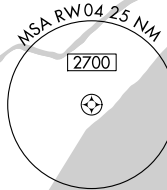
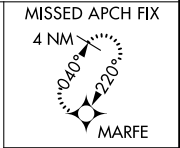
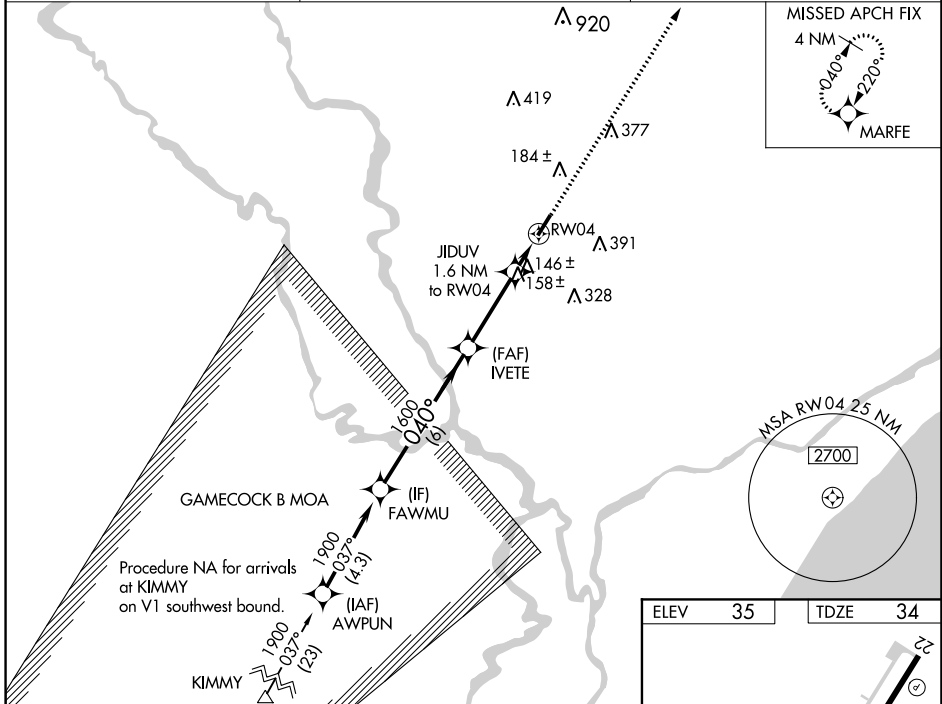
CONWAY-HORRY COUNTY (HYW)

RNP APCH.

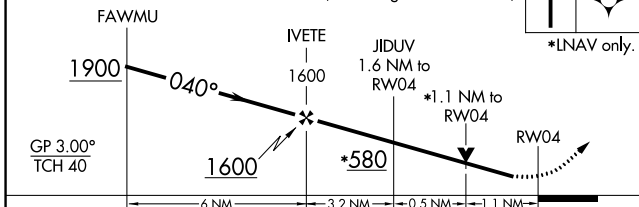
⚠ When Circling to Rwy 22 at night, operational VGSI required, remain on or above VGSI glidepath until threshold. Rwy 4 helicopter visibility reduction below $\frac{3}{4}$ SM NA. For uncompensated Baro-VNAV systems, LNAV/VNAV NA below -15°C or above 54°C.

MISSED APPROACH: Climb to 1900 direct MARFE and hold.

AWOS-3 119.525	MYRTLE BEACH APP CON★ 127.4 257.95	UNICOM 122.7 (CTAF) ①
--------------------------	--	---------------------------------



VGSI and RNAV glidepath not coincident (VGSI Angle 3.35/TCH 48).



CATEGORY	A	B	C	D
LPV DA		315- $\frac{7}{8}$	281 (300- $\frac{7}{8}$)	
LNAV/DA VNAV		525-1 $\frac{3}{8}$	491 (500-1 $\frac{3}{8}$)	
LNAV MDA	460-1	426 (500-1)	460-1 $\frac{1}{4}$	426 (500-1 $\frac{1}{4}$)
Ⓢ CIRCLING	520-1 485 (500-1)	540-1 505 (600-1)	700-1 $\frac{3}{4}$ 665 (700-1 $\frac{3}{4}$)	700-2 665 (700-2)

SE-2, 27 JAN 2022 to 24 FEB 2022

SE-2, 27 JAN 2022 to 24 FEB 2022