

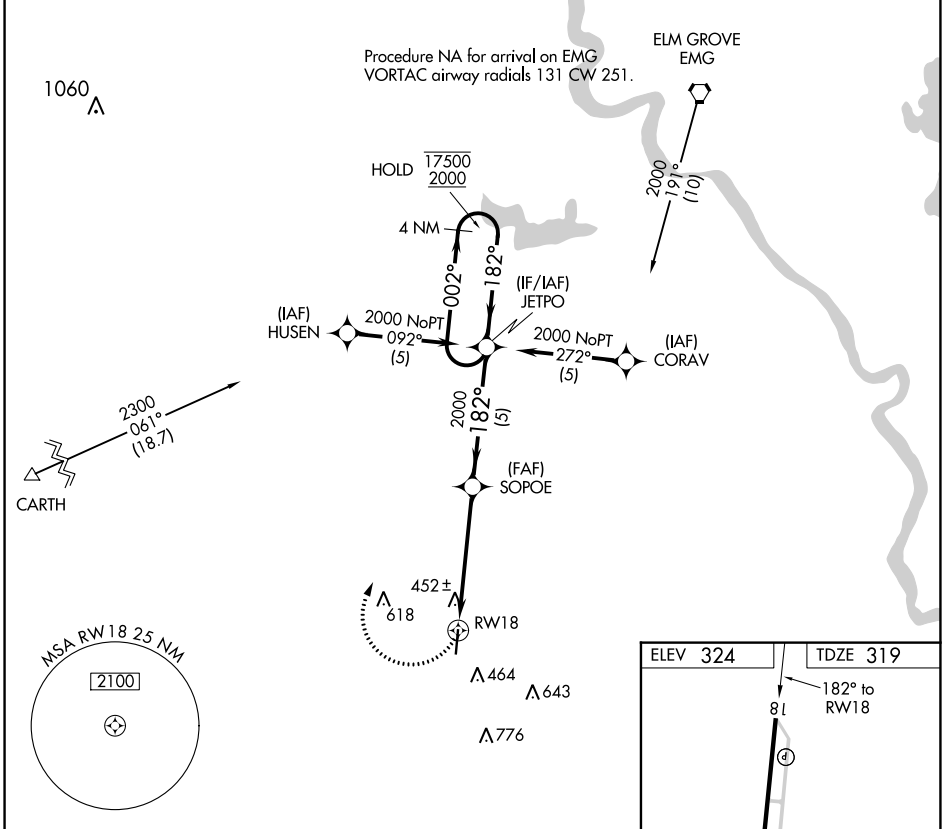
APP CRS	Rwy Idg	5005
182°	TDZE	319
	Apt Elev	324

RNAV (GPS) RWY 18

C E 'RUSTY' WILLIAMS (3F3)

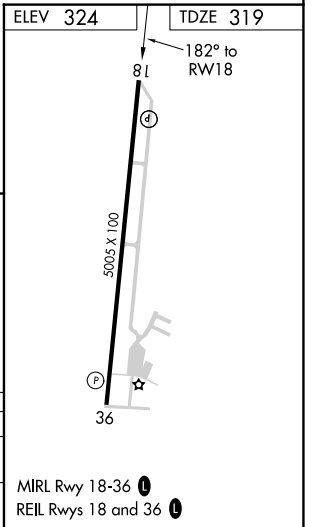
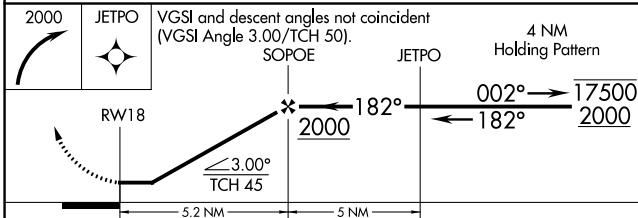
RNP APCH.
 Procedure NA at night. Rwy 18 helicopter visibility reduction below 1 SM NA. When local altimeter setting not received, use Shreveport Rgnl altimeter setting; increase Circling Cat C MDA 80 feet and visibility 1/2 SM.
 MISSED APPROACH: Climbing right turn to 2000 direct JETPO and hold.

AWOS-3PT 119.125	SHREVEPORT APP CON ★ 119.9 335.55	UNICOM 122.8 (CTAF) 0
----------------------------	---	---------------------------------



SC-4, 27 JAN 2022 to 24 FEB 2022

SC-4, 27 JAN 2022 to 24 FEB 2022



CATEGORY	A	B	C	D
LNAV MDA	780-1 461 (500-1)		780-1 1/4 461 (500-1 1/4)	NA
CIRCLING	880-1 556 (600-1)		920-1 1/2 596 (600-1 1/2)	NA