

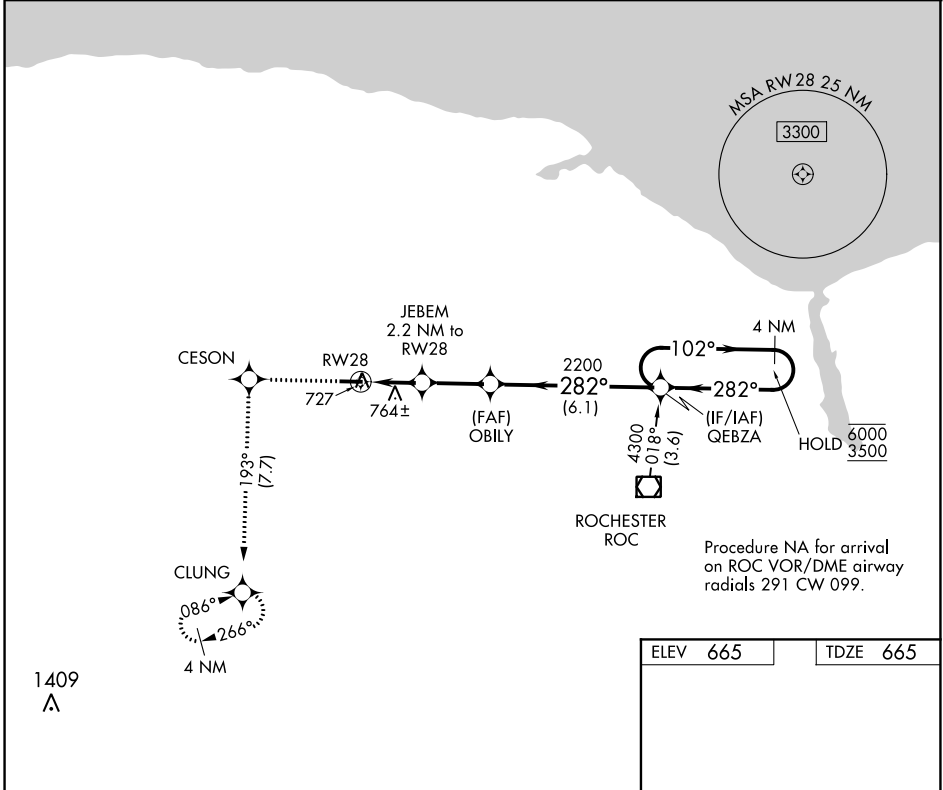
APP CRS 282°	Rwy Idg TDZE Apt Elev	4206 665 665
------------------------	-----------------------------	---

RNAV (GPS) RWY 28

LEDGEDALE AIRPARK (7G0)

RNP APCH.	MISSED APPROACH: Climb to 3500 direct CESON and on track 193° to CLUNG and hold, continue climb-in-hold to 3500.
▼ Rwy 28 helicopter visibility reduction below 1 SM NA. ▲ NA Procedure NA at night.	

ROCHESTER APP CON 123.7 322.3	UNICOM 122.7 (CTAF)
---	-------------------------------



NE-2, 27 JAN 2022 to 24 FEB 2022

NE-2, 27 JAN 2022 to 24 FEB 2022

3500	CESON	tr 193°	CLUNG	
CATEGORY	A	B	C	D
LNVA MDA	1060-1	395 (400-1)	NA	
CIRCLING	1160-1	495 (500-1)	NA	

