

EASTON, PENNSYLVANIA

AL-6355 (FAA)

19059

APP CRS	Rwy Idg	1956
359°	TDZE	N/A
	Apt Elev	397

RNAV (GPS)-A

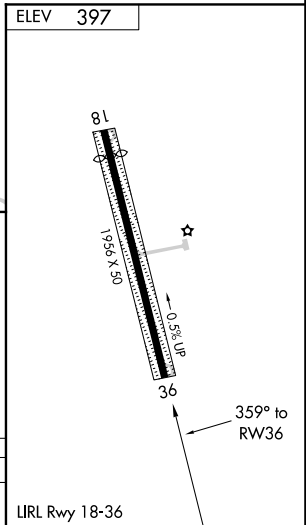
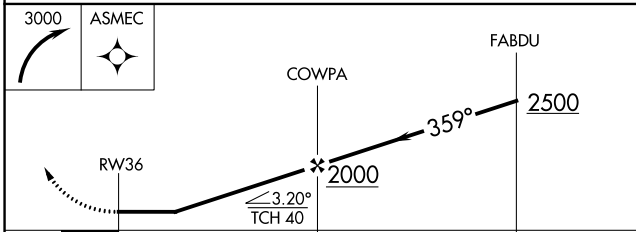
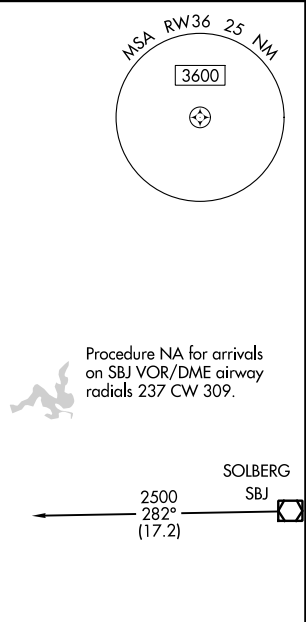
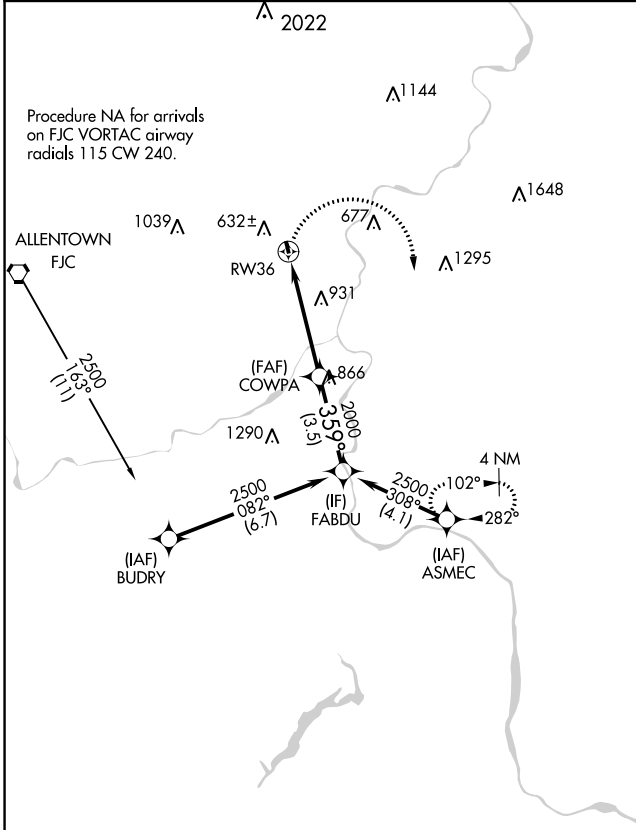
BRADEN AIRPARK (N43)

NA DME/DME RNP-0.3 NA. Procedure NA at night. Helicopter visibility reduction below 1 SM NA. Use Allentown Lehigh Valley Intl altimeter setting; when not received, procedure NA.

MISSED APPROACH: Climbing right turn to 3000 direct ASMEC and hold.

ALLENTOWN APP CON
119.65 124.45 351.8

UNICOM
123.0 (CTAF)



CATEGORY	A	B	C	D
CIRCLING	1220-1 823 (900-1)	1220-1¼ 823 (900-1¼)		NA

LIRL Rwy 18-36

BRADEN AIRPARK (N43)
RNAV (GPS)-A

EASTON, PENNSYLVANIA

Orig 04FEB16

40°45'N-75°15'W

NE-4, 27 JAN 2022 to 24 FEB 2022

NE-4, 27 JAN 2022 to 24 FEB 2022