

WAAS CH <b>63133</b> <b>W09A</b>	APP CRS <b>088°</b>	Rwy Idg <b>3599</b> TDZE <b>1483</b> Apt Elev <b>1483</b>
--	------------------------	---

# RNAV (GPS) RWY 9

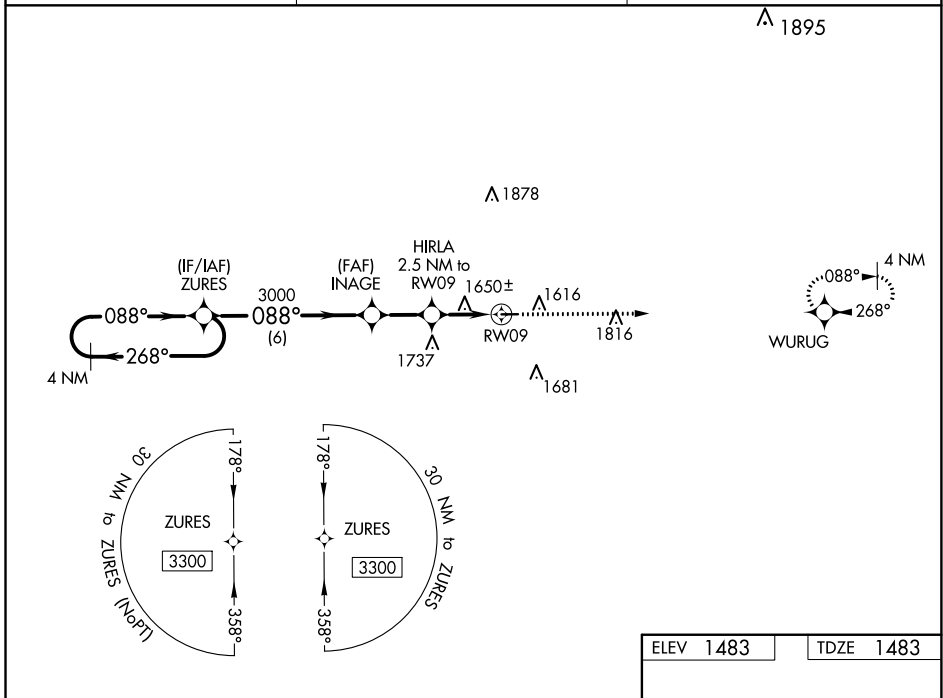
CASSVILLE MUNI (94K)

**▼** Baro-VNAV NA. DME/DME RNP-0.3 NA. Helicopter visibility reduction below 1 SM NA.  
**▲ NA** Procedure NA at night. Use Monett altimeter setting, when not received, use Rogers altimeter setting and increase all DA 13 feet and all MDA 20 feet and LNAV/VNAV all Cats visibility to 1 1/8 mile.

**MISSED APPROACH:**  
Climb to 3600 direct WURUG and hold.

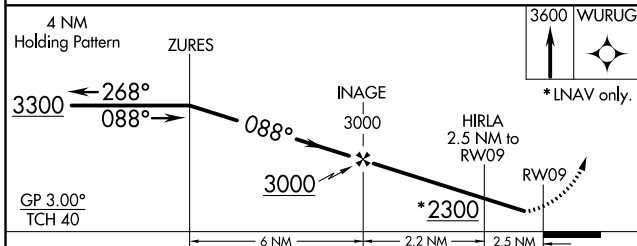
HFJ AWOS-3 <b>118.275</b>	SPRINGFIELD APP CON <b>124.95 318.2</b>	CTAF <b>122.9</b>
------------------------------	--	----------------------

▲ 1895



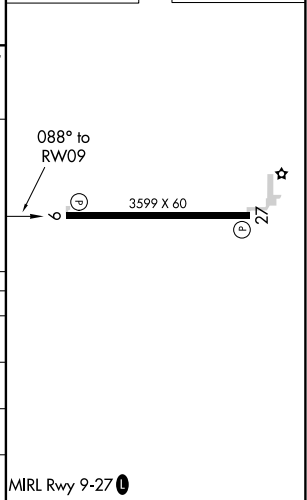
NC-3, 27 JAN 2022 to 24 FEB 2022

NC-3, 27 JAN 2022 to 24 FEB 2022



ELEV 1483	TDZE 1483
-----------	-----------

CATEGORY	A	B	C	D
LPV DA	1843-1 1/4	360 (400-1 1/4)		NA
LNAV/VNAV DA	1998-1 3/4	515 (600-1 3/4)		NA
LNAV MDA	1960-1	477 (500-1)	1960-1 3/8 477 (500-1 3/8)	NA
<b>☐</b> CIRCLING	2000-1 517 (600-1)	2020-1 537 (600-1)	2160-2 677 (700-2)	NA



MIRL Rwy 9-27