

APP CRS <b>354°</b>	Rwy Idg <b>4073</b>
	TDZE <b>2601</b>
	Apt Elev <b>2601</b>

# RNAV (GPS) RWY 35

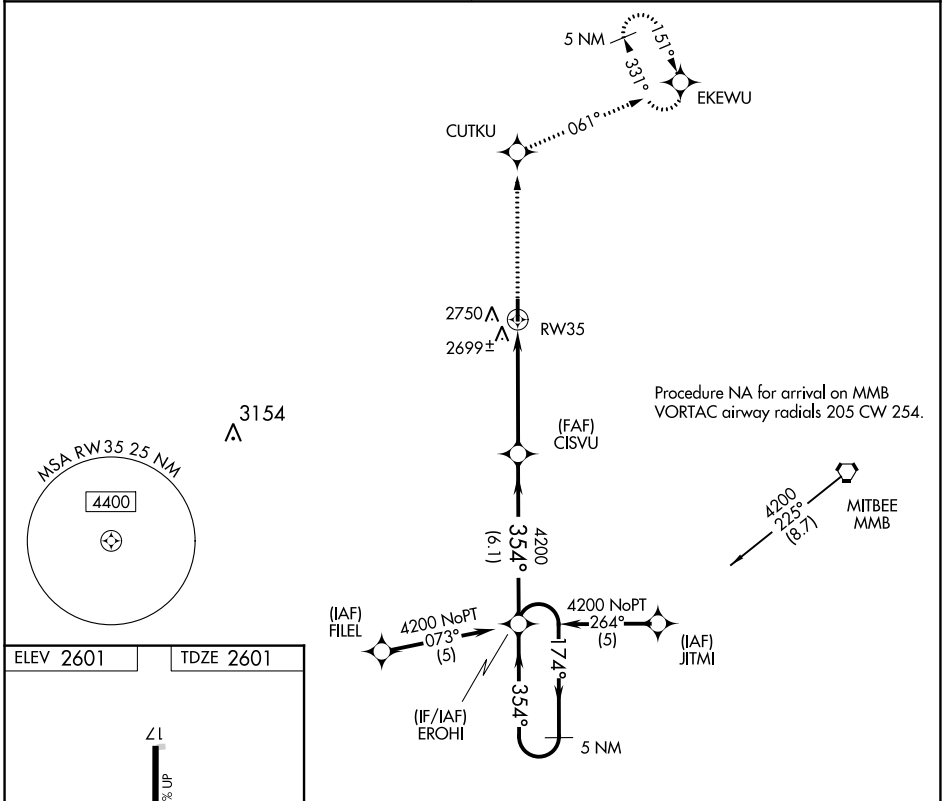
FOLLETT/LIPSCOMB COUNTY (T93)

RNP APCH.  
 Use Gage, OK altimeter setting, when not received use Perryton, TX altimeter setting and increase all MDA 20 feet.

MISSED APPROACH: Climb to 6000 direct CUTKU and on track 061° to EKEWU and hold, continue climb-in-hold to 6000.

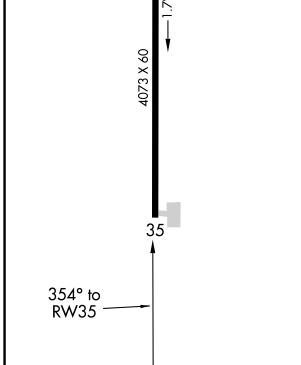
KANSAS CITY CENTER  
**126.95 379.2**

CTAF  
**122.9**



SC-2, 27 JAN 2022 to 24 FEB 2022

SC-2, 27 JAN 2022 to 24 FEB 2022



6000	CUTKU	tr 061°	EKEWU	CISVU	EROHI	5 NM Holding Pattern
CATEGORY	A	B	C	D		
LNAV MDA	3100-1 499 (500-1)			NA		
CIRCLING	3160-1 559 (600-1)			NA		