

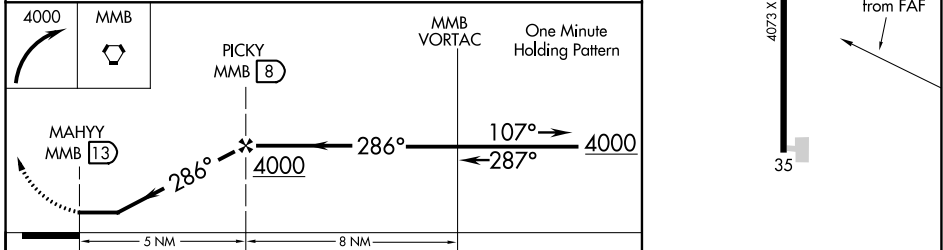
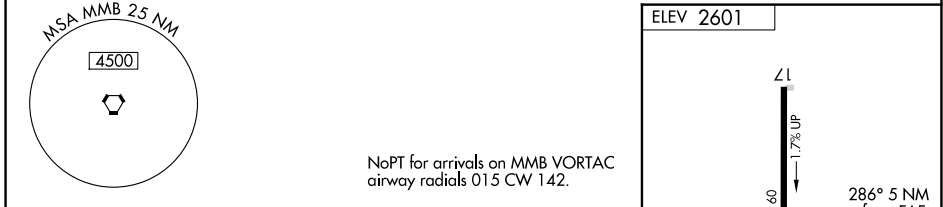
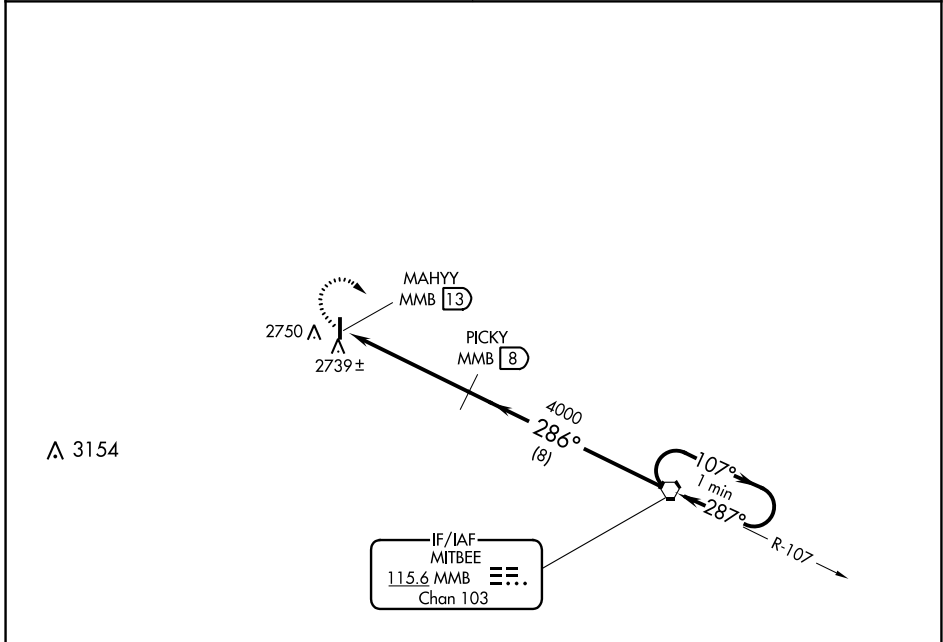
VORTAC MMB 115.6 Chan 103	APP CRS 286°	Rwy Idg TDZE Apt Elev	N/A N/A 2601
---	------------------------	-----------------------------	---

VOR/DME-A

FOLLETT/LIPSCOMB COUNTY (T93)

<p>▽ Use Gage, OK altimeter setting, when not received use Perryton, TX altimeter setting and increase all MDA 20 feet.</p> <p>▲ NA</p>	<p>MISSED APPROACH: Climbing right turn to 4000 direct MMB VORTAC and hold.</p>
---	--

<p>KANSAS CITY CENTER 126.95 379.2</p>	<p>CTAF 122.9</p>
---	------------------------------



CATEGORY	A	B	C	D
CIRCLING	3160-1	559 (600-1)	NA	

SC-2, 27 JAN 2022 to 24 FEB 2022

SC-2, 27 JAN 2022 to 24 FEB 2022