

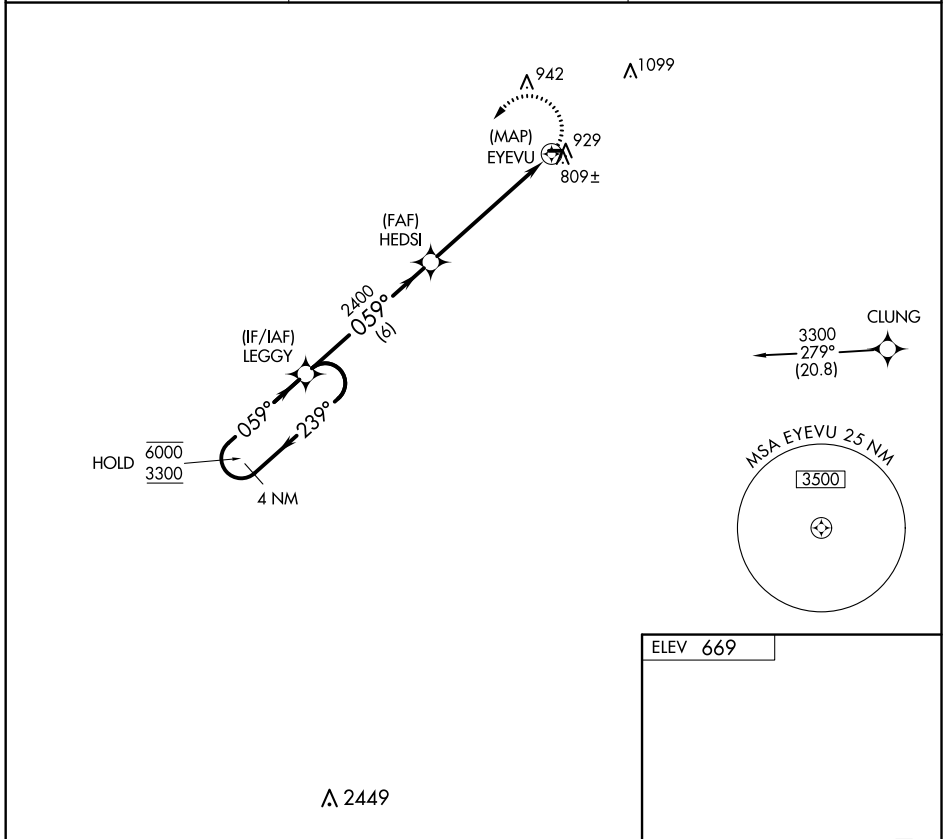
APP CRS <b>059°</b>	Rwy ldg TDZE Apt Elev	<b>N/A</b> <b>N/A</b> <b>669</b>
------------------------	-----------------------------	--

# RNAV (GPS)-B

PINE HILL (9G6)

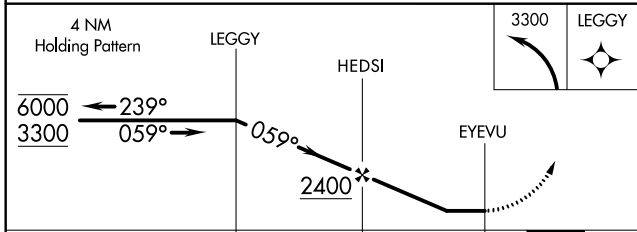
RNP APCH - GPS.	<p><b>▼</b> Rwy 10 and 28 helicopter visibility reduction below 1 SM NA. Use Buffalo Niagara Intl altimeter setting; when not received, use Niagara Falls Intl altimeter setting and increase all MDA 20 feet. Procedure NA at night.</p> <p><b>▲</b> NA</p>	MISSED APPROACH: Climbing left turn to 3300 direct LEGGY and hold.
-----------------	--	--

BUF AWOS <b>135.35</b>	BUFFALO APP CON <b>126.15 263.125</b>	UNICOM <b>123.0 (CTAF) 0</b>
---------------------------	--	---------------------------------



NE-2, 27 JAN 2022 to 24 FEB 2022

NE-2, 27 JAN 2022 to 24 FEB 2022



ELEV 669				
CATEGORY	A	B	C	D
<b>C</b> CIRCLING	1360-1	691 (700-1)		NA
LIRL Rwy 10-28 0				