

WAAS CH 82126 W02A	APP CRS 021°	Rwy Idg TDZE Apt Elev	4698 3205 3205
--	------------------------	-----------------------------	---

RNAV (GPS) RWY 2

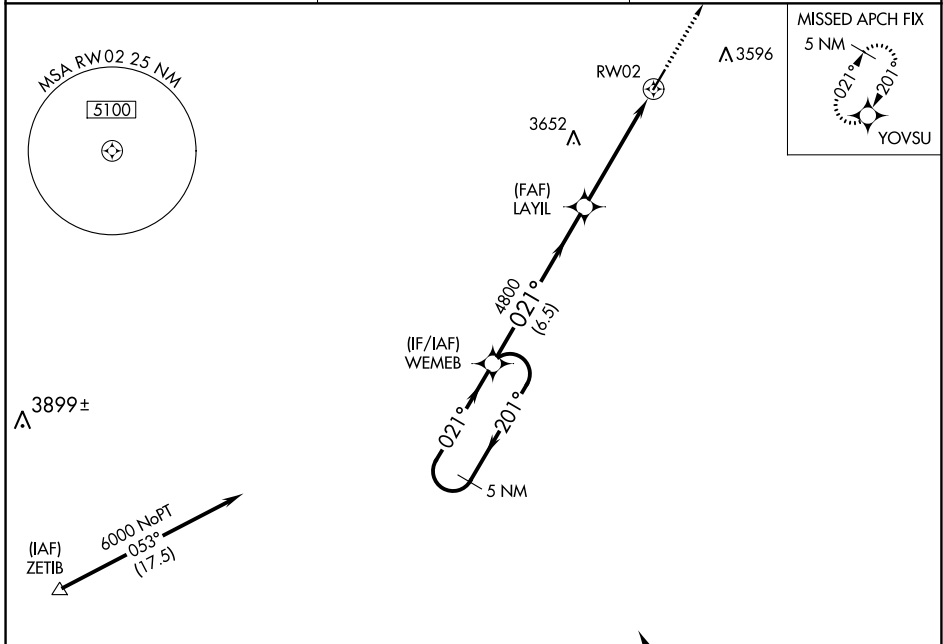
GRUVER MUNI (E19)

▽ DME/DME RNP-0.3 NA. Helicopter visibility reduction below 1 SM NA. Use Guymon altimeter setting, when not received, use Borger altimeter setting and increase all MDA 40 feet. Procedure NA at night.

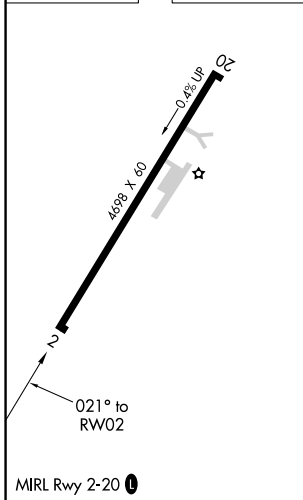
▲ NA

MISSED APPROACH: Climb to 6000 direct YOVSU and hold.

GUY ASOS 119.925	ALBUQUERQUE CENTER 127.85 285.475	CTAF 122.9
----------------------------	---	----------------------



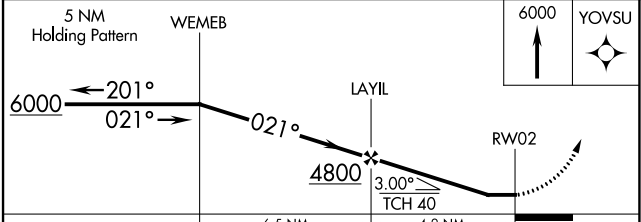
ELEV 3205	TDZE 3205
-----------	-----------



Procedure NA for arrivals on BGD VORTAC airway radials 241 CW 050.

6000 NoPT (17.5)

(IAF) BORGER BGD



CATEGORY	A	B	C	D
LP MDA	3780-1	575 (600-1)		NA
LNAV MDA	3780-1	575 (600-1)		NA
CIRCLING	3780-1	575 (600-1)		NA

SC-2, 27 JAN 2022 to 24 FEB 2022

SC-2, 27 JAN 2022 to 24 FEB 2022