

NDB/DME GAM 369 Chan 92 (114.5)	APP CRS 345°	Rwy Idg 4500 TDZE 26 Apt Elev 27
---	------------------------	---

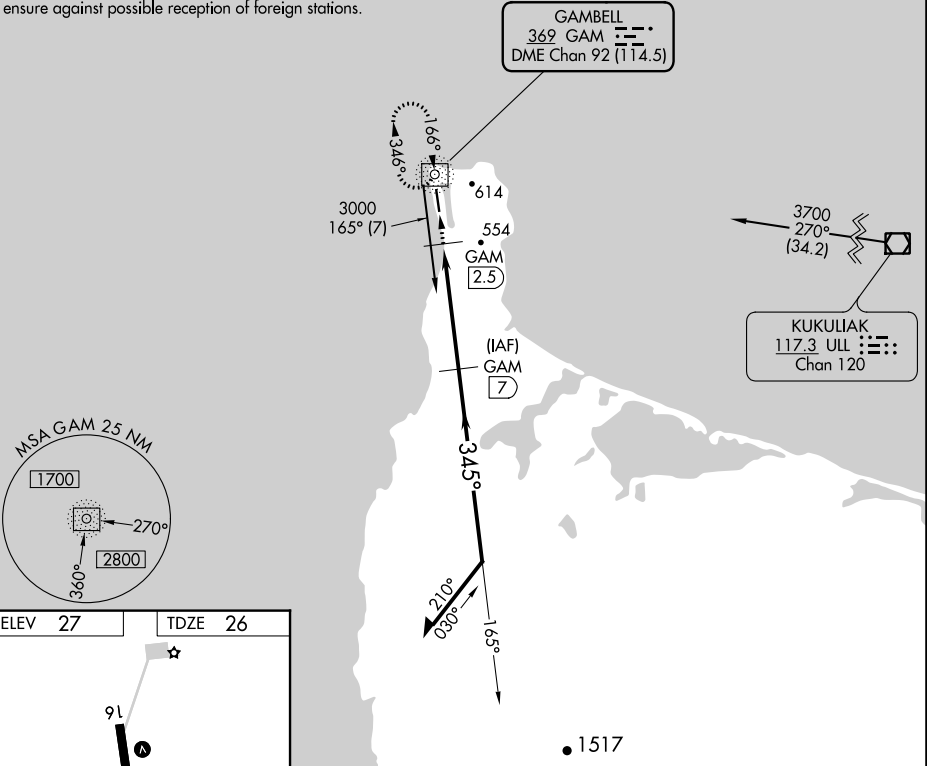
NDB/DME RWY 34

GAMBELL(GAM)(PAGM)

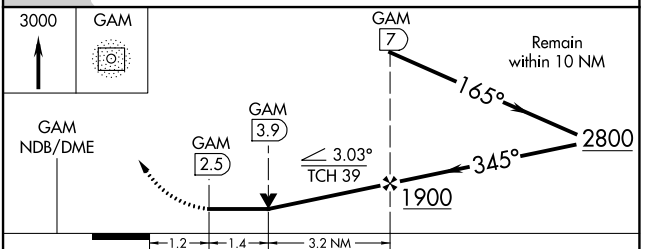
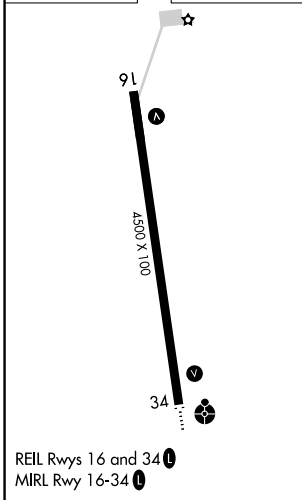
<p>-27°C</p>	<p>ODALS</p>	<p>MISSED APPROACH: Climb to 3000 direct GAM NDB/DME and in GAM NDB/DME holding pattern.</p>
	<p>Circling NA northeast of Rwy 16-34.</p>	

AWOS-3P 125.9	ANCHORAGE CENTER 132.2 281.4	NOME RADIO 122.0	CTAF 122.7 0
-------------------------	--	----------------------------	------------------------

CAUTION: GAM aural ident should be monitored to ensure against possible reception of foreign stations.



ELEV 27	TDZE 26
----------------	----------------



CATEGORY	A	B	C	D
S-34	880-1½	854 (900-1½)	880-2½	880-2¾ 854 (900-2¾)
CIRCLING	880-1½	853 (900-1½)	880-2½	880-2¾ 853 (900-2¾)

AK, 27 JAN 2022 to 24 MAR 2022

AK, 27 JAN 2022 to 24 MAR 2022