

WAAS CH <b>86635</b> <b>W16A</b>	APP CRS <b>164°</b>	Rwy Idg TDZE Apt Elev	<b>4500</b> <b>29</b> <b>29</b>
--	------------------------	-----------------------------	---------------------------------------

# RNAV (GPS) RWY 16

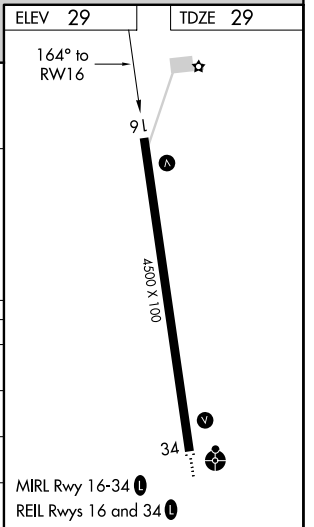
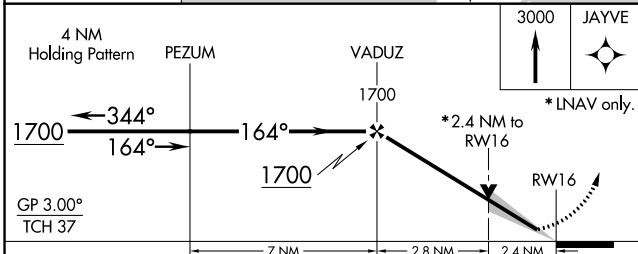
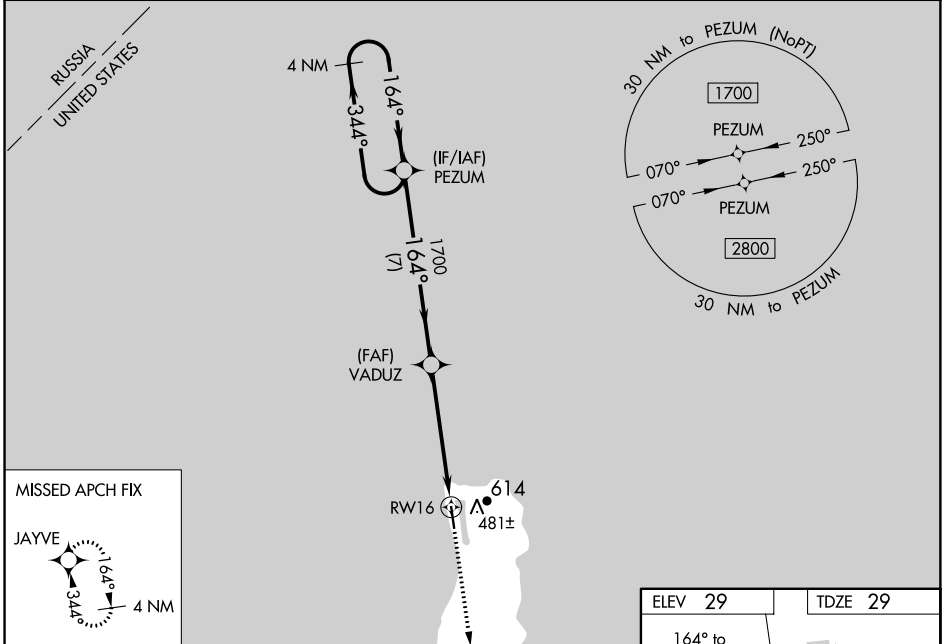
GAMBELL (GAM) (PAGM)

**⚠** Baro-VNAV NA when using Savoonga altimeter setting. For uncompensated Baro-VNAV systems, LNAV/VNAV NA below -20°C (-4°F) or above 54°C (130°F). Circling NA northeast of Rwy 16-34. DME/DME RNP-0.3 NA. VDP NA with Savoonga altimeter setting. When local altimeter setting not received, use Savoonga altimeter setting and increase all DA 82 feet and MDA 100 feet. Increase LPV all Cats visibility ¼ mile. Increase LNAV/VNAV all Cats visibility ⅓ mile. Increase LNAV Cat A visibility ¼ mile. Increase Circling Cat A and C visibility ¼ mile, Cat D visibility ½ mile.

**⚠** -27°C

**MISSED APPROACH:**  
Climb to 3000 direct JAYVE and hold.

AWOS-3P <b>125.9</b>	ANCHORAGE CENTER <b>132.2 281.4</b>	NOME RADIO <b>122.0</b>	CTAF <b>122.7</b> <b>0</b>
-------------------------	--	----------------------------	-------------------------------



CATEGORY	A	B	C	D
LPV DA	279-7/8		250 (300-7/8)	
LNAV/VNAV DA	578-17/8		549 (600-17/8)	
LNAV MDA	820-1 791 (800-1)	820-1 1/4 791 (800-1 1/4)	820-2 1/2	791 (800-2 1/2)
<b>C</b> CIRCLING	820-1 791 (800-1)	820-1 1/4 791 (800-1 1/4)	860-2 1/2	831 (900-2 1/2)

AK, 27 JAN 2022 to 24 MAR 2022

AK, 27 JAN 2022 to 24 MAR 2022