

WAAS CH 82135 W34A	APP CRS 344°	Rwy Idg TDZE Apt Elev	4500 29 29
--	------------------------	-----------------------------	---------------------------------------

RNAV (GPS) RWY 34

GAMBELL (GAM)(PAGM)

⚠ Baro-VNAV and VDP NA when using Savoonga altimeter setting. For uncompensated Baro-VNAV systems, LNAV/VNAV NA below -20°C (-4°F) or above 54°C (130°F).
⚠ Circling NA NE of Rwy 16-34. DME/DME RNP-0.3 NA. When local altimeter setting not received, use Savoonga altimeter setting and increase all DA 82 feet, increase LPV all Cats visibility ¼ mile, and LNAV/VNAV all Cats visibility by 1 mile; increase all MDA 100 feet and LNAV visibility Cat B ¼ mile, Cat C and D ½ mile; increase Circling Cats B and C ¼ mile. For inop ODALS increase LPV all Cats visibility ½ mile. Inop table does not apply to LNAV/VNAV all Cats, and LNAV Cats C and D. When using Savoonga altimeter setting inop table does not apply to LNAV/VNAV all Cats, and LNAV Cats C and D.



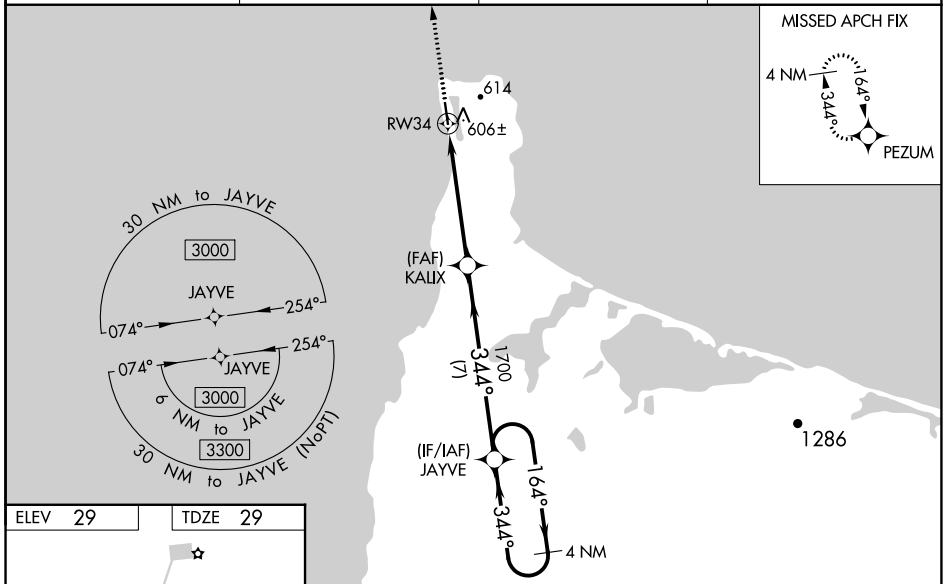
MISSED APPROACH:
Climb to 3000
direct PEZUM
and hold.

AWOS-3P
125.9

ANCHORAGE CENTER
132.2 281.4

NOME RADIO
122.0

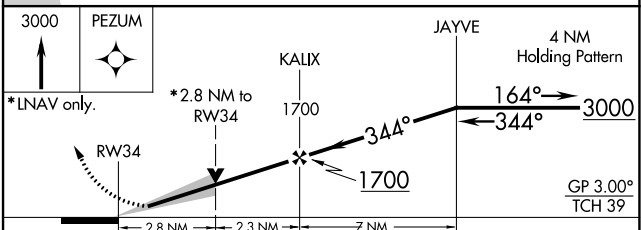
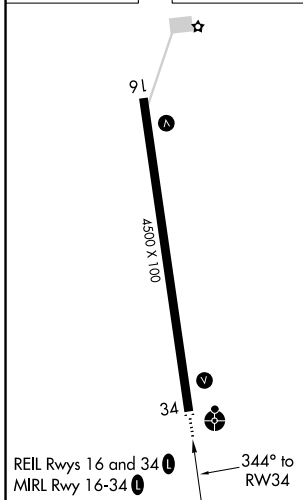
CTAF
122.7 0



AK, 27 JAN 2022 to 24 MAR 2022

AK, 27 JAN 2022 to 24 MAR 2022

ELEV 29	TDZE 29
---------	---------



CATEGORY	A	B	C	D
LPV DA		279-¾	250 (300-¾)	
LNAV/VNAV DA		866-3	837 (900-3)	
LNAV MDA	960-1	931 (1000-1)	960-2½	931 (1000-2½)
C CIRCLING	960-1¼	931 (1000-1¼)	960-2¾ 931 (1000-2¾)	960-3 931 (1000-3)