

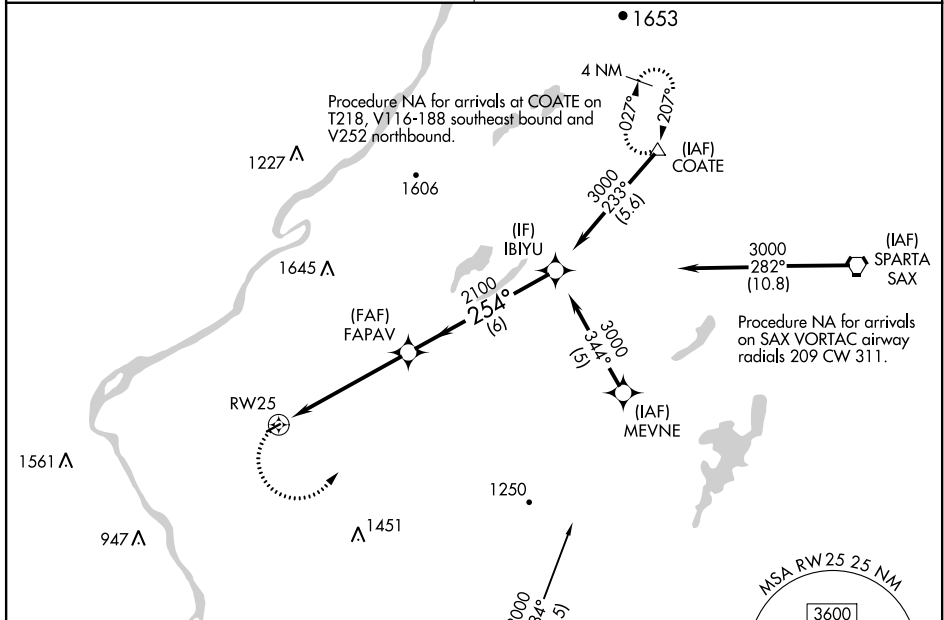
APP CRS 254°	Rwy Idg TDZE Apt Elev	2877 371 372
------------------------	-----------------------------	---

RNAV (GPS) RWY 25

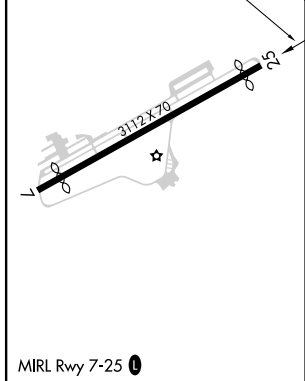
BLAIRSTOWN (1N7)

RNP APCH.	<p>Procedure NA at night. Obtain local altimeter setting on CTAF; when not received, use Lehigh Valley Intl altimeter setting. Rwy 25 helicopter visibility reduction below 1 SM NA.</p>	<p>MISSED APPROACH: Climbing left turn to 3000 direct COATE and hold.</p>
<p>▼ NA</p>		

<p>NEW YORK APP CON 127.6 379.9</p>	<p>UNICOM 123.0 (CTAF)</p>
--	---------------------------------------



ELEV 372	TDZE 371
----------	----------



3000	COATE	Visual Segment- Obstacles.	IBIYU	
	△		FAPAV	3000
	RWY 25		2100	254°
			5.3 NM	6 NM
CATEGORY	A	B	C	D
LNAV MDA	1260-1¼	889 (900-1¼)	NA	
LEHIGH VALLEY INTL ALTIMETER SETTING MINIMUMS				
LNAV MDA	1540-1¼	1540-1½	NA	
	1169 (1200-1¼)	1169 (1200-1½)		

NE-2, 27 JAN 2022 to 24 FEB 2022

NE-2, 27 JAN 2022 to 24 FEB 2022