

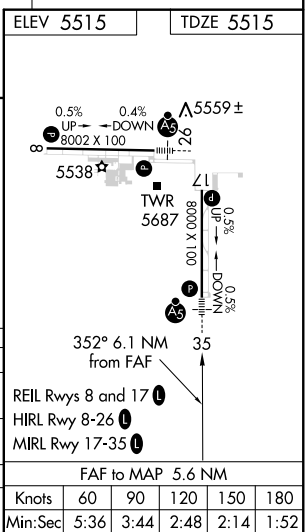
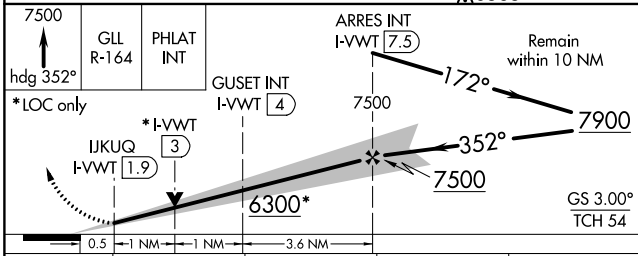
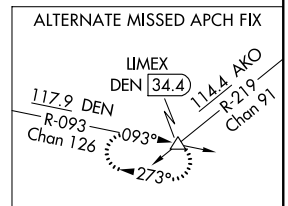
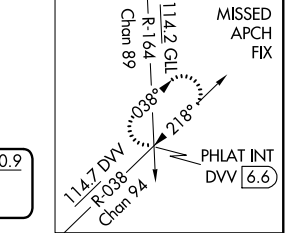
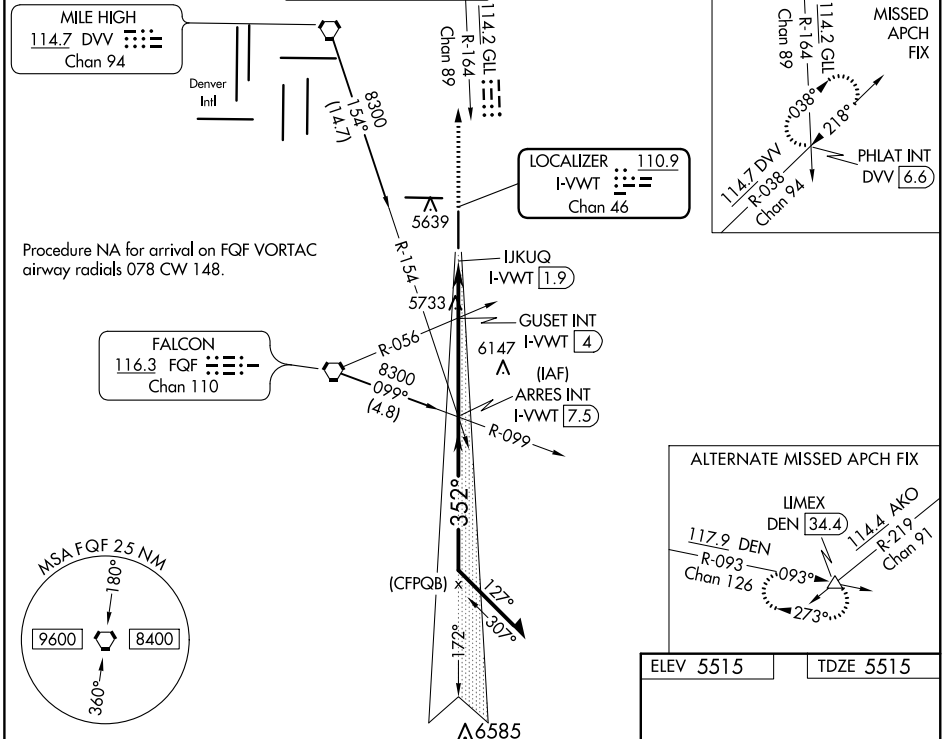
LOC/DME I-VVWT 110.9 Chan 46	APP CRS 352°	Rwy Idg TDZE Apt Elev 8000 5515 5515
---	------------------------	--

ILS or LOC RWY 35

COLORADO AIR AND SPACE PORT (CFO)

▲ For inop ALS, increase S-LOC 35 Cats C and D visibility to 2½ SM.	MALSR 	MISSED APPROACH: Climb to 7500 on heading 352° and on GLL VOR/DME R-164 to PHLAT INT/DVV 6.6 DME and hold.
--	-----------	--

ATIS 119.025	DENVER APP CON 128.25 371.95	SPACE PORT TOWER ★ 120.2 (CTAF) 0	GND CON 124.7	CLNC DEL 124.7	CLNC DEL 121.75 (When twr closed)	UNICOM 122.95
------------------------	--	---	-------------------------	--------------------------	--	-------------------------



CATEGORY	A	B	C	D
S-ILS 35	5715-½ 200 (200-½)			
S-LOC 35	6300-½ 785 (800-½)	6300-¾ 785 (800-¾)	6300-1¾	785 (800-1¾)
GUSET FIX MINIMUMS (DUAL VOR RECEIVERS OR DME REQUIRED)				
S-LOC 35	6040-½	525 (600-½)	6040-1	525 (600-1)

SW-1, 27 JAN 2022 to 24 FEB 2022

SW-1, 27 JAN 2022 to 24 FEB 2022

FAF to MAP 5.6 NM					
Knots	60	90	120	150	180
Min:Sec	5:36	3:44	2:48	2:14	1:52