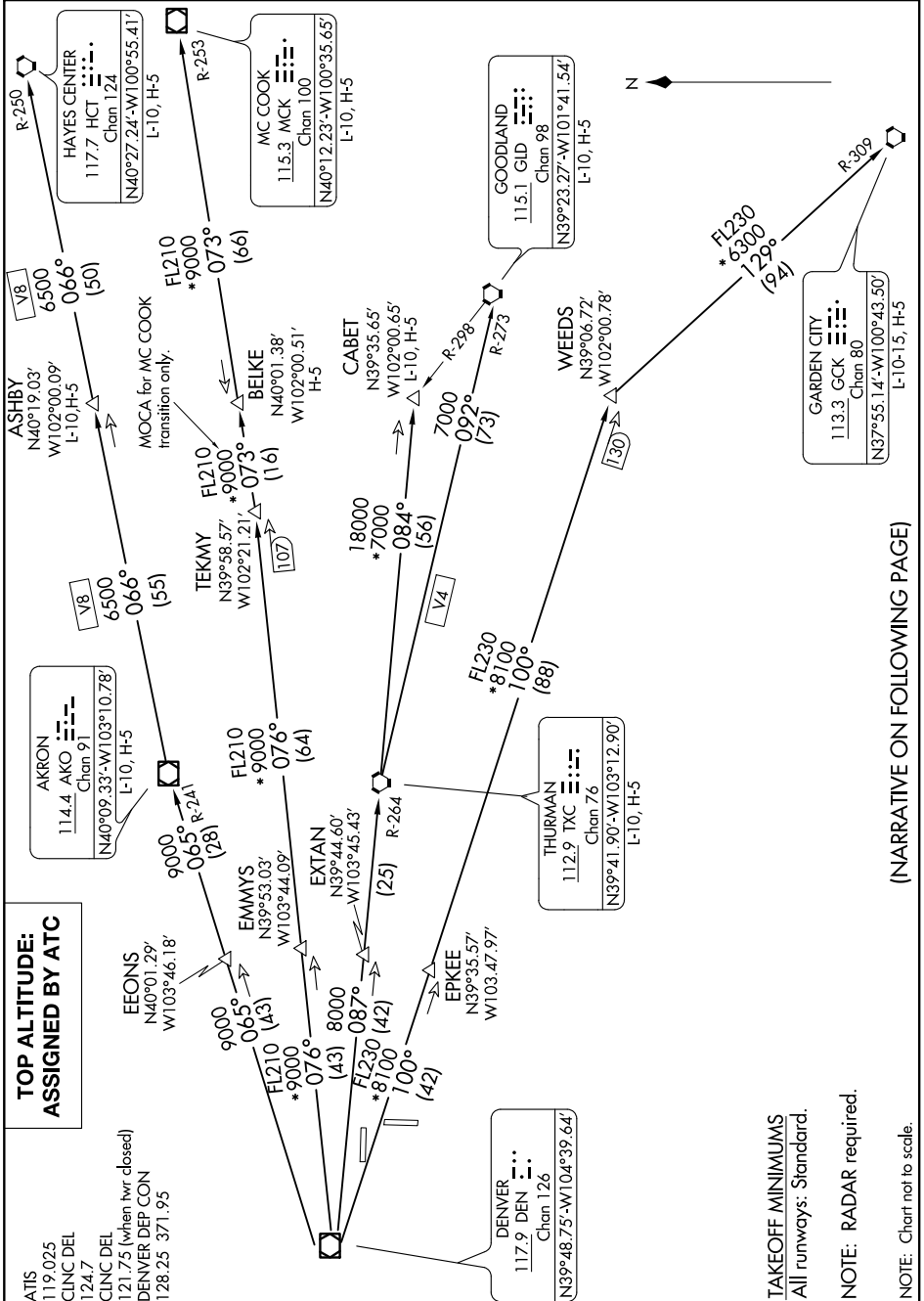


PLAINS ONE DEPARTURE

AL-6851 (FAA)

COLORADO AIR AND SPACE PORT (CFO)
DENVER, COLORADO

SW-1, 27 JAN 2022 to 24 FEB 2022



**TOP ALTITUDE:
ASSIGNED BY ATC**

ATIS 119.025
CLINC DEL 124.7
CLINC DEL 121.75 (when hwr. closed)
DENVER DEP CON 128.25 371.95

TAKEOFF MINIMUMS
All runways: Standard.

NOTE: RADAR required.

NOTE: Chart not to scale.

(NARRATIVE ON FOLLOWING PAGE)

SW-1, 27 JAN 2022 to 24 FEB 2022

PLAINS ONE DEPARTURE

DENVER, COLORADO
COLORADO AIR AND SPACE PORT (CFO)