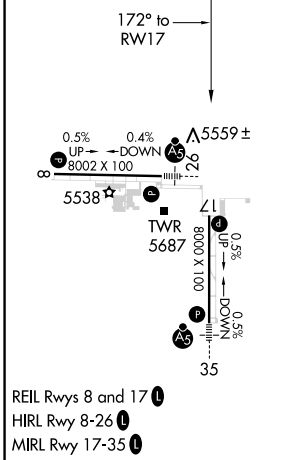
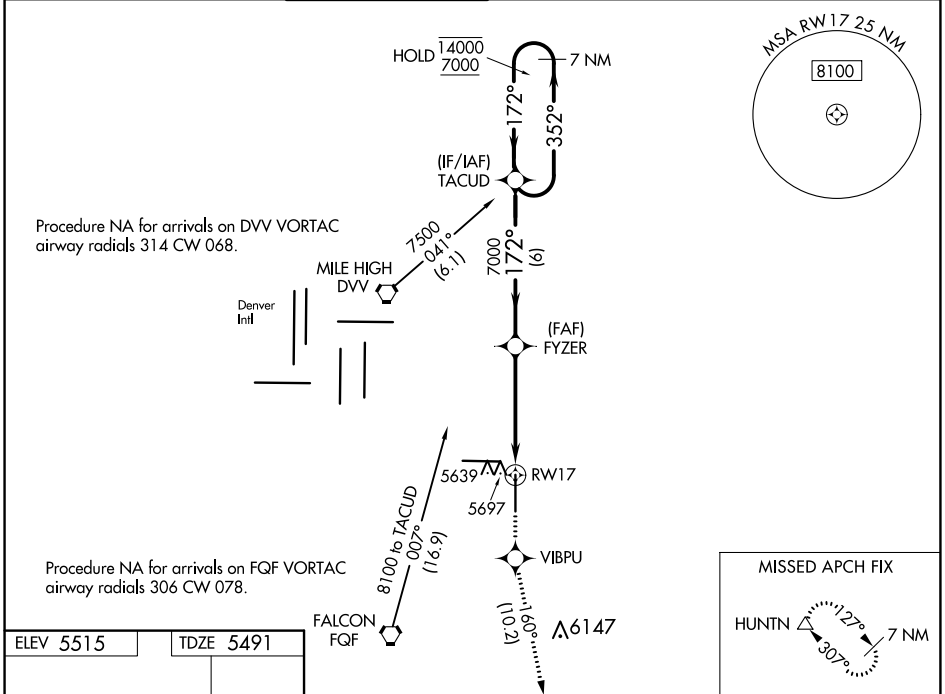


WAAS CH 82209 W17A	APP CRS 172°	Rwy Idg 8000 TDZE 5491 Apt Elev 5515
-------------------------------------	---------------------	---

RNAV (GPS) RWY 17

COLORADO AIR AND SPACE PORT (CFO)

RNP APCH.		MISSED APPROACH: Climb to 8500 direct VIBPU and on track 160° to HUNTN and hold.				
ATIS 119.025	DENVER APP CON 128.25 371.95	SPACE PORT TOWER* 120.2 (CTAF) 0	GND CON 124.7	CLNC DEL 124.7	CLNC DEL 121.75 (When twr closed)	UNICOM 122.95



7 NM Holding Pattern	TACUD	FYZER	8500	VIBPU	tr 160°	HUNTN
14000 7000	← 352° 172° →	172° 7000	↑	✧	△	△
GP 3.00° TCH 55				* 1.5 NM to RWY 17		* LNAV only
	6 NM	3.1 NM	1.5 NM			
CATEGORY	A	B	C	D		
LPV DA		5691- ³ / ₄	200 (200- ³ / ₄)			
LNAV/VNAV DA		5916-1 ³ / ₈	425 (500-1 ³ / ₈)			
LNAV MDA	6000-1	509 (500-1)	6000-1 ¹ / ₂	509 (500-1 ¹ / ₂)		
CIRCLING	6000-1	485 (500-1)	6100-1 ¹ / ₂ 585 (600-1 ¹ / ₂)	6300-2 ¹ / ₂ 785 (800-2 ¹ / ₂)		

SW-1, 27 JAN 2022 to 24 FEB 2022

SW-1, 27 JAN 2022 to 24 FEB 2022