

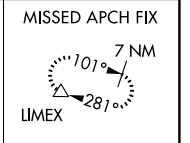
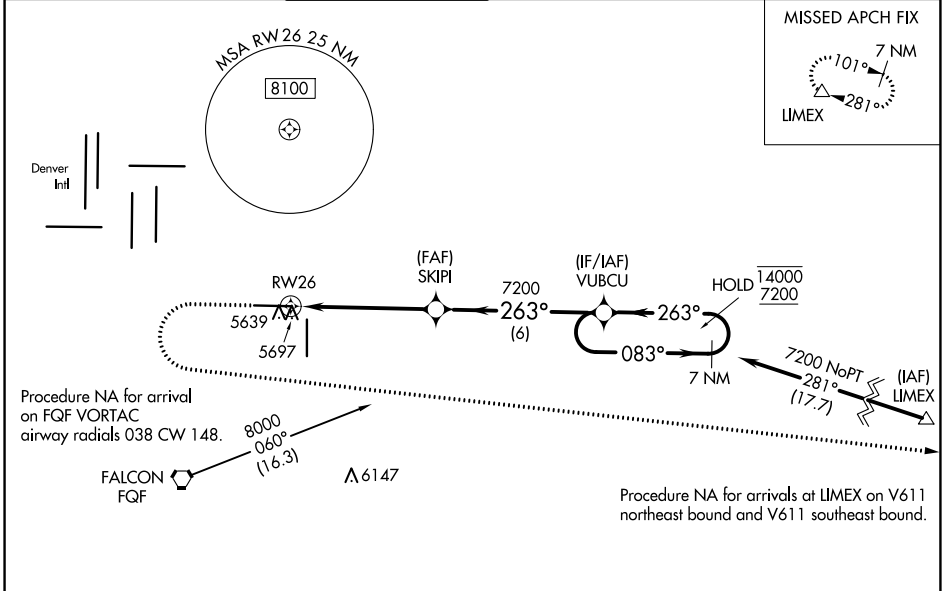
WAAS CH 93909 W26A	APP CRS 263°	Rwy Idg TDZE Apt Elev	8002 5489 5515
--	------------------------	-----------------------------	---

RNAV (GPS) RWY 26

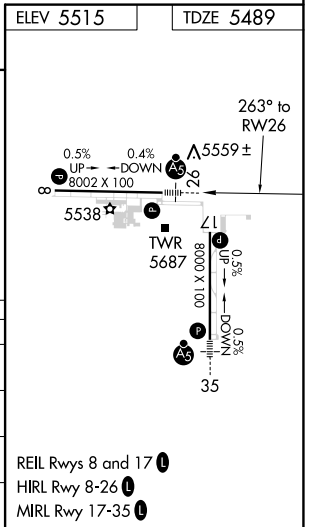
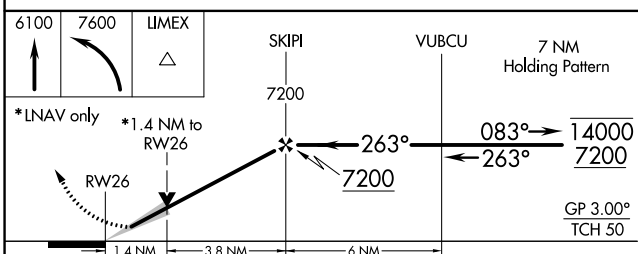
COLORADO AIR AND SPACE PORT (CFO)

RNP APCH.	MALSRL	MISSED APPROACH: (Do not exceed 200K until LIMEX) Climb to 6100 then climbing left turn to 7600 direct LIMEX and hold.
<p>▼ For uncompensated Baro-VNAV systems, LNAV/VNAV NA below -25°C or above 48°C. For inop ALS, increase LNAV/VNAV all Cats visibility to 1½ SM, and increase LNAV Cat C/D visibility to 1½ SM.</p>		

ATIS 119.025	DENVER APP CON 128.25 371.95	SPACE PORT TOWER * 120.2 (CTAF) 0	GND CON 124.7	CLNC DEL 124.7	CLNC DEL 121.75 (When twr closed)	UNICOM 122.95
------------------------	--	---	-------------------------	--------------------------	--	-------------------------



△ 6270±



CATEGORY	A	B	C	D
LPV DA		5689-½	200 (200-½)	
LNAV/VNAV DA		5858-¾	369 (400-¾)	
LNAV MDA	5960-½	471 (500-½)	5960-1	471 (500-1)
C CIRCLING	6000-1	485 (500-1)	6100-1½ 585 (600-1½)	6300-2½ 785 (800-2½)

REIL Rwy 8 and 17 **0**

HIRL Rwy 8-26 **0**

MIRL Rwy 17-35 **0**

SW-1, 27 JAN 2022 to 24 FEB 2022

SW-1, 27 JAN 2022 to 24 FEB 2022