

# ROCKIES FIVE DEPARTURE

AL-6851 (FAA)

COLORADO AIR AND SPACE PORT (CFO)  
DENVER, COLORADO

**TOP ALTITUDE:  
ASSIGNED BY ATC**

ATIS  
119.025  
CLNC DEL  
124.7

DENVER CLNC DEL  
121.75 (When tower closed)  
DENVER DEP CON  
128.25 371.95



**KREMNING**  
113.8 RLG  
Chan 85  
N40°00.16'-W106°26.55'  
L-9, H-3

**MEEKER**  
115.2 EKR  
Chan 99  
N40°04.05'-W107°55.50'  
L-9, H-3

**RIFLE**  
110.6 RIL  
Chan 43  
N39°31.70'-W107°43.18'

**RED TABLE**  
113.0 DBL  
Chan 77  
N39°26.36'-W106°53.68'  
L-9, H-3

**DOVE CREEK**  
114.6 DVC  
Chan 93  
N37°48.52'-W108°55.88'  
L-9, H-3

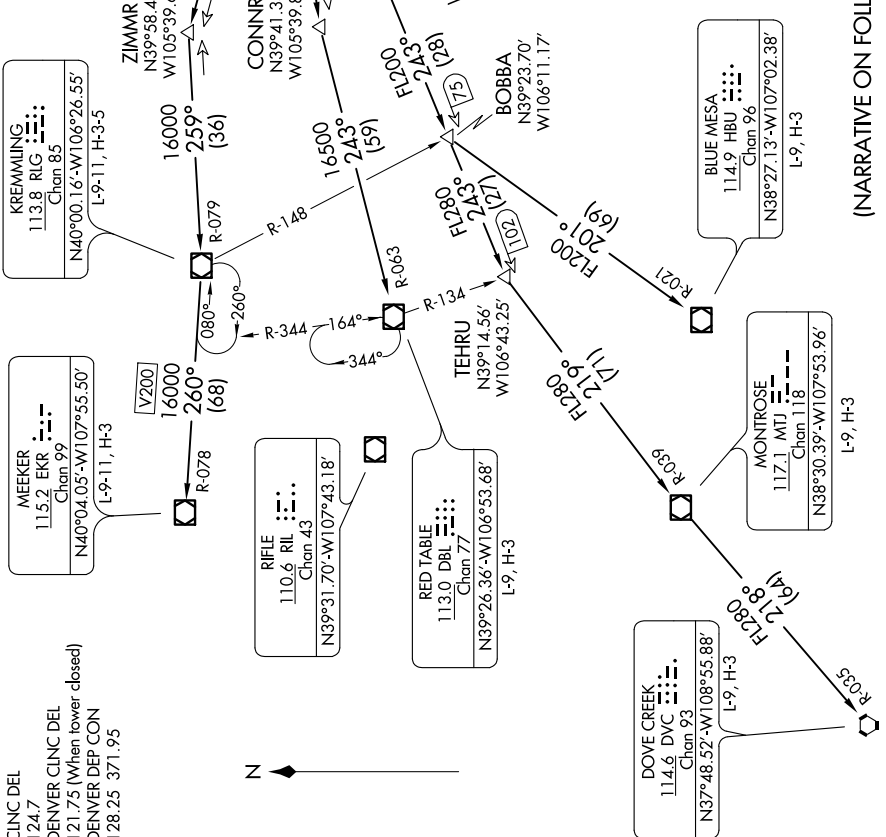
**MONTROSE**  
117.1 MTJ  
Chan 118  
N38°30.39'-W107°53.96'  
L-9, H-3

**BLUE MESA**  
114.9 HBU  
Chan 96  
N38°27.13'-W107°02.38'  
L-9, H-3

**BOBBA**  
N39°23.70'  
W106°11.17'

**BAYLR**  
N39°33.20'  
W105°37.10'

**DENVER**  
117.9 DEN  
Chan 126  
N39°48.75'-W104°39.64'



**TAKEOFF MINIMUMS**  
All Runways: Standard.

**NOTE:** RADAR required.

**NOTE:** Chart not to scale.

(NARRATIVE ON FOLLOWING PAGE)

SW-1, 27 JAN 2022 to 24 FEB 2022

SW-1, 27 JAN 2022 to 24 FEB 2022

# ROCKIES FIVE DEPARTURE