

APP CRS 234°	Rwy Idg 3058
	TDZE 892
	Apt Elev 892

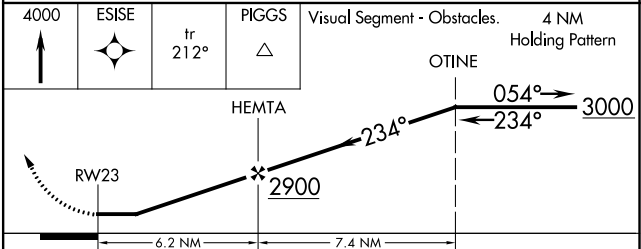
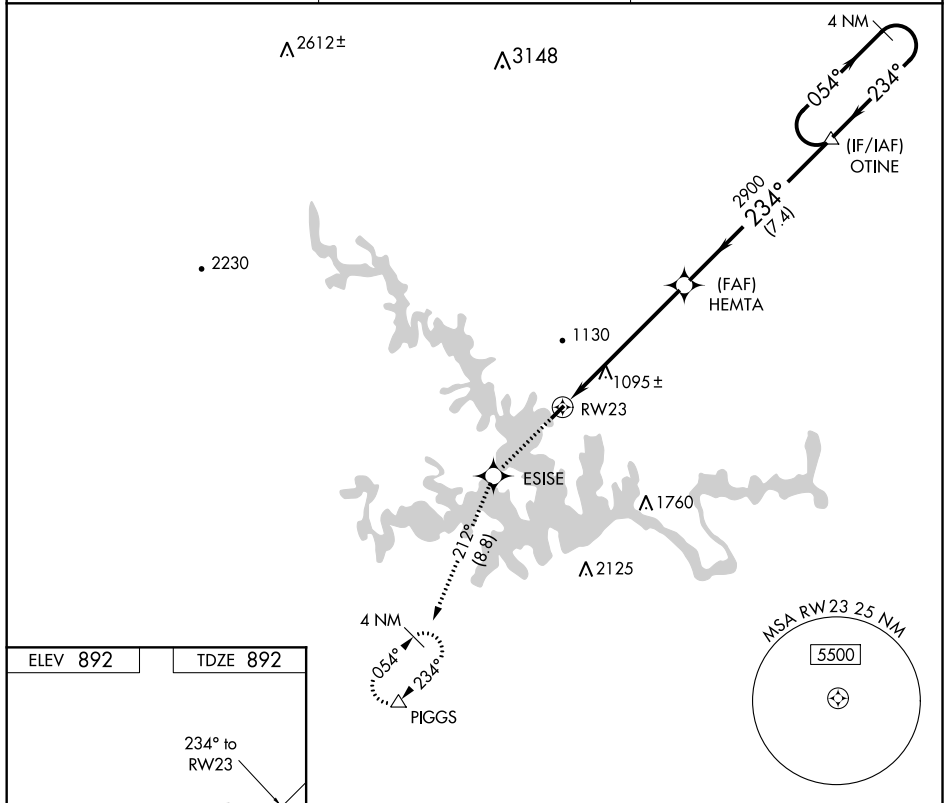
RNAV (GPS) RWY 23

SMITH MOUNTAIN LAKE (W91)

∇ DME/DME RNP-0.3 NA. Use Lynchburg altimeter setting; when not received, use Roanoke altimeter setting and increase all MDA 40 feet. Procedure NA at night. Helicopter visibility reduction below 1 SM NA.

▲ NA MISSED APPROACH: Climb to 4000 direct ESISE and on track 212° to PIGGS and hold.

LYN ASOS 119.8	ROANOKE APP CON 135.0 254.325	UNICOM 122.975 (CTAF)
--------------------------	---	---------------------------------



CATEGORY	A	B	C	D
LNAV MDA	1900-3	1008 (1100-3)	NA	
CIRCLING	1900-3	1008 (1100-3)	NA	

NE-3, 27 JAN 2022 to 24 FEB 2022

NE-3, 27 JAN 2022 to 24 FEB 2022