

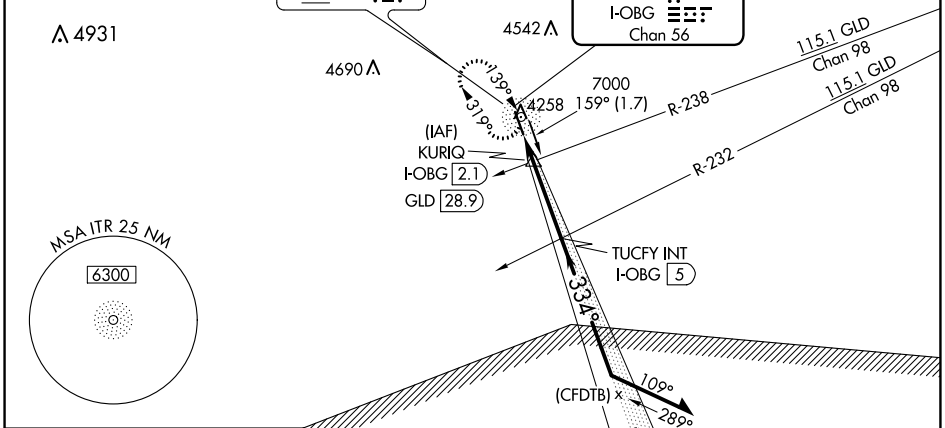
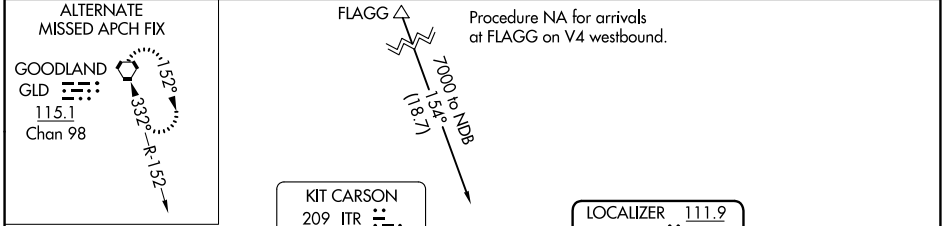
LOC/DME I-OBG 111.9 Chan 56	APP CRS 334°	Rwy Idg TDZE Apt Elev	5199 4205 4218
------------------------------------------	------------------------	-----------------------------	-------------------------------------------

LOC RWY 33

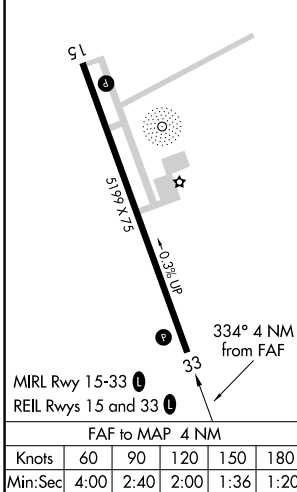
KIT CARSON COUNTY (ITR)

ADF required. MISSED APPROACH: Climb to 7000 direct ITR NDB and hold, continue climb-in-hold to 7000.

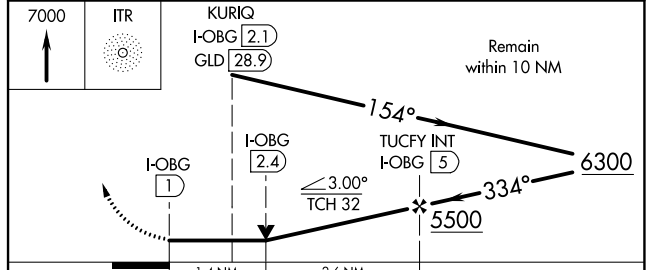
ASOS 135.225	DENVER CENTER 132.7 226.675	UNICOM 122.8 (CTAF)
------------------------	---------------------------------------	-------------------------------



ELEV 4218 TDZE 4205



ADF or DME REQUIRED



CATEGORY	A	B	C	D
S-33	4680-1 475 (500-1)		4680-1 $\frac{3}{8}$ 475 (500-1 $\frac{3}{8}$)	
C CIRCLING	4680-1 462 (500-1)		4860-1 $\frac{3}{4}$ 642 (700-1 $\frac{3}{4}$)	4860-2 642 (700-2)

SW-1, 27 JAN 2022 to 24 FEB 2022

SW-1, 27 JAN 2022 to 24 FEB 2022