

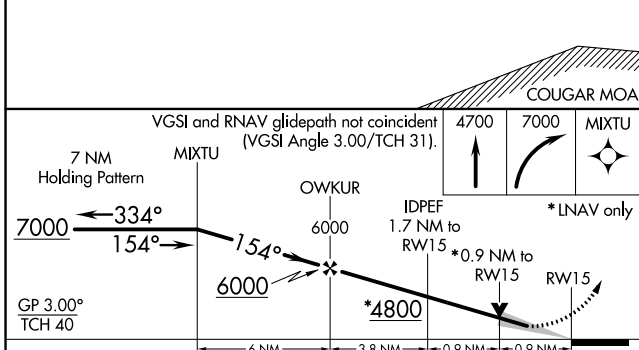
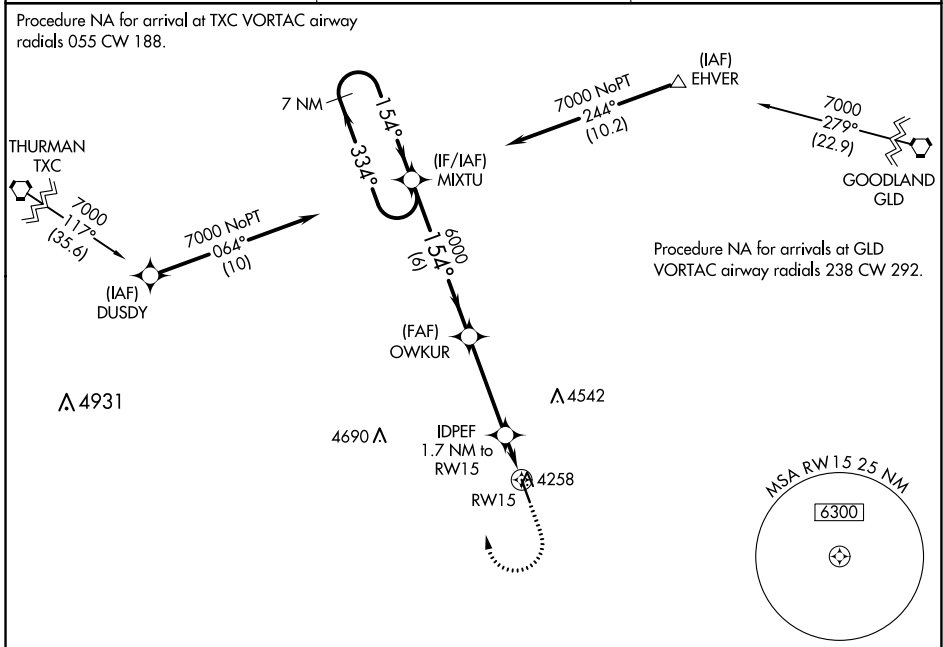
WAAS CH <b>72999</b> <b>W15A</b>	APP CRS <b>154°</b>	Rwy Idg <b>5199</b> TDZE <b>4218</b> Apt Elev <b>4218</b>
--	------------------------	---

# RNAV (GPS) RWY 15

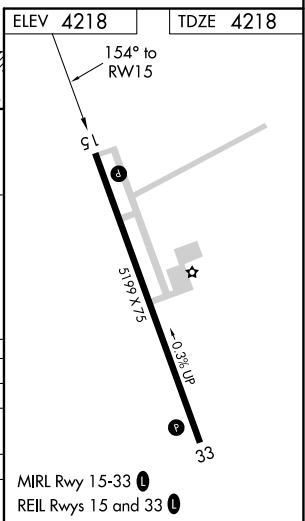
KIT CARSON COUNTY (ITR)

**⚠** For uncompensated Baro-VNAV systems, LNAV/VNAV NA below -22°C (-7°F) or above 53°C (127°F). DME/DME RNP-0.3 NA. MISSED APPROACH: Climb to 4700 then climbing right turn to 7000 direct MIXTU and hold.

ASOS <b>135.225</b>	DENVER CENTER <b>132.7 226.675</b>	UNICOM <b>122.8 (CTAF) 0</b>
------------------------	---------------------------------------	---------------------------------



CATEGORY	A	B	C	D
LPV DA		4468-1	250 (300-1)	
LNAV/VNAV DA		4468-1	250 (300-1)	
LNAV MDA		4520-1	302 (400-1)	
<b>C</b> CIRCLING	4580-1 362 (400-1)	4680-1 462 (500-1)	4860-1 <sup>3</sup> / <sub>4</sub> 642 (700-1 <sup>3</sup> / <sub>4</sub> )	4860-2 642 (700-2)



SW-1, 27 JAN 2022 to 24 FEB 2022

SW-1, 27 JAN 2022 to 24 FEB 2022