

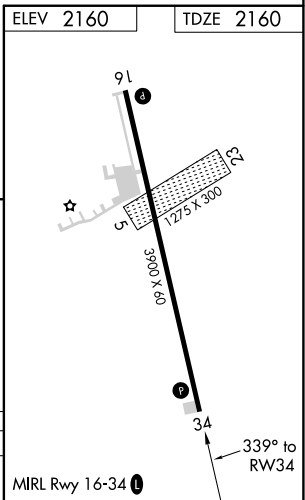
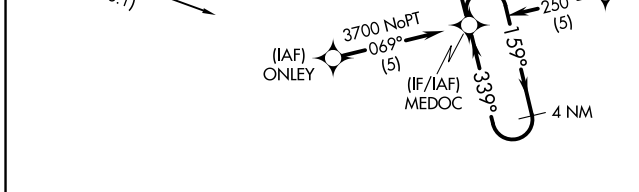
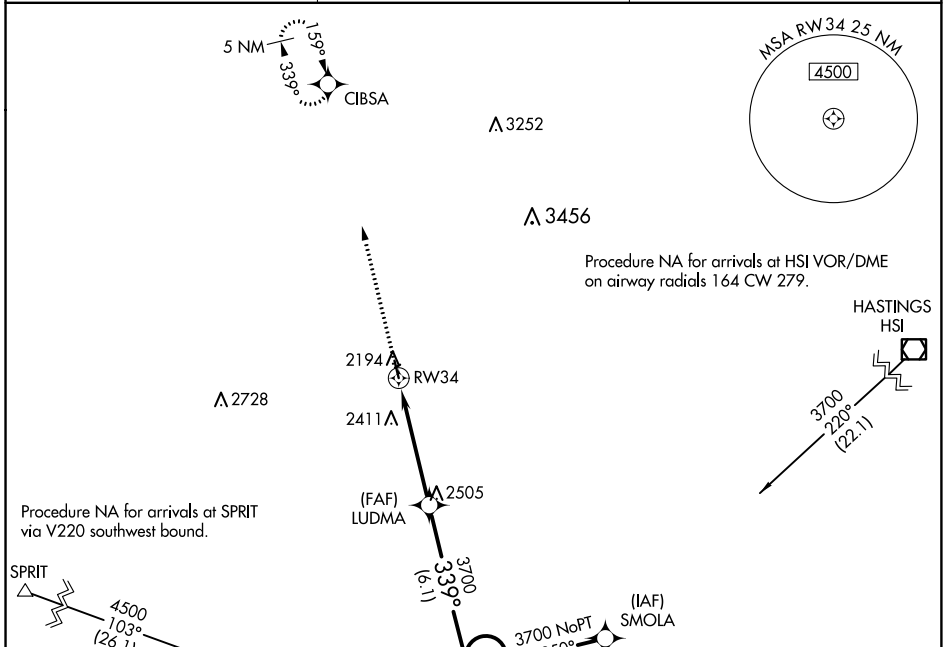
APP CRS	Rwy Idg	3900
339°	TDZE	2160
	Apt Elev	2160

RNAV (GPS) RWY 34

PIONEER VILLAGE FLD (ØV3)

RNP APCH.	RWY 34 helicopter visibility reduction below 3/4 SM NA. Use Kearney altimeter setting; when not received, use Holdrege altimeter setting and increase all MDA 40 feet.	MISSED APPROACH: Climb to 4300 direct CIBSA and hold.
⚠ NA		

EAR AWOS-3PT 123.875	MINNEAPOLIS CENTER 119.4 278.8	UNICOM 122.7 (CTAF) 0
--------------------------------	--	---------------------------------



4300	CIBSA	VGS1 and descent angles not coincident (VGS1 Angle 3.50/TCH 40).	
↑	✦	LUDMA	MEDOC
RW34		3700	3700
3.04° TCH 40		339°	159°
4.7 NM		6.1 NM	

CATEGORY	A	B	C	D
LNAV MDA	2700-1	540 (600-1)	NA	

NC-2, 27 JAN 2022 to 24 FEB 2022

NC-2, 27 JAN 2022 to 24 FEB 2022