

LOC/DME I-HWG 110.7 Chan 44	APP CRS 120°	Rwy Idg TDZE Apt Elev	4199 2189 2205
---	------------------------	-----------------------------	---

ILS or LOC RWY 12L

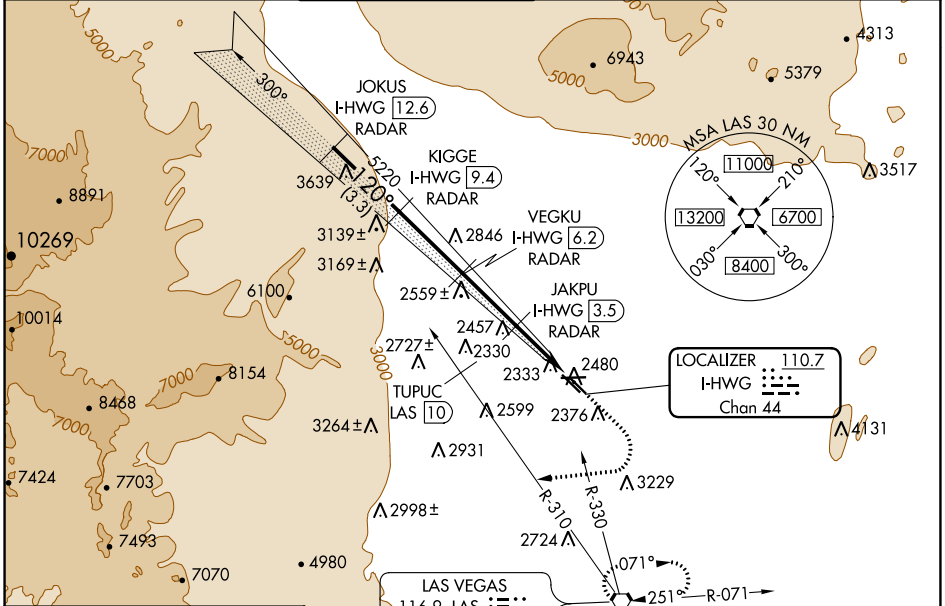
NORTH LAS VEGAS (VGT)

DME and RADAR required.

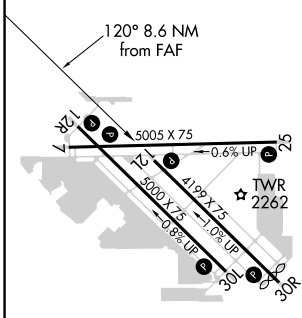
⚠ When local altimeter setting not received, use Harry Reid Intl altimeter setting and increase DA to 2478, and visibility Cats A/B ¼ mile; increase all MDA 40 feet. Rwy 12L helicopter visibility reduction below ¾ SM NA.

MISSED APPROACH: Climb to 2600, then climbing right turn heading 250° to 6000, intercept LAS R-310 outbound to TUPUC/LAS 10 DME then turn right via LAS R-330 inbound to LAS VORTAC and hold.

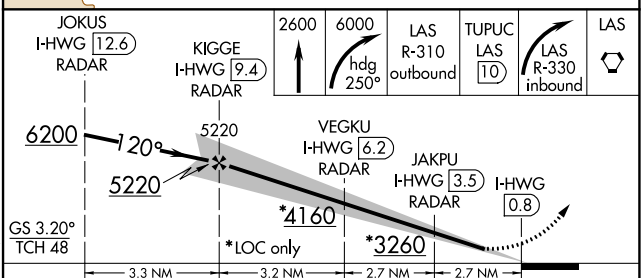
ATIS 118.05	LAS VEGAS APP CON 119.4 360.85	NORTH LAS VEGAS TOWER* 125.7 (CTAF) 360.75	GND CON 121.7	CLNC DEL 124.0	UNICOM 122.95
-----------------------	--	--	-------------------------	--------------------------	-------------------------



ELEV 2205	D	TDZE 2189
-----------	----------	-----------



REIL all Rws Ⓛ					
MIRL all Rws Ⓛ					
FAF to MAP 8.6 NM					
Knots	60	90	120	150	180
Min:Sec	8:36	5:44	4:18	3:26	2:52



CATEGORY	A	B	C	D
S-ILS 12L	2456-1	267 (300-1)		NA
S-LOC 12L	2620-1	431 (500-1)		NA
C CIRCLING	2720-1	515 (600-1)		NA

SW-4, 27 JAN 2022 to 24 FEB 2022

SW-4, 27 JAN 2022 to 24 FEB 2022