

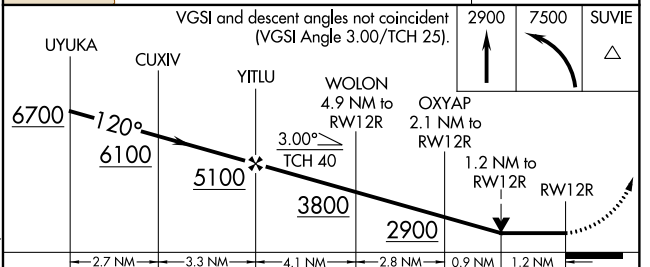
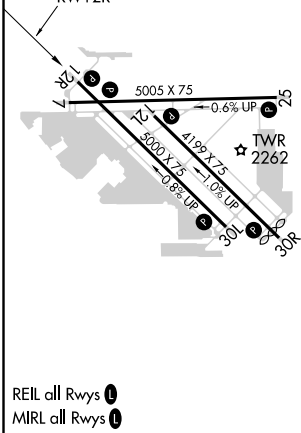
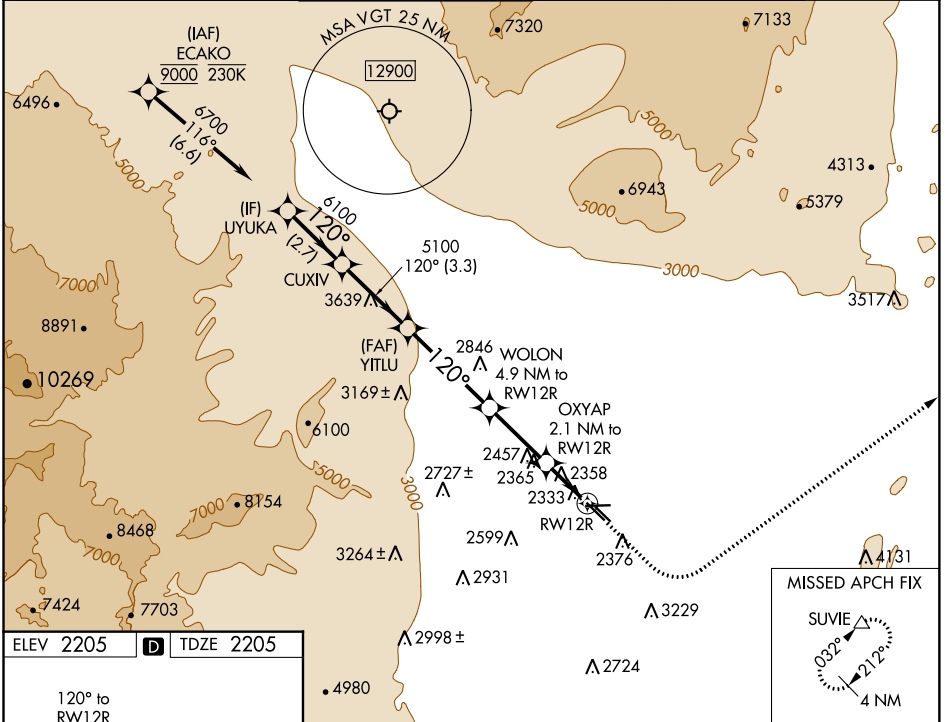
WAAS CH 69443 W12A	APP CRS 120°	Rwy Idg TDZE Apt Elev	5000 2205 2205
--	------------------------	-----------------------------	---

RNAV (GPS) RWY 12R

NORTH LAS VEGAS (VGT)

RNP APCH.	MISSED APPROACH: Climb to 2900 then climbing left turn to 7500 direct SUVIE and hold, continue climb-in-hold to 7500.
Rwy 12R helicopter visibility reduction below 3/4 SM NA.	

ATIS 118.05	LAS VEGAS APP CON 119.4 360.85	NORTH LAS VEGAS TOWER * 125.7 (CTAF) 360.75	GND CON 121.7	CLNC DEL 124.0	UNICOM 122.95
-----------------------	--	---	-------------------------	--------------------------	-------------------------



CATEGORY	A	B	C	D
LP MDA	2620-1	415 (500-1)	2620-1 1/8	415 (500-1 1/8)
LNAV MDA	2820-1	615 (700-1)	2840-1 3/4	615 (700-1 3/4)
C CIRCLING	2820-1	615 (700-1)	2840-1 3/4 635 (700-1 3/4)	3540-3 1335 (1400-3)

SW-4, 27 JAN 2022 to 24 FEB 2022

SW-4, 27 JAN 2022 to 24 FEB 2022